

GRADUATE OUTPUT

Table 1: GRADUATE OUTPUT BY DISCIPLINE

DISCIPLINE	2000/2001		2001/2002		2002/2003		2003/2004		2005/2006		2006/2007		2007/2008	
	M	F	M	F	M	F	M	F	M	F	M	F	M	F
Agriculture	133	147	139	161	143	154	180	112	223	127	222	124	295	167
Engineering	-	-	-	-	-	-	-	-	-	-	28	3	29	6
Environmental Sciences	96	35	91	42	86	49	74	47	92	57	111	45	129	40
Sciences	196	87	176	81	185	102	163	169	205	169	237	252	270	210
Vet. Medicine	-	-	-	-	-	-	-	-	-	-	-	-	13	1
TOTAL	425	269	406	284	414	305	417	328	520	353	598	424	736	424
GRAND TOTAL	694		690		719		745		873		1022		1160	

Table 2: Graduate Output by Gender and Class of Degree (2007/2008)

COLLEGE	First Class		Second Class Upper		Second Class Lower		Third Class		Pass		TOTAL	
	M	F	M	F	M	F	M	F	M	F	M	F
COLAMRUCS												
Agricultural Economics and Farm Management	2	0	16	18	28	15	9	6	2	4	57	43
Agricultural Extension and Rural Development	0	0	5	1	16	9	4	2	1	0	26	12
Food Science and Technology	1	0	3	12	8	14	1	2	2	0	15	28
Home Science and Management	0	0	1	7	8	20	1	9	2	2	12	38
Nutrition and Dietetics	0	0	2	19	5	24	2	2	0	0	9	45
Total	3	0	27	57	65	82	17	21	7	6	119	166
COLANIM											0	0
Animal Breeding and Genetics	1	0	9	4	19	10	5	0	0	0	34	14
Animal Nutrition	2	0	6	9	18	6	2	4	1	0	29	19
Animal Physiology											0	0
Animal Production	2	1	15	9	20	10	9	2	4	0	50	22

and Health												
Pasture and Range Management	0	0	3	0	7	5	3	2	1	0	14	7
Total	5	1	33	22	64	31	19	8	6	0	127	62
COLENG											0	0
Agricultural Engineering	0	0	1	0	4	0	1	1	0	0	6	1
Civil Engineering	0	0	3	0	4	2	0	0	0	0	7	2
Electrical Engineering	1	1	5	2	2	0	0	0	0	0	8	3
Mechanical Engineering	0	0	5	0	3	0	1	0	0	0	9	0
Total	1	1	14	2	13	2	2	1	0	0	30	6
COLERM											0	0
Aquaculture and Fisheries Management	2	0	10	0	16	10	2	0	1	0	31	10
Environmental Management and Toxicology	1	1	15	6	20	3	1	8	0	0	37	18
Forestry and Wildlife Management	0	0	14	8	14	1	3	1	0	0	31	10
Water Resources Management	0	0	9	0	14	3	4	0	1	0	28	3
Total	3	1	48	14	64	17	10	9	2	0	127	41
COLNAS											0	0
Biochemistry	0	0	0	5	6	8	2	4	2	0	10	17
Biological Sciences	0	0	2	2	14	6	7	3	3	1	26	12
Chemistry	0	1	5	2	11	1	1	0	1	2	18	6
Computer Sciences	0	0	12	2	43	20	10	2	4	0	69	24
Mathematics	2	0	2	0	5	1	0	0	1	0	10	1
Microbiology	0	0	7	8	14	19	2	5	0	0	23	32
Physics	0	0	7	0	22	1	7	1	3	1	39	3
Statistics	0	0	8	1	16	5	4	2	4	0	32	8
Total	2	1	43	20	131	61	33	17	18	4	227	103
COLPLANT											0	0
Crop Protection	0	0	4	5	9	4	4	1	0	0	17	10
Horticulture	0	0	2	2	11	6	4	1	0	0	17	9
Plant Breeding and Seed Technology	0	0	4	3	8	8	4	1	0	0	16	12
Plant Physiology and Crop	0	0	6	2	4	4	2	0	0	0	12	6

Production													
Soil Science and Land Management	0	1	9	5	11	3	4	2	1	0	25	11	
Total	0	1	25	17	43	25	18	5	1	0	87	48	
COLVET	UNCLASSIFIED										13	1	
	14	5	190	132	380	218	99	61	34	10	736	424	
GRAND TOTAL	19		322		598		160		44		1160		

Figure 1: UNAAB Graduate Output 2007/2008

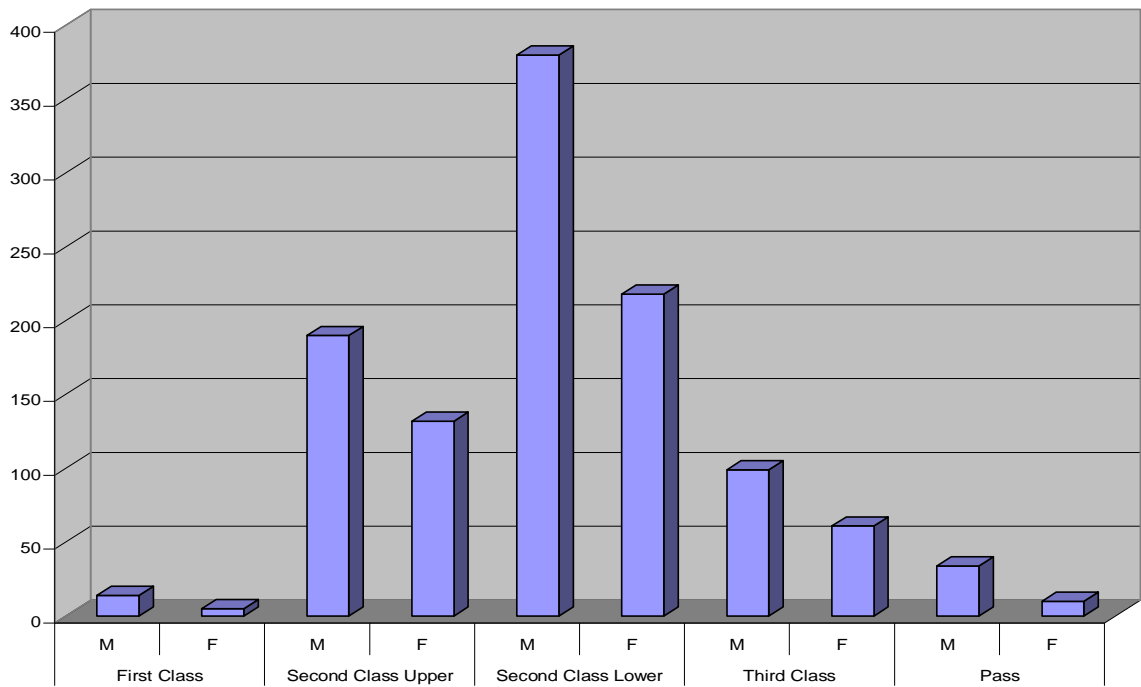


Figure1

