

1. Which of the following components is not part of the male reproductive system?
 a. Ovary b. Testis c. Ductus deferens d. Ampulla e. Prostate
2. The testis produces spermatozoa and:
 a. Oestrogen b. Progesterone c. Ova
 d. Testosterone e. Embryo
- 3-7. Identify the following parts of the bull reproductive system:

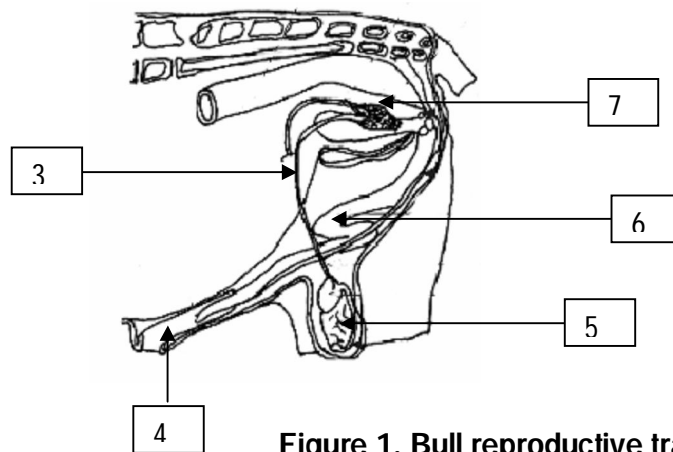


Figure 1. Bull reproductive tract

8. Which of the following is not a function of the mammalian ovary?
 a. Progesterone production b. Testosterone production c. Production of ova
 d. Oestrogen production e. None of the above
9. The copulatory organ in the female mammal is the:
 a. Cervix b. Vulva
 c. Uterus d. Vagina e. Oviduct

10-12. Label the parts of the oviduct shown in Figure 2.

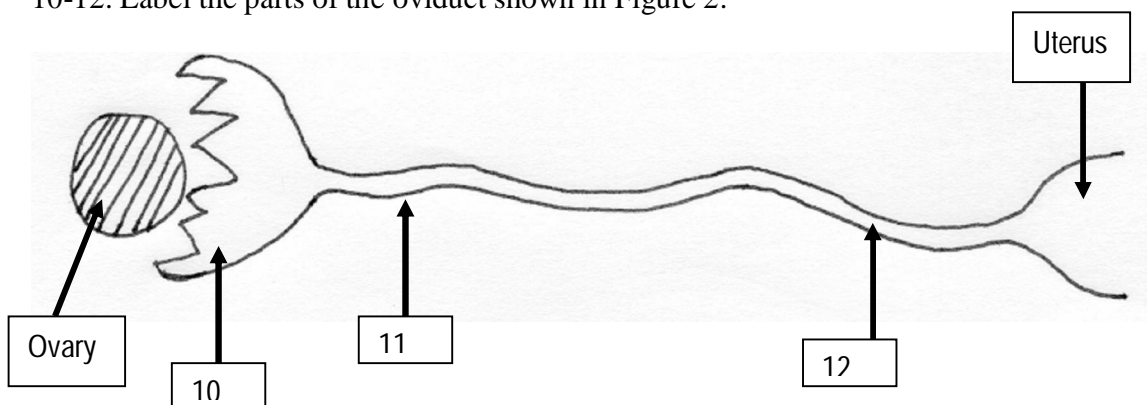


Figure 2. Oviduct

12-14. List 3 functions of the mammalian uterus:

- 12.
- 13.
- 14.

15-17. The 3 embryonic cell layers from which tissues arise in mammalian development are:

- 15.
- 16.
- 17.

18. Which of the following sequence is the correct order of tissue growth?

- a. Central Nervous System, Bones, Tendons, Muscles, Fat
- b. Bones, Central Nervous System, Tendons, Fat, Muscles
- c. Tendons, Fat, Bones, Central Nervous System, Muscles
- d. Bones, Central Nervous System, Tendons, Muscles, Fat
- e. Muscles, Bones, Central Nervous System, Tendons, Fat

19. Intact males heavier and leaner at a given age than castrates and females.
True or False?

20. The correct order of fat deposition is:

- a. Abdominal, Intramuscular, Subcutaneous, Intermuscular
- b. Intermuscular, Subcutaneous, Abdominal, Intramuscular
- c. Subcutaneous, Abdominal, Intramuscular, Intermuscular
- d. Intramuscular, Subcutaneous, Intramuscular, Abdominal
- e. Abdominal, Intermuscular, Subcutaneous, Intramuscular