



**UNIVERSITY OF AGRICULTURE,
ABEOKUTA, OGUN STATE, NIGERIA**

STATISTICAL DIGEST

AND REPORTS

DECEMBER, 2009

Published by

ACADEMIC PLANNING UNIT

Vice-Chancellor's Office

Overview

This production is the third edition of the University's Statistical Digest and Reports. It is an improvement over the second edition. It contains institutional information and highlights some gender aspects of the University statistics. Besides presentation of analysed 2009 data on staff and students, accreditation status of our undergraduate academic programmes are highlighted.

I hope the various Departments and Units within the University would find the information contained in this edition useful in their Planning and decision making processes.

Professor K.A. Okeleye

Director, Academic Planning Unit,

UNAAB, Abeokuta.

Table of Contents

Overview	ii
Table of Contents	iii
Introduction	1
Academic Programmes	3
Students' Enrolment	9
Full-Time Equivalent for Students and Carrying Capacity	19
Teacher- Student Ratio	21
Graduate Output	21
Staff	26

List of Tables

Table		Pages
1	Institutional Information as at Novemberr, 2009	2
2	Undergraduate Programmes as at 2008/2009 Academic Session .	3
3	Postgraduate Programmes as at 2008/2009 Academic Session . .	5
4	Summary of Academic Programmes as at 2008/2009 Academic Session .	9
5	Admitted Students by Discipline	9
6	Students' Enrolment by Discipline	10
7	Students Enrolment by Mode- 2008/2009	10
8	New Entrant Distribution by State Of Origin and Sex (2008/2009 Undergraduates)	12
9	Postgraduate Fresh Enrolment 2008/2009	18
10	Carrying Capacity for 2008/2009	19
11	Teacher/Students Ratio (TSR) By Discipline as At October, 2008 . .	21
12	Graduate Output by Discipline	21
13	Graduate Output by Gender and Class of Degree -2008/2009 . .	22
14	Academic Staff by Faculty / Department, Sex and Cadre as At Oct. 2009 .	26
15	UNAAB Non-Teaching Staff by Sex and Cadre as At October 2009 .	30
16	Names and Areas of Specialization of Professors and Readers (October, 2009)	36
17	UNAAB Staff Profile as at October, 2009	44

List of Figures

Figure	Pages
1 UNAAB Undergraduate Students' Growth Rate (1988-2009). .	11
2 Undergraduate Students' Enrolment by Department – 2008/2009 .	11
3 UNAAB Graduate Output – 2007/2008	24
4 First Class Graduates Since Inception	25
5 UNAAB Academic Staff Profile by Cadre - October, 2009 . .	31
6 UNAAB Academic Staff by Category-October, 2009 . .	32
7 % Pyramidal Structure of UNAAB Academic Staff –October, 2009	33
8 % Pyramidal Structure of Senior Non-Teaching Staff –October, 2009	33
9 % Pyramidal Structure of Non-Teaching Staff –October, 2009 .	35

INTRODUCTION

The second edition of the Statistical Digest and Reports was published in 2008 and it contained the status of programmes run in the University, students and staff analysis and some other information that has become useful to all stakeholders.

The last one year has witnessed changes in some of the information given in the publication that needs to be put in proper perspectives. Three (3) programmes namely: Environmental Management and Toxicology (EMT), Water Resources Management and Agricultural Meteorology Nutrition and Dietetics were visited and given full accreditation status by the National Universities Commission (NUC). Programmes in Engineering and Veterinary Medicine that had interim accreditation status were re-visited and granted full accreditation.

During the year, the University Senate approved the splitting of the Academic Planning Unit into two sections, namely, the Internal Quality Assurance and the Resource Planning Sections. This became necessary in view of the new thrust of the National Universities Commission to improve education in and ranking of Universities by addressing issues like Quality Assurance and Institutional Accreditation.

In preparation for the new direction, the Unit organized a Step-Down Workshop on University Ranking and Institutional Accreditation, to sensitize the University community. The University Management has also deployed appropriate strategies to see to it that Quality Assurance and Institutional Accreditation receive the deserved attention.

The Full-Time Equivalent (FTE) of Departments for the current session 2008/2009 has been calculated and it formed part of the basis for the analysis in this revised edition.

You will surely find this publication interesting. Please be free to make your comments and observations on this publication to Academic Planning Unit and you can be sure it will be given the attention it deserves.

Table 1: Institutional Information as at November, 2009

Name of Institution	University of Agriculture, Abeokuta
Year of Establishment	1988
Ownership: Federal/State/Private	Federal Government
Name & Address of Proprietor	Federal Government of Nigeria, % Federal Ministry of Education
Name & Address of Chancellor	Professor Obi Chike Edozien The Asagba of Asaba
Name & Address of Pro-Chancellor	Chief L.A.O. Osayemi
Name of Vice-Chancellor/Director/Executive Secretary + telephone and e-mail	Professor Oluwafemi Olaiya Balogun unaab_vc@yahoo.com +234-703-401-4747, +234-703-414-7636
Name of Deputy Vice-Chancellor (Academic) + telephone and e-mail	Professor C.F.I. Onwuka chysonka@yahoo.com +234-803-337-6854
Name of Deputy Vice-Chancellor (Development) + telephone and e-mail	Professor S.T.O. Lagoke pascon1@yahoo.com +234-803-337-1043
Name of Registrar + telephone and e-mail	Mr. Ademola Oyerinde +234-708-399-5491, +234-803-319-9414 registrar@unaab.edu.ng
Name of Bursar + telephone and e-mail	Mr. Elijah Olorunsogo Ajayi 08033196209 ajayi_sogo@yahoo.com
Name of Librarian + telephone & e-mail	Mr. Abayomi Tunji Agboola +234-803-337-7644 atagboola05@yahoo.com
Name of DAP + telephone and e-mail	Professor Kehinde Adebayo Okeleye +234-803-454-1894 professorokeleye@yahoo.co.uk
Institution Telephone Numbers (functional)	(039)245290-1 +234-703-401-4747, +234-803-319-9414
Institution website	www.unaab.edu.ng
Institution e-mail	registrar@unaab.edu.ng

ACADEMIC PROGRAMMES

ACADEMIC PROGRAMMES

Table 2: Undergraduate Programmes as at 2008/2009 Academic Session:

S/No	College/Department	Approval Status	Year of Commencement	Accreditation Status
	COLLEGE OF AGRICULTURAL MANAGEMENT AND RURAL DEVELOPMENT			
1	*Department of Agricultural Economics & Farm Management. B.Agric.	Approved.	1988	Full-Accreditation.
2	*Department of Agricultural Extension & Rural Development. B.Agric.	Approved.	1988	Full-Accreditation.
3	Department of Agricultural Administration	Approved	2009	New Programme
	COLLEGE OF FOOD SCIENCE & HUMAN ECOLOGY (COLFHEC)			
4	Department of Home Science Mgt. B.Sc.	Approved.	1988	Full-Accreditation.
5	Department of Nutrition & Dietetics. B.Sc.	Approved.	2004	Full-Accreditation.
6	Department of Food Science & Technology. B.Sc	Approved.	1982	Full-Accreditation.
	COLLEGE OF ANIMAL SCIENCE & LIVESTOCK PRODUCTION (COLANIM)			
7	*Department of Animal Breeding & Genetics. B.Agric.	Approved.	1988	Full-Accreditation.
8	*Department of Animal Nutrition. B.Agric.	Approved.	1988	Full-Accreditation.
9	*Department of Animal Production & Health. B.Agric.	Approved.	1988	Full-Accreditation.
10	*Department of Pasture & Range B.Agric.	Approved.	1988	Full-Accreditation.
11	*Department of Animal Physiology. B.Agric.	Approved.	2006	Full-Accreditation.
	COLLEGE OF ENVIRONMENTAL RESOURCES MANAGEMENT (COLERM)			
12	* Department of Aquaculture & Fisheries Mgt. B.Fisheries.	Approved.	1993	Full-Accreditation.
13	* Department of Enviromental Mgt & Toxicology. B.EMT.	Approved.	1988	Full-Accreditation.
14	* Department of Forestry & Wildlife Mgt. B.FWM.	Approved.	1988	Full-Accreditation.
15	* Department of Water Resource Mgt. & Agromet. Dept. B.AWRM.	Approved.	1988	Full-Accreditation.
	COLLEGE OF NATURAL SCIENCES (COLNAS)			
16	** Department of Microbiology. B.Sc.	Approved.	2002	Full-Accreditation.
17	** Department of Biological Science. B.Sc.	Approved.	1988	Full-Accreditation.
18	** Department of Biochemistry. B.Sc.	Approved.	2000	Full-Accreditation.

19	** Department of Chemistry. B.Sc.	Approved.	1988	Full-Accreditation.
20	** Department of Mathematics. B.Sc.	Approved.	1988	Full-Accreditation.
21	** Department of Computer Science. B.Sc.	Approved.	2004	Full-Accreditation.
22	** Department of Statistics. B.Sc.	Approved.	2004	Full-Accreditation.
23	** Department of Physics. B.Sc	Approved.	1988	Full-Accreditation.
COLLEGE OF PLANT SCIENCE (COLPLANT)				
24	* Department of Crop Protection. B.Agric	Approved.	1988	Full-Accreditation.
25	* Department of Plant Breeding & Seed Technology. B.Agric.	Approved.	1988	Full-Accreditation.
26	* Department of Horticulture. B.Agric.	Approved.	1988	Full-Accreditation.
27	* Department of Plant Physiology & Crop Production. B.Agric.	Approved.	1993	Full-Accreditation.
28	* Department of Soil Science & Land Mgt. B.Agric	Approved.	1988	Full-Accreditation.
COLLEGE OF ENGINEERING (COLENG)				
29	Department of Agric. Engineering. B.Eng	Approved.	2000	Full Accreditation.
30	Department of Civil Engineering. B.Eng	Approved.	2000	Interim Accreditation.
31	Department of Mechanical Engineering. B.Eng	Approved.	2000	Full Accreditation.
32	Department of Electrical Engineering. B.Eng	Approved.	2000	Interim Accreditation.
COLLEGE OF VETERINARY MEDICINE (COLVET)				
33	Department of Vet. Anatomy. DVM	Approved.	2000	Full Accreditation
34	Department of Vet. Physiology and Pharmacology. DVM	Approved.	2000	Full Accreditation
35	Department of Vet. Microbiology Parasitology. DVM	Approved.	2000	Full Accreditation
36	Department of Vet. Pathology. DVM	Approved.	2000	Full Accreditation
37	Department of Vet. Medicine and Surgery. DVM	Approved.	2000	Full Accreditation
38	Department of Vet. Public Health. DVM	Approved.	2000	Full Accreditation

** Also run as Part-time programme for a duration of 6 Academic Sessions*

*** Also run as Part-time programme for a duration of 5 Academic Sessions*

Table 3: Postgraduate Programmes as at 2008/2009 Academic Session

S/N	Programme	Approval Status	Year of Commencement
	College of Agric Management and Rural Development (COLAMRUD)		
	<u>Dept of Agric Econs & Farm Mgt</u>		
1	Agric Econs & Farm Mgt	Approved	1992
	<u>Dept of Agric Extension & Rural Development</u>		
1	Agricultural Communication	Approved	1992
2	Agric Extension & Rural Development	Approved	1992
3	Subject Matter Extension	Approved	1992
	<u>Dept of Nutrition & Dietetics</u>		
1	Nutrition and Dietetics	Approved	2006
	<u>Dept of Home Science & Mgt</u>		
1	Clothing and Textiles	Approved	1992
2	Home Science Management	Approved	1992
	<u>Dept of Food Science & Technology</u>		
1	Food Quality Control & Assurance	Approved	1992
2	Food Microbiology & Biotechnology	Approved	1992
3	Biotechnology	Approved	1992
4	Food Engineering	Approved	1992
5	Food Processing & Storage	Approved	1992
6	Brewing Technology	Approved	1992
	College of Animal Nutrition and livestock Production (COLANIM)		
	<u>Dept of Animal Nutrition</u>		
1	Ruminant Animal Nutrition	Approved	1992
2	Monogastric Animal Nutrition	Approved	1992
	<u>Dept of Animal Production & health</u>		

1	Ruminant Production	Approved	1992
2	Non-Ruminant Production	Approved	1992
3	Animal Reproduction	Approved	1992
	<u>Dept of Animal Breeding & Genetics</u>		
1	Animal Breeding & Genetics	Approved	1992
2	Livestock System	Approved	1992
	<u>Dept of Pasture & Range Management</u>		
1	Pasture & Range Management	Approved	1992
	<u>Dept of Animal Physiology</u>		
	Animal physiology	Approved	1992
	College of Plant Science and Crop Production (COLPLANT)		
	<u>Dept of Crop Protection</u>		
1	Crop Protection	Approved	1992
	<u>Dept of Plant Physiology & Crop Production</u>		
1	Crop Production	Approved	1992
2	Crop Ecology	Approved	1992
3	Crop Physiology	Approved	1992
4	Weed Science	Approved	1992
	<u>Dept of Plant Breeding & Seed Technology</u>		
1	Plant Breeding	Approved	1992
2	Seed Technology	Approved	1992
	<u>Dept of Soil Science & Land Management</u>		
1	Soil Science	Approved	1992
	<u>Dept of Horticulture</u>		
1	Horticulture	Approved	1992
	College of Environmental Resources Management (COLERM)		

	<u>Dept of Forestry & Wildlife Management</u>		
1	Forest Economics & Management	Approved	1992
2	Forest Ecology & Conservation	Approved	1992
3	Agro- forestry	Approved	1992
4	Forestry Biometry	Approved	1992
5	Wildlife Management	Approved	1992
6	Wildlife Domestication & Production	Approved	1992
7	Wildlife Park Planning & Recreational Development	Approved	1992
	<u>Dept of Aqua-Culture & Fisheries Mgt</u>		
1	Aquaculture	Approved	1992
2	Fisheries Management	Approved	1992
3	Fish Nutrition	Approved	1992
4	Fish Pathology	Approved	1992
	<u>Dept of Agrometeorology & Water Resources Mgt</u>		
1	Agrometeorology	Approved	1992
2	Water Resources	Approved	1992
	<u>Dept of Env. Mgt. & Toxicology</u>		
1	Environmental Protection	Approved	1992
	College of Natural Sciences (COLNAS)		
	<u>Dept of Biochemistry</u>		
	Biochemical Toxicology	Approved	1992
	Nutritional Biochemistry	Approved	1992
	Biochemistry	Approved	1992
	<u>Dept of Biology</u>		
1	Parasitology	Approved	1992
2	Entomology	Approved	1992

3	Cytogenetics	Approved	1992
4	Cytology	Approved	1992
	<u>Dept of Micro-Biology</u>		
1	Micro-Biology	Approved	1992
	<u>Dept of Botany</u>		
1	Botany(Plant Physiology)	Approved	1992
2	Plant Taxonomy	Approved	1992
	<u>Dept of Mathematics</u>		
1	Mathematics	Approved	1992
	<u>Dept of Statistics</u>		
1	Statistics	Approved	1992
	<u>Dept of Computer Sciences</u>		
1	Computer Sciences	Approved	1992
	<u>Dept of Chemistry</u>		
	Analytical Chemistry	Approved	1992
	Inorganic Chemistry	Approved	1992
	Organic Chemistry	Approved	1992
	Physical Chemistry	Approved	1992
	Industrial Chemistry	Approved	1992

Table 4: Summary of Academic Programmes as at 2008/2009 Academic Session

PROGRAMME	UNDER GRADUATE B. Sc, B. Agric.	POSTGRADUATE			TOTAL
		PGD	M. Sc, M.Agric, MAF, MWF,MWM,MWS	Ph. D	
AGRICULTURE	1	9	13	12	35
ENGINEERING	4	0	0	0	4
ENVIRON. SCIENCES	4	1	6	6	17
SCIENCES	11	9	12	12	44
VET. MEDICINE	1	0	8	8	17
TOTAL	21	19	39	38	117

STUDENTS' ENROLMENT

Table 5: ADMITTED STUDENTS BY DISCIPLINE

DISCIPLINE	2003/2004		2005/2006		2006/2007		2007/2008		2008/2009	
	Male	Female	Male	Female	Male	Female	Male	Female	Male	Female
Agriculture	484	191	514	246	527	190	357	351	494	176
Engineering	45	1	49	5	75	17	58	49	465	301
Environmental Sciences	160	79	173	67	158	64	88	91	150	55
Sciences	255	155	471	77	429	172	230	372	99	12
Vet. Medicine	16	8	20	11	18	9	22	7	18	6
TOTAL	960	434	1227	406	1207	452	755	870	1226	550
GRAND TOTAL	1394		1633		1659		1625		1776	

Table 6: Students' Enrolment by Discipline

DISCIPLINE	2003/2004	2005/2006	2006/2007	2007/2008	2008/2009
------------	-----------	-----------	-----------	-----------	-----------

	Male	Female	Male	Female	Male	Female	Male	Female	Male	Female
Agriculture	1497	775	1931	1132	2022	990	2151	1084	2342	1134
Engineering	134	11	161	17	228	24	279	26	347	26
Environmental Sciences	621	270	728	334	723	287	685	273	717	279
Sciences	930	419	1557	1497	1433	1016	1429	1088	1632	1221
Vet. Medicine	59	16	74	27	88	35	103	43	106	51
TOTAL	3241	1491	4451	3007	4494	2352	4647	2514	5143	2711
GRAND TOTAL	4732		7458		6846		7161		7854	

Table 7: POSTGRADUATE FRESH STUDENTS ENROLMENT – 2008/09 ACADEMIC SESSION

MODE OF STUDY	MALE	FEMALE	TOTAL
FULL TIME	163	117	280
PART TIME	40	19	59
TOTAL	203	136	339

Figure 1

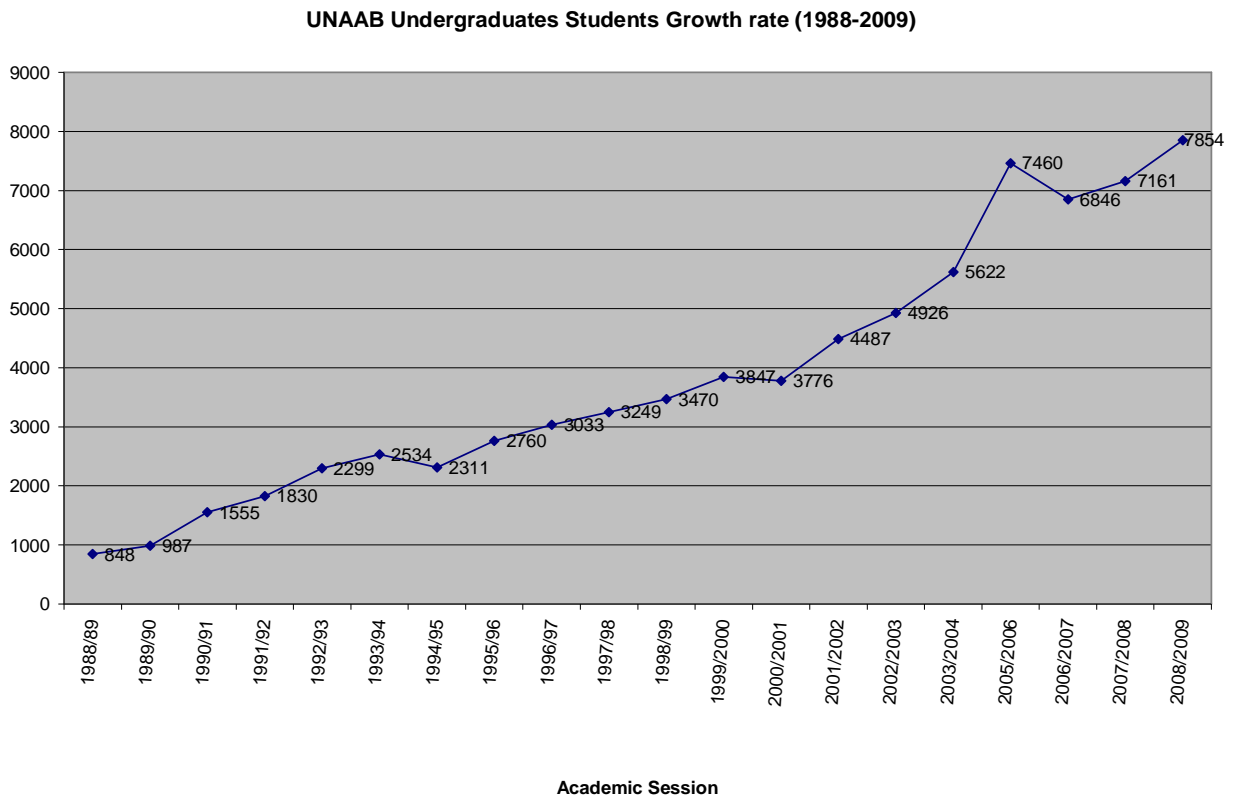
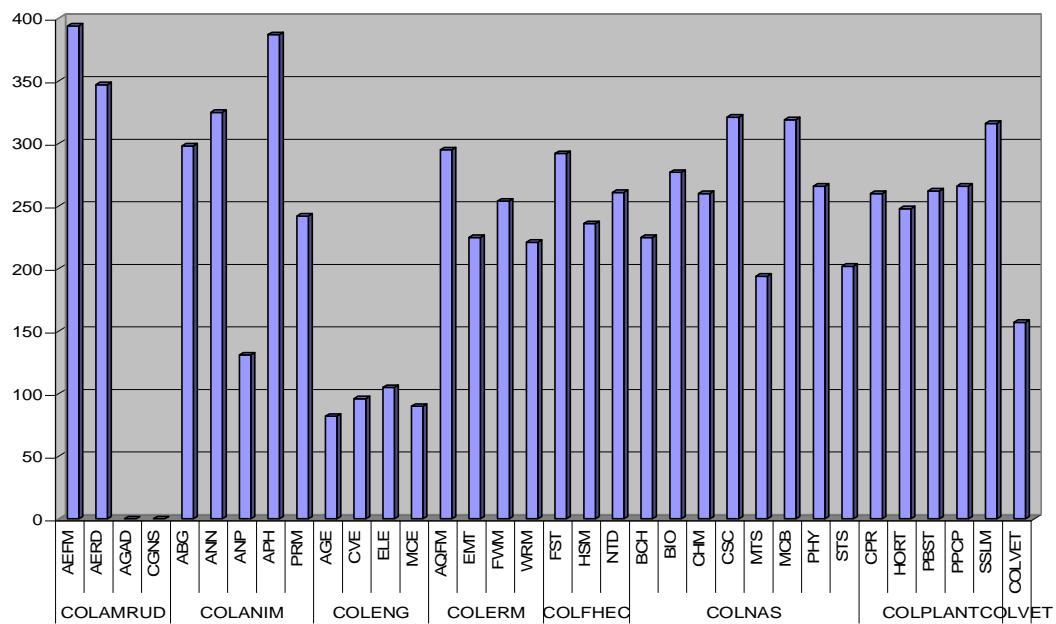


Figure 2

UNDERGRADUATE STUDENTS' ENROLMENT BY DEPARTMENT 2008/2009



DISTRIBUTION OF NEW ENTRANTS BY STATE OF ORIGIN AND SEX (UNDERGRADUATE)

Table 8i

2008/2009 ACTUAL

DIRECT TEACHING UNIT	ABIA		ADAMA WA		A/IBOM		ANAMB RA		BAUCHI		BAYEL SA		BENUE		BORNO		C/RIVER		DELTA		EBONYI		EDO		EKITI		ENUGU		GOMBE	
	M	F	M	F	M	F	M	F	M	F	M	F	M	F	M	F	M	F	M	F	M	F	M	F	M	F	M	F	M	F
COLAMRUCS																														
Dept of Agric Econs & Farm Mgt																			2	2					2	2				
Dept of Agric Ext & Rural Dev.																			3				1		3					
Agric Administration																														
COLFHEC																														
Dept of Food Sci & Technology																	1	1	2					1	1	1	1			
Dept of Home Science & Mgt					1																		1	1		1				
Dept of Nutrition & Dietetics																							1	2		2				
Dept of Food Services & Tourism																														
COLANIM																														
Dept of Animal Breeding & Genetics					2		1	1											2					2		1				
Dept of Animal Nutrition	1																		1	1			2	1	1					

Dept of Animal Prod, & Health		1					1		1																			
Dept of Animal Physiology	1						1								1				2	1	3	2						
Dept of Pasture & Range Mgt								1																				
COPLANT																												
Dept of Crop Protection					1											1	1					1						
Dept of Soil Science & Land Mgt																2					1							
Plant Breeding & Seed Technology							1								1			1	1		1							
Plant Physiology & Crop Production																1			1	2	2							
Horticulture																3			1		2							
COLERM																												
Dept of Environmental Mgt & Toxicology	1						1	1							1	3			2		3	1						
Dept of Acqua Culture & Fisheries Mgt											1				1	2			1	1	2	1						
Dept of Forestry & Wildlife Management																	1		1		1							
Dept of Water Resources Management																1			1		1							
COLNAS																												
Dept of Biochemistry							1									2		1		1	1							
Dept of Biological Sciences		2			1			2							1		2			3	1	2	1					
Dept of Chemistry							1													1		1	1					

Dept of Computer Sciences								1									1	1	1					2	3					
Dept of Mathematics																		1	1				1	2						
Dept of Micro Biology		1			1						1					2														
Dept of Physics	2				2		1											1				5	1	3						
Dept of Statistics						1												2				2		2						
COLENG																														
Dept of Agric Engineering																														
Dept of Mechanical Engineering																		1		1										
Dept of Electrical Engineering	1																	1												
Dept of Civil Engineering						1												1			1			1						
COLVET																														
College of Veterinary Medicine																1		1	1					1						
Total	6	4	0	0	8	2	7	7	0	0	1	1	1	0	0	1	6	2	35	12	2	1	28	15	36	18	1	0	0	0

Table 8ii

DISTRIBUTION OF NEW ENTRANTS BY STATE OF ORIGIN AND SEX (UNDERGRADUATE)
2008/2009 ACTUAL

	2006/2007 NOTICE																													
DIRECT TEACHING UNIT	IMO		JIGAWA		KADUNA		KANO		KATSINA		KEBBI		KOGI		KWARA		LAGOS		NASARAWA		NIGER		OGUN		ONDO		OSUN		OYO	
	M	F	M	F	M	F	M	F	M	F	M	F	M	F	M	F	M	F	M	F	M	F	M	F	M	F	M	F	M	F
COLAMRUCS																														
Dept of Agric Econs & Farm Mgt	2												1		1	2					1		15	11	3	2	3	5	9	5
Dept of Agric Ext & Rural Dev.															2	2	3					20	7	4	1	12	5	8	7	
Agric Administration																														
COLFHEC																														
Dept of Food Sci & Technology															2		1	3					12	18	2	3	1	9	5	10
Dept of Home Science & Mgt		1													1	10	19							2		1	2	5	4	
Dept of Nutrition & Dietetics													2		2		1	3					13	13	2	3		3	2	3
Dept of FoodServices & Tourism																														
COLANIM																														
Dept of Animal Breeding&Genetics																2							20	8	3		2	4	7	
Dept of Animal Nutrition														1	1		5						21	5	1	1	9	2	7	4
Dept of Animal Prod, & Health															2		3						28	4	1	1	14	2	14	6

Dept of Animal Physiology																	2	1													15	5		3	4		9	1
Dept of Pasture & Range Mgt																															12	3		2	5	3	8	2
COPLANT																																						
Dept of Crop Protection		1											1				2	2													7	13	2		8	3	7	3
Dept of Soil Science & Land Mgt													1		1		2														8	1	3		6	1	9	
Plant Breeding & Seed Technology	1																4	1													14	5	1	1	7		7	3
Plant Physiology & Crop Production																	5	2													19	3	3		8		5	
Horticulture		1											1			1	1	1													16	1	6		4		11	2
COLERM																																						
Dept of Environmental Mgt & Toxicology	2																3	1													15	7	2	3	6	1	7	2
Dept of Acqua Culture & Fisheries Mgt													1				3	1													9	8	2	3	5		9	
Dept of Forestry & Wildlife Management													1			1	6	1													25	11			10	3	5	7
Dept of Water Resources Management		1															4														6		2		1		3	
COLNAS																																						
Dept of Biochemistry													1				3														26	16	2		4	2	8	3
Dept of Biological Sciences	2												3				5	4													17	17	3	2	6	5	3	6
Dept of Chemistry	4	1											1		2	1	9	6													28	17	6	4	6	7	4	12

Dept of Computer Sciences															1	1	1	3						19	7	6	1	3		9	2
Dept of Mathematics												3					9	1					33	7					13	5	
Dept of Micro Biology																	1	2					24	29							
Dept of Physics																	4						33	2	6		9	1	11	1	
Dept of Statistics	1												1				4						7	3			2	2	11	1	
COLENG																															
Dept of Agric Engineering	1																						8	1	3		3	1	3	1	
Dept of Mechanical Engineering													1		1		3						13		3		3		3		
Dept of Electrical Engineering															2	1	4						11				4		5	1	
Dept of Civil Engineering																1	1	1					8	3	2		5		6		
COLVET																															
College of Veterinary Medicine																	1						8	4	2		2	1	2		
Total	13	5	0	0	0	0	0	0	0	0	0	0	15	4	14	10	102	55	0	0	0	1	510	229	72	30	153	62	215	91	

Table 8iii:

DISTRIBUTION OF NEW ENTRANTS BY STATE OF ORIGIN AND SEX (UNDERGRADUATE)

2008/2009 ACTUAL

DIRECT TEACHING UNIT	PLATEAU		RIVERS		SOKOTO		TARABA		YOBE		ZAMFARA		FCT		FOREIGNER		ALL STATES		G/TOTAL
	M	F	M	F	M	F	M	F	M	F	M	F	M	F	M	F	M	F	M&F
COLAMRUCS																			
Dept of Agric Econs & Farm Mgt																	38	30	68
Dept of Agric Ext & Rural Dev.																	53	25	78
Agric Administration																	0	0	
COLFHEC																			
Dept of Food Sci & Technology																	26	48	74
Dept of Home Science & Mgt																	20	29	49
Dept of Nutrition & Dietetics																	23	29	52
Dept of FoodServices & Tourism																	0	0	
COLANIM																			
Dept of Animal Breeding&Genetics																	39	16	55
Dept of Animal Nutrition																	49	15	64
Dept of Animal Prod, & Health			1														64	15	79
Dept of Animal Physiology																	38	13	51
Dept of Pasture & Range Mgt																	25	11	36
COPLANT																			

Dept of Crop Protection																	28	25	53
Dept of Soil Science & Land Mgt																	33	2	35
Plant Breeding & Seed Technology																	38	11	49
Plant Physiology & Crop Production																	44	7	51
Horticulture																	45	6	51
COLERM																			
Dept of Environmental Mgt & Toxicology																	46	16	62
Dept of Acqua Culture & Fisheries Mgt																	36	14	50
Dept of Forestry & Wildlife Management																	49	24	73
Dept of Water Resources Management																	19	1	20
COLNAS																			
Dept of Biochemistry																	48	23	71
Dept of Biological Sciences																	46	43	89
Dept of Chemistry																	63	49	112
Dept of Computer Sciences																	42	20	62
Dept of Mathematics																	61	15	76
Dept of Micro Biology																	28	33	61
Dept of Physics																	77	5	82
Dept of Statistics																	31	7	38

COLENG																			
Dept of Agric Engineering																	18	3	21
Dept of Mechanical Engineering																	29	0	29
Dept of Electrical Engineering																	28	2	30
Dept of Civil Engineering																	24	7	31
COLVET																			
College of Veterinary Medicine																	18	6	24
TOTAL	0	0	1	0	0	0	0	0	0	0	0	0	0	0	0	0	1226	550	1776

Table 9: UNAAB Students Enrolment by Mode of Study – 2008/09

Category	Full-Time			Part-Time		
	Male	Female	Total	Male	Female	Total
Pre-Degree	919	546	1465	-	-	-
Diploma	392	265	657	-	-	-
Undergraduate	5143	2711	7854	130	93	223
Postgraduate	453	285	738	117	70	187
Total	6907	3807	10714	243	152	395

FULL-TIME EQUIVALENT FOR STUDENTS AND CARRYING CAPACITY

Table 10: CARRYING CAPACITY FOR 2008/2009

DEPT.	HC	FTE	CC BY FTE	TSR (NUC)	NT	ENT
COLAMRUCS						
AEFM	393	426	28	1:15	16	28
AERD	346	241	16	1:15	14	16
AGAD	0	0	0	1:15	5	0
CGNS	0	500	14	1:35	11	14
TOTAL	739	1167	58		46	58
COLANIM						
ABG	293	127	9	1:15	9	9
ANN	311	177	12	1:15	16	12
ANP	127	166	11	1:15	11	11
APH	376	392	26	1:15	15	26
PRM	237	38	3	1:15	7	3
TOTAL	1344	900	61		58	61
COLENG						
AGE	82	173	12	1:15	14	12
CVE	93	57	4	1:15	11	4
ELE	103	61	4	1:15	9	4
MCE	89	73	5	1:15	11	5
TOTAL	367	364	25		45	25
COLERM						
AQFM	285	208	14	1:15	15	14
EMT	220	121	8	1:15	15	8
FWM	246	216	14	1:15	18	14
WRMA	203	232	16	1:15	15	16
TOTAL	954	777	52	1: 15	63	52
COLFHEC						
FST	292	191	10	1:20	13	10
HSM	236	151	8	1:20	11	8
NTD	261	129	7	1:20	11	7

TOTAL	789	471	25		35	25
COLNAS						
BCH	216	113	6	1:20	10	6
BIO	159	424	22	1:20	18	22
CHM	247	783	39	1:20	19	39
CSC	311	316	16	1:20	10	16
MTS	193	557	28	1:20	13	28
MCB	310	116	15	1:20	15	15
PHS	254	595	30	1:20	17	30
STS	199	202	10	1:20	12	10
TOTAL	1889	3106	166		114	166
COLPLANT						
CPT	254	70	5	1:15	13	5
HORT	236	83	6	1:15	9	6
PBST	253	218	12	1:15	13	12
PPCP	246	340	23	1:15	18	23
SSLM	299	188	13	1:15	15	13
TOTAL	1288	899	59			
COLVET						
VET ANATOMY	140	107	11	1:10	55	11
VET. PHY. & PHARM.						
VET. MICRO. & PARA.						
VET.MED. & SURG.						
VET. PATHOLOGY						
VET. PUBLIC HEALTH & REPRODUCTION						
TOTAL	140	107	11	1:10	55	11
Key:						
HC - HEADCOUNT						
CC – CARRYING CAPACITY						
FTE - FULL-TIME EQUIVALENT						
TSR – TEACHER/STUDENTS RATIO						
NT – CURRENT NUMBER OF TEACHERS						
ENT-EXPECTED NUMBER OF TEACHERS						

TEACHER- STUDENT RATIO

Table 11: TEACHER/STUDENTS RATIO (TSR) BY DISCIPLINE AS AT OCTOBER, 2009

	DISCIPLINE					
	AGRICULTURE	ENGINEERING	ENVIRONMENTAL SCIENCES	SCIENCES	VETERINARY MEDICINE	GRAND TOTAL
Number of Teachers	172	45	57	149	55	478
Number of Students	3476	373	996	2853	157	7854
TSR (Actual)	<i>1: 21</i>	<i>1: 9</i>	<i>1: 18</i>	<i>1: 20</i>	<i>1: 3</i>	<i>1: 17</i>
NUC RATIO	1:15	1:15	1:15	1:20	1:10	

GRADUATE OUTPUT

Table 12: GRADUATE OUTPUT BY DISCIPLINE

DISCIPLINE	2000/2001		2001/2002		2002/2003		2003/2004		2005/2006		2006/2007		2007/2008	
	M	F	M	F	M	F	M	F	M	F	M	F	M	F
Agriculture	133	147	139	161	143	154	180	112	223	127	222	124	295	167
Engineering	-	-	-	-	-	-	-	-	-	-	28	3	29	6
Environmental Sciences	96	35	91	42	86	49	74	47	92	57	111	45	129	40
Sciences	196	87	176	81	185	102	163	169	205	169	237	252	270	210
Vet. Medicine	-	-	-	-	-	-	-	-	-	-	-	-	13	1
TOTAL	425	269	406	284	414	305	417	328	520	353	598	424	736	424
GRAND TOTAL	694		690		719		745		873		1022		1160	

Table 13: Graduate Output by Gender and Class of Degree (2007/2008)

COLLEGE	First Class		Second Class Upper		Second Class Lower		Third Class		Pass		TOTAL	
	M	F	M	F	M	F	M	F	M	F	M	F
<u>COLAMRUCS</u>												
Agricultural Economics and Farm Management	2	0	16	18	28	15	9	6	2	4	57	43
Agricultural Extension and Rural Development	0	0	5	1	16	9	4	2	1	0	26	12
Food Science and Technology	1	0	3	12	8	14	1	2	2	0	15	28
Home Science and Management	0	0	1	7	8	20	1	9	2	2	12	38
Nutrition and Dietetics	0	0	2	19	5	24	2	2	0	0	9	45
Total	3	0	27	57	65	82	17	21	7	6	119	166
<u>COLANIM</u>											0	0
Animal Breeding and Genetics	1	0	9	4	19	10	5	0	0	0	34	14
Animal Nutrition	2	0	6	9	18	6	2	4	1	0	29	19
Animal Physiology											0	0
Animal Production and Health	2	1	15	9	20	10	9	2	4	0	50	22
Pasture and Range Management	0	0	3	0	7	5	3	2	1	0	14	7
Total	5	1	33	22	64	31	19	8	6	0	127	62
<u>COLENG</u>											0	0

Agricultural Engineering	0	0	1	0	4	0	1	1	0	0	6	1
Civil Engineering	0	0	3	0	4	2	0	0	0	0	7	2
Electrical Engineering	1	1	5	2	2	0	0	0	0	0	8	3
Mechanical Engineering	0	0	5	0	3	0	1	0	0	0	9	0
Total	1	1	14	2	13	2	2	1	0	0	30	6
<u>COLERM</u>											0	0
Aquaculture and Fisheries Management	2	0	10	0	16	10	2	0	1	0	31	10
Environmental Management and Toxicology	1	1	15	6	20	3	1	8	0	0	37	18
Forestry and Wildlife Management	0	0	14	8	14	1	3	1	0	0	31	10
Water Resources Management	0	0	9	0	14	3	4	0	1	0	28	3
Total	3	1	48	14	64	17	10	9	2	0	127	41
<u>COLNAS</u>											0	0
Biochemistry	0	0	0	5	6	8	2	4	2	0	10	17
Biological Sciences	0	0	2	2	14	6	7	3	3	1	26	12
Chemistry	0	1	5	2	11	1	1	0	1	2	18	6
Computer Sciences	0	0	12	2	43	20	10	2	4	0	69	24
Mathematics	2	0	2	0	5	1	0	0	1	0	10	1
Microbiology	0	0	7	8	14	19	2	5	0	0	23	32
Physics	0	0	7	0	22	1	7	1	3	1	39	3
Statistics	0	0	8	1	16	5	4	2	4	0	32	8
Total	2	1	43	20	131	61	33	17	18	4	227	103
<u>COLPLANT</u>											0	0
Crop Protection	0	0	4	5	9	4	4	1	0	0	17	10
Horticulture	0	0	2	2	11	6	4	1	0	0	17	9
Plant Breeding and Seed Technology	0	0	4	3	8	8	4	1	0	0	16	12
Plant Physiology and Crop Production	0	0	6	2	4	4	2	0	0	0	12	6
Soil Science and Land Management	0	1	9	5	11	3	4	2	1	0	25	11
Total	0	1	25	17	43	25	18	5	1	0	87	48
<u>COLVET</u>	UNCLASSIFIED										13	1
	14	5	190	132	380	218	99	61	34	10	736	424
GRAND TOTAL	19		322		598		160		44		1160	

Figure 3:

UNAAB Graduate Output 2007/2008

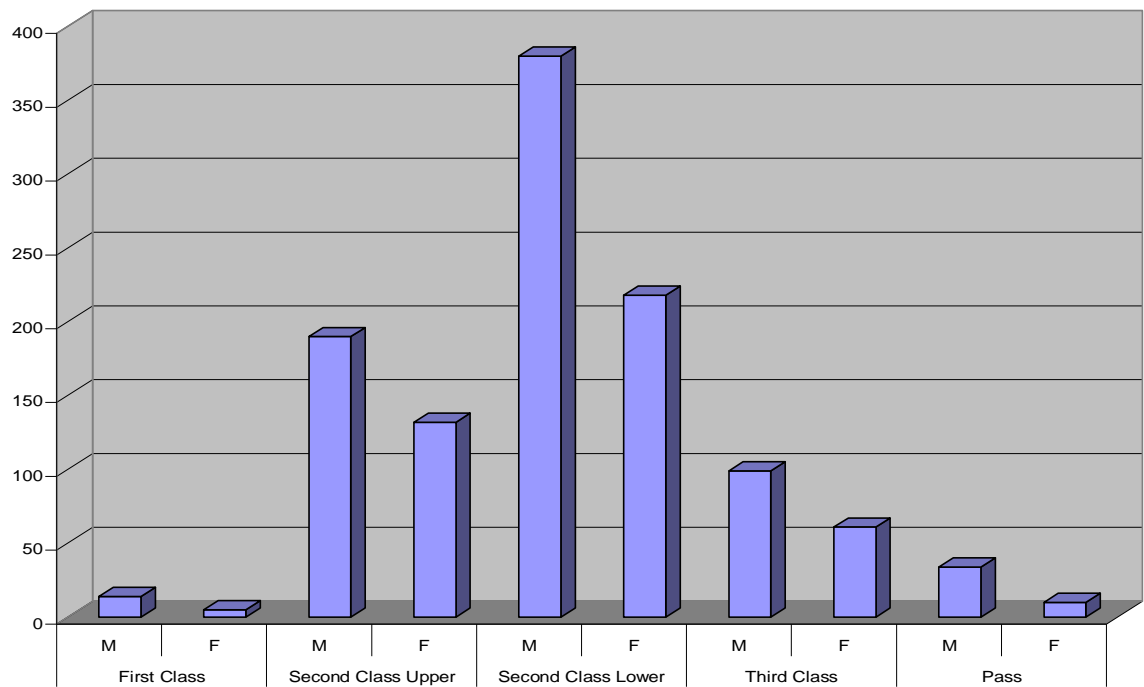


Figure 4

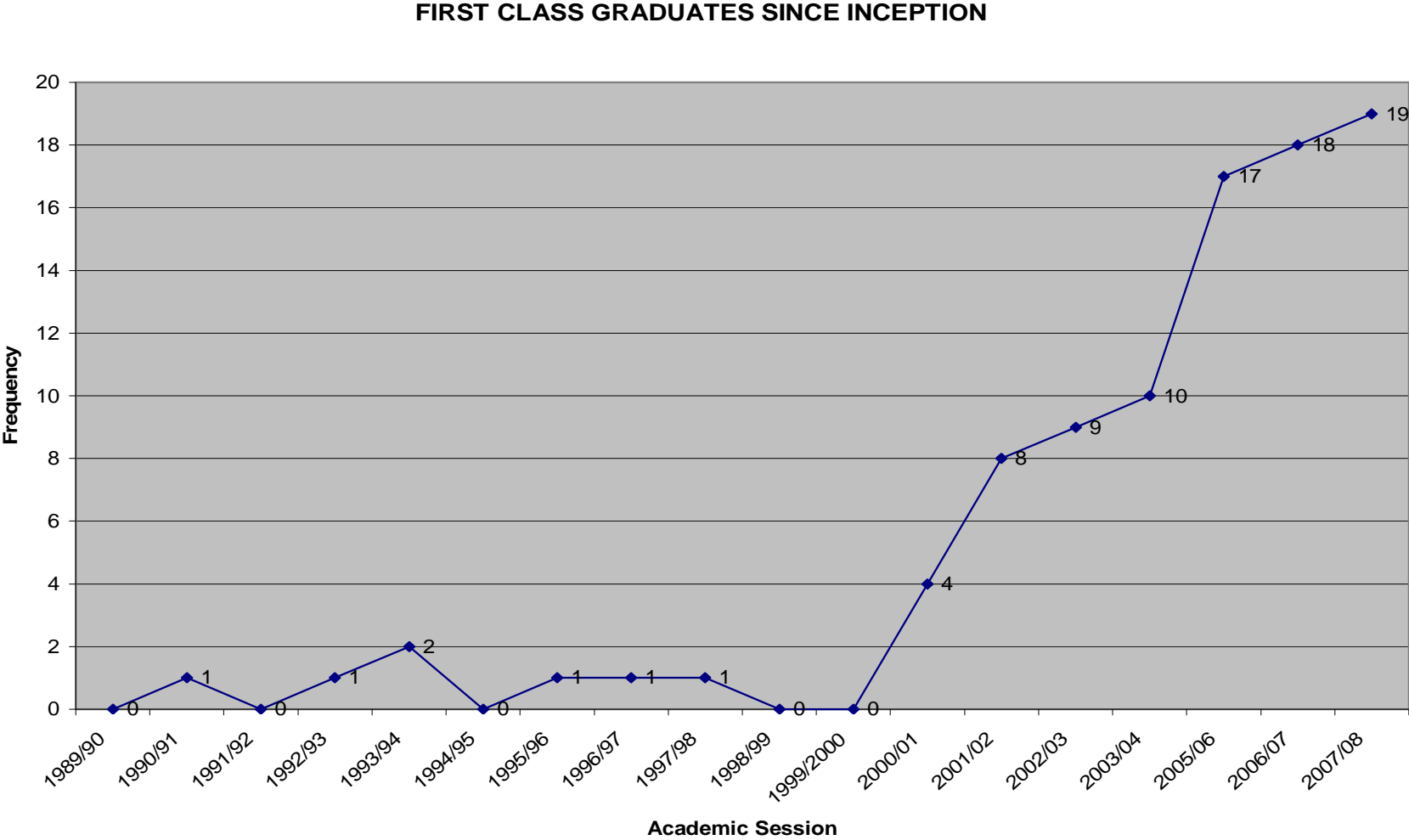


Table 14: ACADEMIC STAFF BY CATEGORY AND GENDER (OCTOBER, 2009)

College/Department	Professor/Reader	%	Senior Lect.	%	Lecturer I & Others	%	Total	Grand Total				
COLLEGE OF AGRICULTURAL MANAGEMENT AND RURAL DEVELOPMENT												
Dept. of Agric. Economics & Farm Management	4	1	33	3	0	20	5	2	47	12	3	15
Dept. of Agric. Extension & Rural Development	4	0	27	4	1	33	4	2	40	12	3	15
Dept. of Agricultural Administration	1	0	20	0	1	20	3	0	60	4	1	5
Dept. of Communication & General Studies	1	1	25	0	2	25	1	3	50	2	6	8
SUB-TOTAL	10	2	28	7	4	26	13	7	47	30	13	43
COLLEGE OF ANIMAL SCIENCE & LIVESTOCK PRODUCTION												
Dept. of Animal Breeding & Genetics	2	1	38	0	1	13	4	0	50	6	2	8
Dept. of Animal Nutrition	2	1	25	1	1	17	5	2	58	8	4	12
Dept. of Animal Physiology	2	0	18	2	0	18	5	2	64	9	2	11
Dept. of Animal Production & Health	4	0	27	1	0	6.7	8	2	67	13	2	15
Dept. of Pasture & Range Management	1	1	29	2	0	29	2	1	43	5	2	7
SUB-TOTAL	11	3	26	6	2	15	24	7	58	41	12	53
COLLEGE OF ENGINEERING												
Dept. of Agric. Engineering	4	0	31	2	0	15	7	0	54	13	0	13
Dept. of Civil Engineering	0	0	0	1	0	11	6	2	89	7	2	9
Dept. of Electrical/electronics Engineering	0	0	0	1	0	14	5	1	86	6	1	7

Dept. of Mechanical Engineering	3	0	30	1	0	10	5	1	60	9	1	10
SUB-TOTAL	7	0	18	5	0	13	23	4	69	35	4	39
COLLEGE OF ENVIRONMENTAL RESOURCE MANAGEMENT												
Dept. of Aqua-culture & Fisheries Management	6	0	38	1	2	19	6	1	44	13	3	16
Dept of Environmental Toxicology	2	0	15	2	1	23	6	2	62	10	3	13
Dept. of Forestry & Wildlife Management	4	0	33	2	0	17	5	1	50	11	1	12
Dept. of Water Resource Management	2	0	25	1	0	13	4	1	63	7	1	8
SUB-TOTAL	14	0	29	6	3	18	21	5	53	41	8	49
COLLEGE OF FOOD TECHNOLOGY AND HUAMN ECOLOGY												
Dept. of Food Science & Technology	4	2	46	0	1	7.7	4	2	46	8	5	13
Dept. of Home Science & Management	1	0	20	0	1	20	1	2	60	2	3	5
Dept. of Nutrition & Dietetics	1	2	43	1	0	14	1	2	43	3	4	7
Dept. of Food Service & Tourism	0	0	0	1	0	25	1	2	75	2	2	4
SUB-TOTAL	6	4	34	2	2	14	7	8	52	15	14	29
COLLEGE OF NATURAL SCIENCES												
Dept. of Biochemistry	1	1	33	1	0	17	2	1	50	4	2	6
Dept. of Biological Sciences	4	0	36	3	2	45	2	0	18	9	2	11
Dept. of Chemistry	3	1	25	1	1	13	8	2	63	12	4	16
Dept. of Computer Sciences	0	0	0	3	0	38	2	3	63	5	3	8

Dept. of Mathematics	3	0	23	2	0	15	6	2	62	11	2	13
Dept. of Microbiology	2	1	23	1	5	46	1	3	31	4	9	13
Dept. of Physics	3	0	19	4	0	25	7	2	56	14	2	16
Dept. of Statistics	1	0	13	0	0	0	4	3	88	5	3	8
SUB-TOTAL	17	3	22	15	8	25	32	16	53	64	27	91
COLLEGE OF PLANT SCIENCE & CROP PRODUCTION												
Dept. of Crop Protection	4	0	33	3	0	25	4	1	42	11	1	12
Dept. of Horticulture	4	0	44	0	0	0	4	1	56	8	1	9
Dept. of Plant Breeding & Seed Technology	4	0	33	2	1	25	4	1	42	10	2	12
Dept. of Plant Physiology & Crop Production	3	0	27	2	0	18	5	1	55	10	1	11
Dept. of Soil Sciences & Land Management	2	0	25	2	1	38	3	0	38	7	1	8
SUB-TOTAL	17	0	33	9	2	21	20	4	46	46	6	52
COLLEGE OF VETERINARY MEDICINE												
Dept. of Veterinary Anatomy	0	0	0	1	0	25	2	1	75	3	1	4
Dept. of Veterinary Physiology	1	0	13	0	0	0	5	2	88	6	2	8
Dept. of Veterinary Microbiology	2	0	33	0	0	0	3	1	67	5	1	6
Dept. of Veterinary Pathology	1	0	25	1	0	25	2	0	50	4	0	4
Dept. of Veterinary Medicine and Surgery	1	1	20	1	0	10	5	2	70	7	3	10
Dept. of Veterinary Public Health	1	1	25	0	0	0	3	3	75	4	4	8
SUB-TOTAL	6	2	20	3	0	7.5	20	9	73	29	11	40

OTHER ACADEMIC DEPARTMENTS												
Library	2	1	21	1	1	14	5	4	64	8	6	14
RESDEC	2	0	33	0	2	33	2	0	33	4	2	6
AMREC	0	1	17	0	1	17	2	2	67	2	4	6
CENHURD	0	0	0	0	0	0	19	16	100	19	16	35
SUB-TOTAL	4	2	9.8	1	4	8	28	22	82	33	28	61
TOTAL	92	16	24	54	25	17	188	82	59	334	123	457

NUC STAFF MIX RATIO = Professor (20%); Senior Lecturer (35%); Others (45%)

Table 15: UNAAB NON-TEACHING STAFF – OCTOBER, 2009

GRADE LEVEL	ADMINISTRATIVE STAFF		TECHNICAL STAFF		SECRETARIAT STAFF		TOTAL	
	MALE	FEMALE	MALE	FEMALE	MALE	FEMALE	MALE	FEMALE
CONTISS 15	5	3	0	0	0	0	5	3
CONTISS 14	10	4	6	0	0	0	16	4
CONTISS 13	11	6	13	4	0	2	24	12
CONTISS 12	1	2	17	7	0	3	18	12
CONTISS 11	12	8	18	8	0	0	30	16
CONTISS 10	0	0	3	1	0	0	3	1
CONTISS 9	15	19	18	14	0	4	33	37
CONTISS 8	15	19	36	14	4	35	55	68
CONTISS 7	50	48	78	33	5	24	133	105
CONTISS 6	14	14	43	9	2	22	59	45
SUB-TOTAL	133	123	232	90	11	90	376	303
CONTISS 5	12	11	38	19	3	10	53	40
CONTISS 4	17	20	70	18	1	3	88	41
CONTISS 3	29	42	124	43	0	0	153	85
CONTISS 2	5	3	65	8	0	0	70	11
CONTISS 1	1	0	21	13	0	0	22	13
SUB-TOTAL	64	76	318	101	4	13	386	190
GRAND TOTAL	197	199	550	191	15	103	762	493

Figure 5

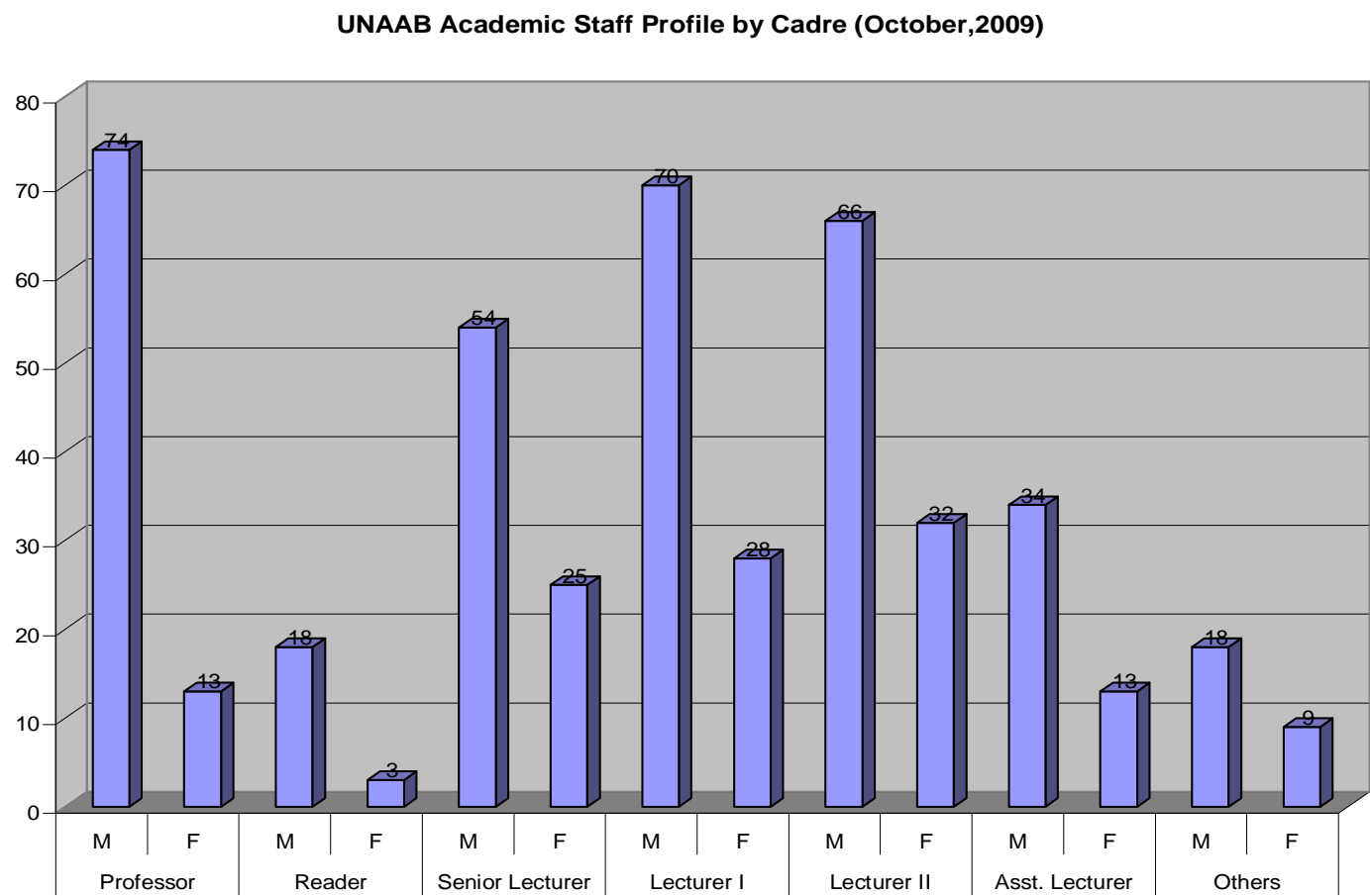


Figure 6

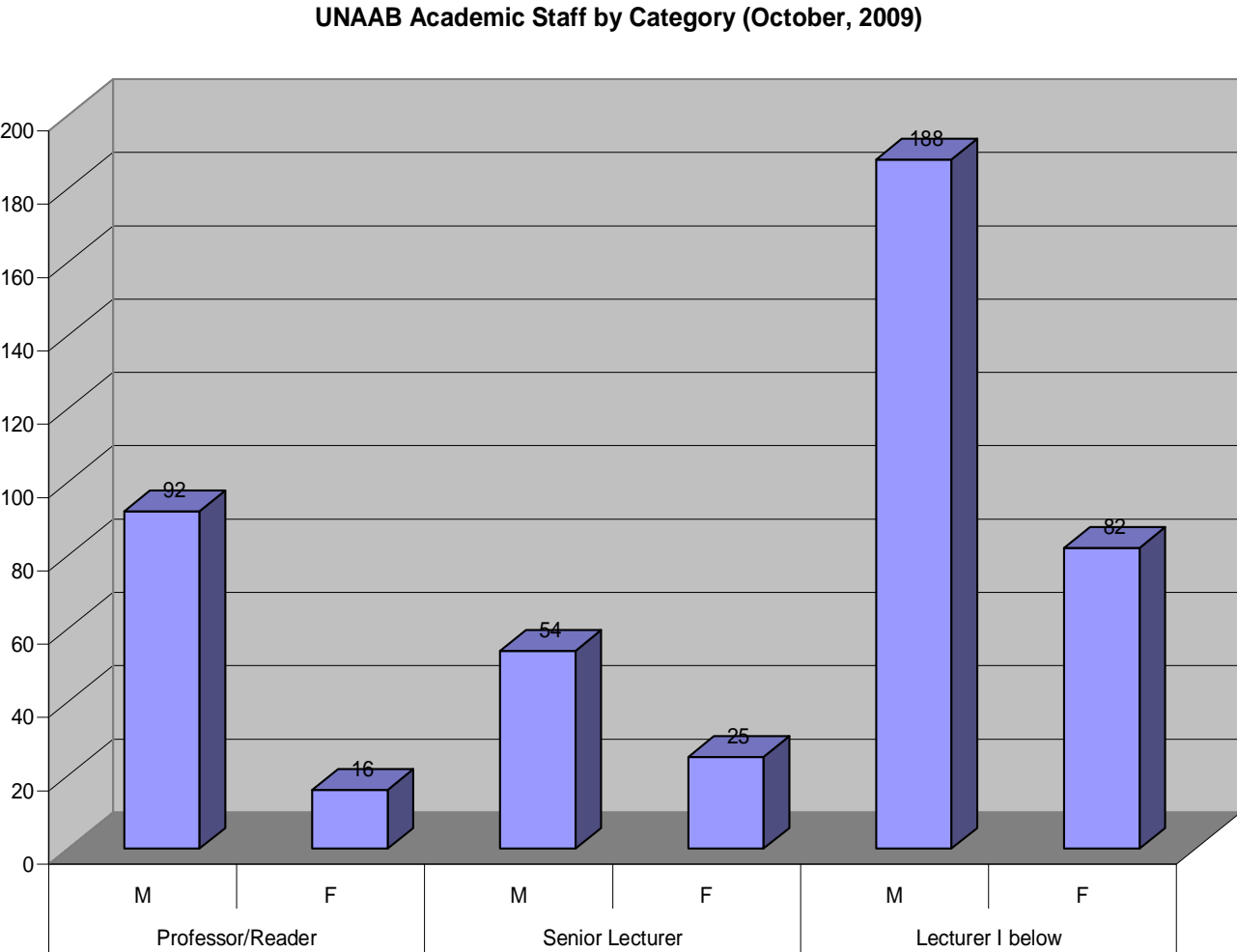
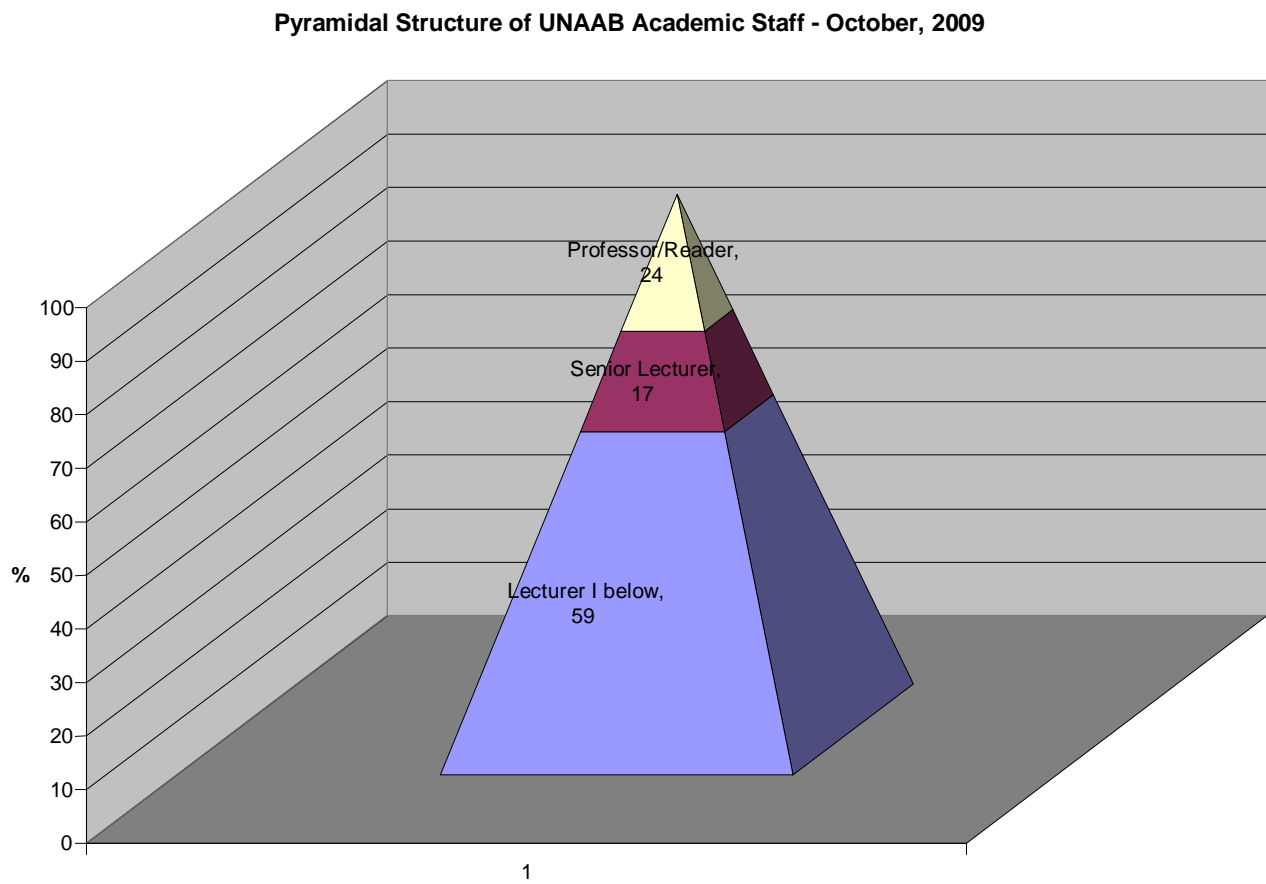
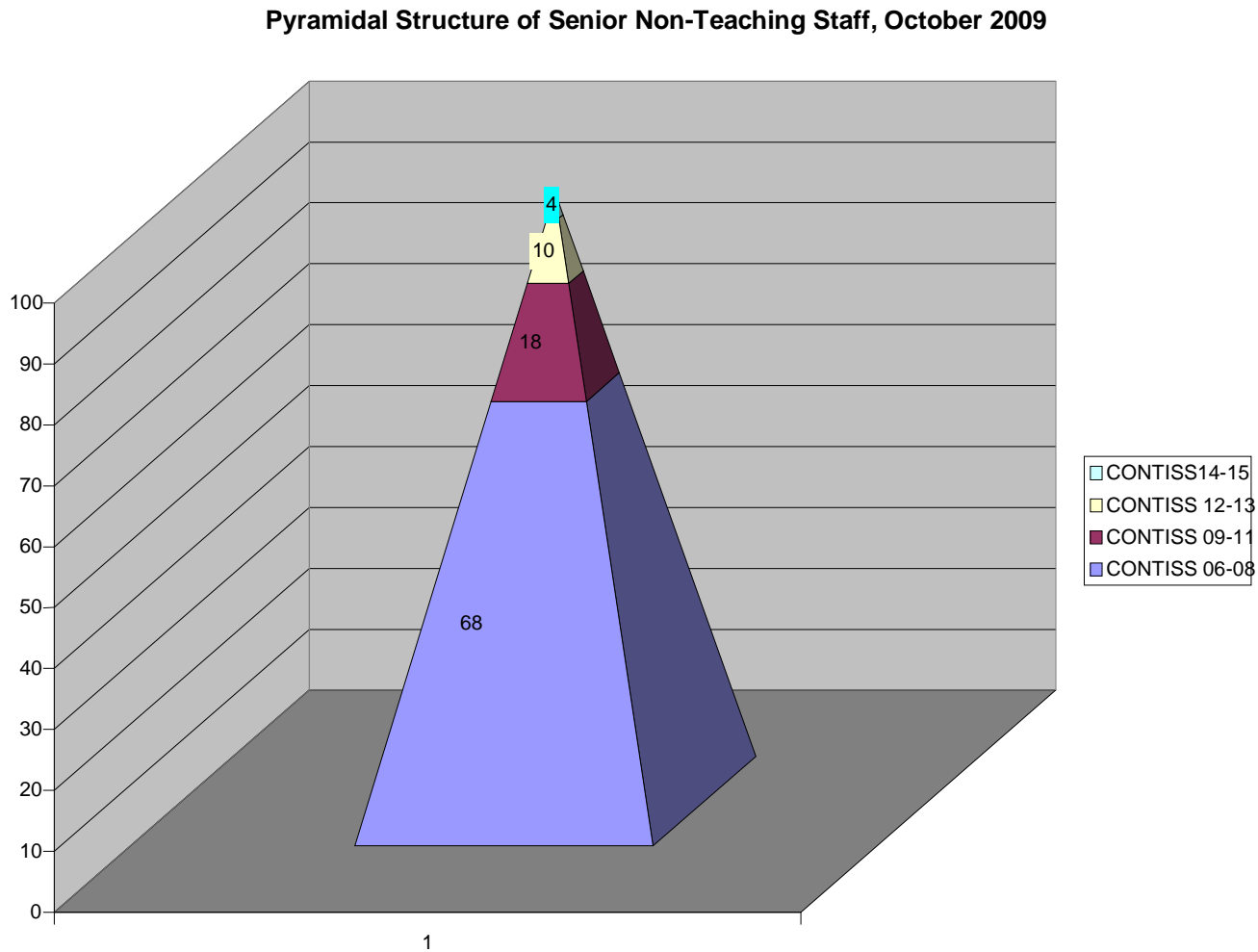


Figure 7



NUC RATIO = Professor (20%): Senior Lecturer (35%): Others (45%)

Figure 8



NUC’s Approved % Ratio for Senior Non Teaching Staff - 5:15:35:45

Figure 9

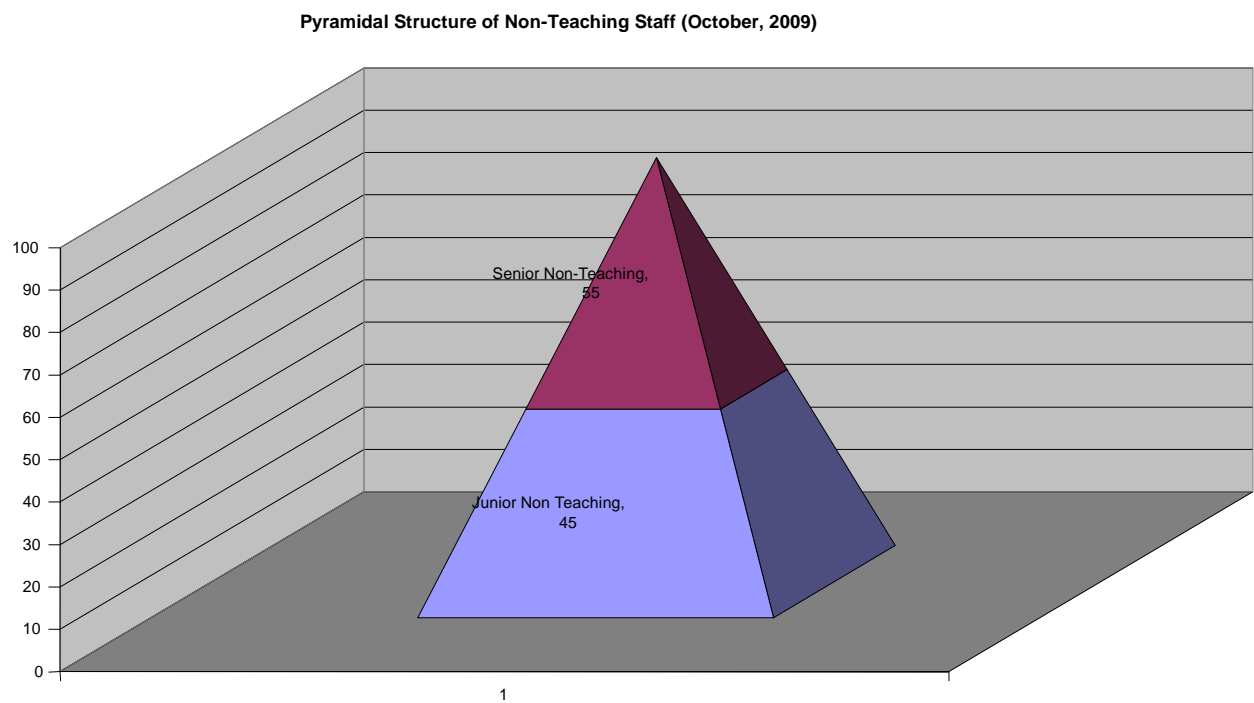


Table 16: NAMES OF PROFESSORS and READERS (October, 2009)

NAMES	RANK	E-MAIL ADDRESS & PHONE NO.	AREA OF SPECIALISATION
COLLEGE OF AGRIC MANAGEMENT AND RUAL DEVELOPMENT			
P A Okuneye	Professor	b_okuneye@yahoo.com +234-803-323-3230	Farm Mgt & Account
Akin Omotayo	Professor	akinjuly@yahoo.co.uk +234-803-722-3311	Agric Ext & Rural Soc.
M.T. Ajayi	Professor	akinwumi5253@yahoo.com +234-703-012-6840	Agric. Administration
Caroline A Afolami	Professor	steveafolami@yahoo.com +234-803-389-9539	Econs & Prod. Econs
S Momoh	Professor	siakamomoh2000@yahoo.com +234-803-721-5487	Cooperative & Farm Mgt
A B Aromolaran	Professor	+234-806-880-2209	Prod. Econs, Farm Mgt. & Food policy
S O Apantaku	Professor	samapantaku@yahoo.com +234-803-864-8563	Agric. Extension & Rural Dev.
Bolanle I Akeredolu-Ale	Professor	baale95@yahoo.com +234-803-829-6518	Sociolinguistic
A. O. Dipeolu	Professor	waledipe@gmail.com +234-803-318-1553	Quantum Economics
O J Ladebo	Professor	lolugbenga@yahoo.com +234-806-982-1249	Agric. Ext. Mgt & org
J O Shopeju	Reader	j.o.sopeju12@yahoo.com +234-803-712-5917	Sociology & Criminology
A. Oloruntoba	Reader	yomitoba@hotmail.com +234-803-323-1761	Rural Ext. Train. & Gender
COLLEGE OF FOOD SCIENCE AND HUMAN ECOLOGY			
S O Awonorin	Professor	awonorin@yahoo.com +234-803-3951522	Mass transfer
O B Oyewole	Professor	oyewoleb@yahoo.com +234-803-335-1814	Food Microbiology

Clara R B Oguntona	Professor	claraoguntona@yahoo.co.uk +234-803-378-5043	Nutrition & Dietetics
Sylvia V A Uzochukwu	Professor	suzochi@yahoo.com +234-803-353-1178	Food Biotechnology
L O Sanni	Professor	lateef_z@yahoo.com +234-803-346-9882	Food Science & Tech.
Folake O Henshaw	Professor	henofepc@yahoo.com +234-803-405-6311	Food processing & preservation
T M Akinwunmi	Reader	tundemakinwumi@yahoo.com +234-803-308-5822	Textile
M. A. Idowu	Reader	idowumchl@yahoo.com +234-803-912-4327	Food Science & Tech.
Ibiyemi O. Olayiwola	Reader	ibisumbo@yahoo.com +234-803-712-2280	Human Nutrition
COLLEGE OF ANIMAL SCIENCE AND LIVESTOCK PRODUCTION			
I F Adu	Professor	foluadu@yahoo.com +234-805-439-6281	Ruminant Animal Production
O. O. Balogun	Professor	femibalogun54@yahoo.com +234-703-414-7636	Animal Biochemistry
E B Oguntona	Professor	baahtunde@yahoo.co.uk +234-803-422-6421	Biochemistry & Nutrition
O A Osinowo	Professor	xmay565@yahoo.com +234-803-318-7110	Animal Science
Ayoka O Adebambo	Professor	fbambo0412@yahoo.com +234-803-337-4386	Animal Science
C F I Onwuka	Professor	chysonka@yahoo.com +234-803-337-6854	Ruminant Animal Nutrition
Daisy Erubetine	Professor	daisy@erubetine.com +234-803-312-7433	Monogastric Animal Nutrition
A B J Aina	Professor	ainabj@yahoo.com +234-703-108-4497	Ruminant Animal Production
S S Abiola	Professor	abiolass@yahoo.com +234-803-809-3789	Monogastric Animal Production

A M Bamgbose	Professor	bamamu@yahoo.com +234-803-334-3234	Monogastric Animal Nutrition
C O N Ikeobi	Professor	ikeobi@yahoo.co.uk +234-803-471-8902	Animal Breeding
O S Onifade	Professor	onifadefemi@yahoo.com +234-803-716-3500	Forage & Agronomy
A O Fanimu	Professor	fanitunde_amos@yahoo.com +234-803-831-4219	Monogastric animal
O O Oduguwa	Professor	oduguwa2002@yahoo.com +234-803-374-1112	Agric biochemistry & Animal Nutrition
M O Ozoje	Professor	miczoje@yahoo.com +234-803-716-3501	Animal Science
O. Onagbesan	Professor	onagbesanok@yahoo.com +234-807-776-6064	Animal Physiology
Alaba O Jolaoso	Professor	ajolaosho@yahoo.com +234-803-305-0551	Pasture Agronomy
COLLEGE OF ENVIRONMENTAL RESOURCES MANAGEMENT			
J A Okojie	Professor		Forest Mgt & Biometrics
O Martins	Professor	martins@skannet.com +234-803-333-8534	Hydrology
S A Onadeko	Professor	dekson@yahoo.com +234-803-711-9510	Wildlife Ecology & Mgt./park
N J Bello	Professor	njbello2003@yahoo.com +234-805-635-2008	Climatology & Agrometeorology
S A Oluwalana	Professor	samoluwalana@yahoo.co.uk +234-803-715-8068	Forest resources
T A Arowolo	Professor	tarowolo@yahoo.com +234-803-725-1777	Analytical & Environ Chemistry
S O Otubusin	Professor	samotubusin@yahoo.com +234-803-486-9816	Aquaculture & Fisheries Mgt
A M Aduradola	Professor	amaduradola@yahoo.com +234-803-330-7309	Silviculture & Agro-forestry

M O Adedire	Professor	depodire@yahoo.com +234-803-337-7210	Silviculture & Agroforestry
O Bamgbose	Professor	kaybam2002@yahoo.com +234-803-335-3507	Analytical Chemistry
G N O Ezeri	Professor	ezeri2000@yahoo.com +234-803-724-0306	Fish pathology
W.O. Alegbeleye	Reader	segunalegbeleye@yahoo.com +234-803-382-4292	Fish Nutrition
I. T. Omoniyi	Reader	itomoniyi@yahoo.com +234-803-809-3831	Fisheries Biology
Udolisa R. E. K.	Reader	+234-803-329-2271	Gear Technology
Y Akegbejo-Samsons	Reader	samsons56@yahoo.co.uk +234-803-5021748	Aquaculture /Coastal water Mgt

COLLEGE OF PLANT SCIENCE AND CROP PRODUCTION

S T O Lagoke	Professor	pascon1@yahoo.com +234-803-337-1043	Agronomy & Weed Science
M T Adetunji	Professor	omotade09@yahoo.com +234-803-331-5104	Soil Chemistry
O J Ariyo	Professor	ariyojo@yahoo.com +234-803-346-4163	Plant breeding
F O Olasantan	Professor	olasantan@yahoo.com +234-803-3903146	Cropping system & Olericulture
K A Okeleye	Professor	professorokeleye@yahoo.co.uk +234-803-454-1894	Agronomy & Crop physiology
A Y A Adeoti	Professor	yahayaadeoti@yahoo.com +234-803-211-3797	Plant pathology & Mycology
S O Afolami	Professor	steveafolami@yahoo.com +234-805-240-7309	Nematology
I. O. O. Ayelaagbe	Professor	ola_olu57@yahoo.com +234-803-381-5606	Cropping System & Pomology
P. O. Adetiloye	Professor	poadetiloye@yahoo.com +234-803-407-3647	Plant Physiology

O B Kehinde	Professor	tundekehinde04@yahoo.com +234-803516-9778	Plant Breeding
F K Salako	Professor	kolawolesalako@hotmail.com +234-803-346-8456	Soil physics & soil conservation
J G Bodunde	Professor	bodundegoke@yahoo.com +234-803-347-9260	Environ Physiology & Horticulture
M O Ajala	Professor	wole_mike@yahoo.com +234-803-335-3942	Seed Technology
A O Enikuomehin	Professor	adeenikuomehin@yahoo.com +234-803-335-9727	Plant pathology & Mycology
V.I.O. Olowe	Professor	owebaba@yahoo.com +234-803-392-8111	Agronomy/Crop Physiology
J.A. Adigun	Professor	josadig2007@yahoo.com +234-806-245-1765	Agronomy/Weed science
K A Elemo	Reader	elemokehinde@hotmail.com +234-803-552-6601	Agro/Cropping system
G O Olatunde	Reader	dr_golat@yahoo.com +234-803-335-7092	Entomology
D K Ojo	Reader	dkojo58@yahoo.com +234-803-812-3338	Plant Breeding
M. A. O. Okelana	Reader	maokelana@yahoo.com +234-803-474-8869	Crop Physiology
Dupe Akintobi-Adeyemo	Reader	dakintobia@yahoo.com +234-803-347-9638	Seed Technology
COLLEGE OF ENGINEERING			
E. S. A. Ajisegiri	Professor	ajisegiri@yahoo.com +234-803-240-7445	Agric. Engineering
P O Aiyedun	Professor	laiyedun_494@yahoo.com +234-802-316-2184	Metallurgy and Nuclear Engineering
B.A. Adewunmi	Professor	babatunde_adewumi@yahoo.com +234-803-388-5382	Agric./Food Engineering
O.A. Ajayi	Professor	oajayi@oauife.edu.ng +234-803-406-0643	Agric. Engineering

M.A. Waheed	Professor	akindoye@yahoo.com +234-806-120-2421	Mechanical Engineering
S. B. Adejuyigbe	Professor	samueladejuigbe@yahoo.com +234-803-474-0386	Mechanical Engineering
COLLEGE OF VETERINARY MEDICINE			
E B Otesile	Professor	tundeotesile@yahoo.co.uk +234-803-723-0158	Food Animal Medicine
Morenike A Dipeolu	Professor	olulase@yahoo.com +234-803-344-4258	Veterinary Public Health
V.O. Sekoni	Professor		Theriogenology
J. O. Oyewale	Professor	oyewalejohnson2003@yahoo.com +234-802-325-6541	Veterinary Haemtology
D D Alonge	Professor	alongeb2003@yahoo.com +234-803-404-1158	Public Health
O B Kasali	Professor	kasaliolajide@hotmail.com +234-806-749-5438	Veterinary Pathology
H.O. Nottidge	Professor	HelenNottidge@yahoo.com +234-802-325-4656	Small Animal Medicine
M. A. Oyekunle	Reader	maoyekunle@yahoo.co.uk +234-806-014-0512	Veterinary Microbiology
COLLEGE OF NATURAL SCIENCES			
F O Bamiro	Professor	fobamiro@yahoo.com +234-803-337-9697	Analytical chemistry
I C Eromosele	Professor	iceromosele@yahoo.com +234-803-343-0064	Polymer chemistry
M Kadiri	Professor	profkadiri@yahoo.co.uk +234-703-790-8688	Plant physiology
O E Asiribo	Professor	asiribo@yahoo.com +234-803-352-6707	Experimental Design
D A Agboola	Professor	+234-803-407-3824	Plant physiology

M S Ayodele	Professor	segmuy1@yahoo.com +234-802-987-9814	Plant systematics reproductive biology & cytogenetics
Elizabeth A. Balogun	Professor	ea-balogun@yahoo.com +234-803-358-9068	Biochemical Toxicology
O O Odukoya	Professor	oodukoya@yahoo.com +234-806-642-2538	Analytical Chemistry
Mobolaji O Bankole	Professor	aadmokole@yahoo.co.uk +234-805-158-7047	Food/Industrial microbiology/ Biotechnology
I Akpan	Professor	iyakpan@yahoo.com +234-803-337-4259	Food/Industrial microbiology/ Biotechnology
T O S Popoola	Professor	topsipop@yahoo.com +234-803-328-0991	Applied microbiology
Cathrine O Eromosele	Professor	yemisiero@yahoo.com +234-803-337-6937	Industrial Chemistry
O Ademuyiwa	Professor	adelad2@yahoo.com +234-803-357-5238	Biochemical Toxicology
A B Idowu	Professor	tomiwo2@gmail.com +234-805-308-0184	Animal Physiology
J A Olowofela	Reader	jaolowofela@yahoo.com +234-803-323-2226	Solid Earth Physics
A.O. Mustapha	Reader	amudumustapha@gmail.com +234-806-931-4602	Physics
J. A. Oguntuase	Reader	oguntuase@yahoo.com +234-803-721-8152	Theory of inequalities
O. J. Adeniran	Reader	adeniranoj@unaab.edu.ng +234-803-319-4406	Theory of loops
A.A.A. Agboola	Reader	aaaolazoo@yahoo.com +234-803-381-6099	Theory of Fuzzy Sets

Table 17: UNAAB STAFF PROFILE AS AT OCTOBER, 2009

	CADRE	M	F	TOTAL
ACADEMIC	UASS			
	VC & Ex VC	3	0	3
	07	74	13	87
	06	18	3	21
	05	54	25	79
	04	70	28	98
	03	66	32	98
	02	34	13	47
	01	18	9	27
	SUB TOTAL	334	123	457
SENIOR NON- TEACHING	CONTISS	M	F	TOTAL
	15	5	3	8
	14	16	4	20
	13	24	12	36
	12	18	13	31
	11	29	16	45
	10	3	1	4
	09	33	37	70
	08	54	70	124
	07	133	103	236
	06	60	41	101
	SUB TOTAL	375	300	675
JUNIOR NON- TEACHING	HATISS	M	F	TOTAL
	05	53	40	93
	04	83	41	124
	03	148	87	235
	02	70	11	81
	01	21	23	44
	SUB TOTAL	375	202	577
	GRAND TOTAL	1084	625	1709