



FEDERAL UNIVERSITY OF AGRICULTURE
ABEOKUTA, OGUN STATE, NIGERIA

STATISTICAL DIGEST

5th Edition

DECEMBER, 2011

Published by

**ACADEMIC PLANNING UNIT
Vice-Chancellor's Office**

FOREWORD

Record keeping, which dated back to about 3000 B.C., forms an essential tool for planning and administration of resources. The effectiveness of an organisation depends on the availability and utilisation of reliable data. The importance of compact collections of data to the progress of the Federal University of Agriculture, Abeokuta cannot be over emphasised hence, the publication of this annual Statistical Digest of the University since 2007.

This 5th edition of the FUNAAB Statistical Digest is the latest update of the University Statistics. It would be very useful and of particular interest to all stakeholders of the University especially, students, staff, parents, researchers in education, educational administrators, government and non-governmental organisations and international agencies.

The Academic and Non-Teaching Units that provided raw data for this production are appreciated. I also commend the dedication and commitment of the Academic Planning Unit in production of this Statistical Digest in the last five years.

Professor Ohuwafemi Olaya Balogun

Vice-Chancellor

Federal University of Agriculture, Abeokuta

OVERVIEW

The importance of data as planning tool in any organisation cannot be underestimated. Conscious efforts must therefore be made to preserve them.

The Federal University of Agriculture, Abeokuta (FUNAAB) continues to grow in leaps and bounds under the indefatigable leadership of our Vice-Chancellor, Professor Oluwafemi Olaiya Balogun, as a result of which a review of the University basic statistics is essential for record purposes. This edition of the Statistical Digest presents five (5) year data (2006/2007 to 2010/2011) on the performance index of various units of the University such as students, staff, health, financial statistics, University library resources and physical facilities. Included in this edition are the list of inaugural lectures delivered in the University from the first one in 1994 to 2011 and the number of departmental courses in the University, which make this publication an improvement over the previous ones. The data are well outlined for ease of reference.

The Academic Planning Unit appreciates the efforts of various Colleges, Departments, Centres and Units in providing raw data which were processed for this publication even at the shortest notice.

Professor M.A. Waheed

Director, Academic Planning Unit
FUNAAB

Table of Contents

Overview - - - - -	iii
Table of Contents - - - - -	iv
List of Tables - - - - -	v
List of Figures - - - - -	vii
Acronyms - - - - -	viii
Introduction - - - - -	x
SECTION 1 - - - - -	1
Institutional Information - - - - -	1
Administrative Information - - - - -	1
Academic Programmes - - - - -	2
SECTION 2 - - - - -	7
Students' Statistics - - - - -	7
Students' Enrolment - - - - -	7
Graduate Output - - - - -	23
SECTION 3 - - - - -	33
Staff Statistics - - - - -	33
SECTION 4 - - - - -	54
University Library Resources - - - - -	54
SECTION 5 - - - - -	56
University Health Statistics - - - - -	56
SECTION 6 - - - - -	59
Financial Statistics - - - - -	59
SECTION 7 - - - - -	60
Statistics of Physical Facilities - - - - -	60

List of Tables

Table	Title	Page
1	Institutional Information as at December, 2011 - - -	1
2	Undergraduate Academic Programmes and their NUC Accreditation Status as at 2010/2011 Academic Session- - - -	2
3	Postgraduate Academic Programmes as at 2010/2011 Academic Session -	3
4	Summary of Academic Programmes as at 2010/2011 Academic Session First Choice UME Applications and New Entrant Enrolment by Department for 2008/2009 to 2010/2011 Academic Sessions -	6 7
6	Geographical Distribution of Fresh Undergraduate Students by Gender from 2005/2006 to 2010/2011 Academic Sessions- -	8
7	Geographical Distribution of Fresh Undergraduate Students by Gender and Discipline for 2010/2011 Academic Session- - -	9
8	Fresh Undergraduate Students' Enrolment by Gender and Discipline from 2005/2006 to 2010/2011 Academic Sessions - - -	10
9	Total Undergraduate Students' Enrolment by Gender and Discipline from 2005/2006 to 2010/2011 Academic Sessions -	10
10	Summary of Total Students Enrolment by Mode of Study from 2005/2006 to 2010/2011 Academic Sessions - - -	11
11	UNAAB Students Enrolment by Mode of Study for 2010/2011 Academic Session - - - - - - - -	11
12	Undergraduate Student's Headcount Enrolment by Gender and Level for 2010/2011 Academic Session - - - - - - - 13	13
13	Geographical Distribution of Undergraduate Students from 2006/2007 to 2010/2011 Academic Sessions - - - -	15
14	Full Time Equivalent and Carrying Capacity for 2010/2011 Academic Session - - - - - - - -	17
15	Number of Departmental Courses by Level for 2010/2011 Academic Session - - - - - - - -	19
16	Geographical Distribution of Undergraduate Students by Discipline and Gender for 2010/2011 Academic Session- - -	21
17	Postgraduate Students' Enrolments for 2010/2011 Academic Session	22

Table	Title	Page
18	Graduate Output by Discipline from 2006/2007 to 2010/2011 Academic Sessions - - - - -	23
19	Graduate Output by Gender and Class of Degree for 2010/2011 Academic Session - - - - -	25
20	Graduate Output by Gender and Class of Degree for 2009/2010 Academic Session - - - - -	27
21	Graduate Output by Class from 2005/2006 to 2010/2011 Academic Sessions - - - - -	29
22	Postgraduate Output by Gender and Class of Degree for 2009/2010	32
23	Academic Staff by Rank and Gender as at December, 2011 -	33
24	Academic Staff Qualification as at December, 2011 -	34
25	Percentage of Academic Staff with PhD as at December, 2011.	36
26	Number of Inaugural Lectures Delivered from 2007 to 2011-	39
27	Senior Non-Teaching Staff as at December, 2011 -	39
28	Junior Staff as at December, 2011 -	39
29	Non-Teaching Staff by Category and Gender from 2007 to 2011	43
30	List of Inaugural Lectures Delivered from 1994 to 2011 -	44
31	UNAAB Staff Profile as at December, 2011 -	46
32	Geographical Distribution of Staff as at December, 2011-	47
33	Names of Professors and Readers as at December, 2011 -	48
34	Use of Library Services from 2006/2007 to 2010/2011 Academic Sessions - - - - -	54
35	Actual Library Resources from 2006/2007 to 2010/2011 Academic Sessions - - - - -	54
36	Total Number of Patients Treated at the University Health Services by Category from 2006/2007 to 2010/2011 Academic Sessions - - - - -	56
37	Emergency Cases Treated at the University Health Services by Category from 2006/2007 to 2010/2011 Academic Sessions - - - - -	57

Table	Title	Page
38	Statistics of Immunization and Family Planning given at the University Health Services from 2006/2007 to 2010/2011 Academic Sessions - - - - -	58
39	Laboratory Services at the University Health Services from 2006/2007 to 2010/2011 Academic Sessions - - -	58
40	Revenue/Expenditure of the University from 2006/2007 to 2010/2011 Academic Sessions - - - - -	59
41	List of Projects Executed from 2005 to 2011 - - -	60

List of Figures

Figure	Title	Page
1	Students' Enrolment by Mode of Study in Percentage for 2010/2011 Academic Session - - - - -	12
2	FUNAAB Undergraduate Students' Growth Rate from 1988/1989 to 2010/2011 Academic Sessions- - - - -	12
3	Undergraduate Students' Enrolment by Department for 2010/2011 Academic Session - - - - -	15
4	FUNAAB Graduate Output-First Degree from 2005 to 2010- -	23
5	FUNAAB Undergraduate Graduation Pattern from 1989/1990 to 2010/2011 Academic Sessions - - - - -	24
6	Graduate Output by Class of Degree and Gender for 2010/2011 Academic Session - - - - -	26
7	Graduate Output by Class of Degree and Gender for 2009/2010 -	28
8	First Class Graduates since Inception from 1989/1990 to 2010/2011 Academic Sessions - - - - -	29
9	Graduate Output by Class from 2006/2007 to 2010/2011 Academic Sessions - - - - -	30
10	Postgraduate Students' Output from 1998/1999 to 2009/2010 Academic Sessions - - - - -	30
11	Graduation Pattern- Postgraduate School from 1998 to 2009- -	31
12	Postgraduate Student Output for 2009/2010 Academic Session- -	31
13	Pyramidal Structure of Academic Staff as at December, 2011 -	33
14	Proportion of Academic Staff with and Without PhD as at December, 2011 - - - - -	36
15	Academic Staff Mix by Rank as at December, 2011- - -	37
16	Academic Staff Mix by Rank in Percentages as at December, 2011-	37
17	Academic Staff by Gender as at December, 2011 - - -	38
18	Academic Staff by Age Distribution as at December, 2011 - -	38
19	Non-Teaching Staff by Cadre and Gender as at December, 2011 -	40
20	Senior Non-Teaching Staff as at December, 2011 - - -	40
21	Age Distribution of Senior Non-Teaching Staff as at December, 2011 -	41

Figure	Title	Page
22	Junior Non-Teaching Staff as at December, 2011 - - -	41
23	Age Distribution for Junior Staff as at December, 2011 - -	43
24	Percentage Distribution of Non-Teaching Staff by Cadre and Gender as at December, 2011-- - - -	43
25	Staff by Category for 2010/2011 Academic Session - - -	46
26	University Library Holdings as at December, 2011 - - -	55
27	Patients Treated at the University Health Services in Percentages from 2006/2007 to 2010/2011 Academic Sessions - - -	56
28	Patients Treated at the University Health Services by Category in 2010/2011 Academic Session - - -	57
29	Emergency Cases Treated at the University Health Services from 2006/2007 to 2010/2011 Academic Sessions - - -	58
30	Number of UNAAB Physical Projects from 2005 to 2011 - -	60

ACRONYMS

ABG	Department of Animal Breeding and Genetics
AEFM	Department of Agricultural Economics and Farm Management
AERD	Department of Agricultural Extension and Rural Development
AGAD	Department of Agricultural Administration
AGE	Department of Agricultural Engineering
ANN	Department of Animal Nutrition
ANP	Department of Animal Physiology
APH	Department of Animal Production and Health
AQFM	Department of Aquaculture and Fisheries Management
AMREC	Agricultural Media, Research and Extension Centre
BCH	Department of Biochemistry
BIO	Department of Biological Sciences
CGNS	Department of Communication and General Studies
CHM	Department of Chemistry
COLAMRUD	College of Agricultural Management and Rural Development
COLANIM	College of Animal Science and Livestock Production
COLENG	College of Engineering
COLERM	College of Environmental Resources Management
COLFHEC	College of Food Science and Human Ecology
COLNAS	College of Natural Sciences
COLPLANT	College of Plant Science and Crop Production
COLVET	College of Veterinary Medicine
CPT	Department of Crop Protection
CSC	Department of Computer Science
CVE	Department of Civil Engineering
ELE	Department of Electrical/Electronic Engineering
EMT	Department of Environmental Management and Toxicology
FSM	Department of Foodservice and Tourism
FST	Department of Food Science and Technology
FWM	Department of Forestry and Wildlife Management
HRT	Department of Horticulture
HSM	Department of Home Science and Management

IFSERAR	Institute of Food Security, Environmental Resources and Agricultural Research
INHURD	Institute of Human Resources Development
MCB	Department of Microbiology
MCE	Department of Mechanical Engineering
MTS	Department of Mathematics
NTD	Department of Nutrition and Dietetics
PBST	Department of Plant Breeding and Seed Technology
PHS	Department of Physics
PPCP	Department of Plant Physiology and Crop Production
PRM	Department of Pasture and Range Management
SSLM	Department of Soil Sciences and Land Management
STS	Department of Statistics
VAT	Department of Veterinary Anatomy
VMP	Department of Veterinary Microbiology and Parasitology
VMS	Department of Veterinary Medicine and Surgery
VPH	Department of Veterinary Public Health and Reproduction
VPP	Department of Veterinary Physiology and Pharmacology
VPT	Department of Veterinary Pathology
WRMA	Department of Water Resource Management and Agrometeorology

INTRODUCTION

This fifth edition of FUNAAB Statistical Digest has built on the fourth edition, as it presents statistical information on the University for a stretch of five years (2006/2007 to 2010/2011).

This edition has seven sections. Section one presents Institutional Information, Section two Information on Students' Statistics and Section three Staff Statistics. Sections four, five and six present information on the University Library Resources, University Health Statistics and Financial Statistics respectively, while section seven deals with the Statistics on Physical Facilities.

There is no doubt that the information therein will be very useful to researchers and all stakeholders in the field of education. Specifically, this edition will be of immense value to students, staff, parents, administrators and relevant agencies.

Academic Planning Unit

SECTION 1

INSTITUTIONAL INFORMATION

1.1 ADMINISTRATIVE INFORMATION

Table 1: Institutional Information as at December, 2011

Name of Institution	Federal University of Agriculture, Abeokuta
Year of Establishment	1988
Ownership	Federal Government of Nigeria
Name and Address of Proprietor	Federal Government of Nigeria. c/o Federal Ministry of Education
Name and Address of Chancellor	Professor Obi Chike Edozien The Asagba of Asaba
Name and Address of Pro-Chancellor	Chief L.A.O. Osayemi losayemi@yahoo.com
Name and Address of Vice-Chancellor	Professor Oluwafemi Olaiya Balogun Unaab_vc@yahoo.com +2347034014747, +2347034147636
Name and Address of Deputy Vice-Chancellor (Academic)	Professor T.A. Arowolo tarowolo@yahoo.com +2348037251777
Name and Address of Deputy Vice-Chancellor (Development)	Professor F.K. Salako kolawolesalako@hotmail.com +2348060810337
Name and Address of Ag. Registrar	Mrs. C.B. Kuforiji registrar@unaab.edu.ng +2348032351518
Name and Address of Ag. Bursar	Mr. M.O. Ilesanmi olusolaile sanmi@yahoo.com +2348038405558
Name and Address of Librarian	Dr. (Mrs.) Salaam Atagboola05@yahoo.com +2348033377644
Name and Address of Director, Academic Planning	Professor M.A. Waheed waheedma@unaab.edu.ng akindoye@yahoo.com +2348061202421
Institution website	www.unaab.edu.ng
Institution Telephone Number	(039) 2452901, +2347034014747, +2348033199414
Institution e-mail	registrar@unaab.edu.ng

L2 ACADEMIC PROGRAMMES

Table 2: Undergraduate Academic Programmes and their NUC Accreditation Status as at 2010/2011 Academic Session

S/N	College/ Department	Year of Commencement	Last Accreditation	Accreditation Status
A	COLAMRUD			
1	*AEFM	1988	2006	Full Accreditation
2	*AERD	1988	2006	Full Accreditation
3	AGAD	2009	Resource visitation, 2011	Approved
B	COLANDM			
4	*ABG	1988	2006	Full Accreditation
5	*ANN	1988	2006	Full Accreditation
6	*ANP	2006	2006	Full Accreditation
7	*APH	1988	2006	Full Accreditation
8	*PRM	1988	2006	Full Accreditation
C	COLENG			
9	AGE	2000	2008	Full Accreditation
10	ELE	2000	2008	Interim Accreditation
11	CVE	2000	2008	Interim Accreditation
12	MCE	2000	2008	Full Accreditation
D	COLERM			
13	*AQFM	1993	2005	Full Accreditation
14	*EMT	1988	2008	Full Accreditation
15	*FWM	1988	2006	Full Accreditation
16	*WRMA	1988	2008	Full Accreditation
E	COLFHEC			
17	*FST	1982	2005	Full Accreditation
18	*HSM	1988	2006	Full Accreditation
19	*NTD	2004	2008	Full Accreditation
20	FSM	2009	Resource visitation, 2011	Approved
F	COLNAS			
21	*BCH	2000	2005	Full Accreditation
22	*BIO	1988	2005	Full Accreditation
23	*CHM	1988	2005	Full Accreditation
24	*CSC	2004	2005	Full Accreditation
25	*MTS	1988	2005	Full Accreditation
26	*MCB	2002	2005	Full Accreditation
27	*PHS	1988	2005	Full Accreditation
28	*STS	2004	2005	Full Accreditation
G	COLPLANT			
29	*CPT	1988	2006	Full Accreditation
30	*HRT	1988	2006	Full Accreditation
31	*PBST	1988	2006	Full Accreditation
32	*PPCP	1993	2006	Full Accreditation
33	*SSLM	1988	2006	Full Accreditation
H	COLVET			
34	VAT	2000	2008	Full Accreditation
35	VPP	2000	2008	Full Accreditation
36	VMP	2000	2008	Full Accreditation
37	VPT	2000	2008	Full Accreditation
38	VMS	2000	2008	Full Accreditation
39	VPH	2000	2008	Full Accreditation

*Also run on part-time

Table 3: Postgraduate Academic Programmes as at 2010/2011 Academic Session

S/N	Department/ Undergraduate Programme	Main Postgraduate Programme	Year Established
A	COLAMRUD		
1	AEFM	M Agric. and PhD (Agricultural Economics and Farm Mgt.)	1992
2	AERD	M Agric. and PhD (Agricultural Extension and Rural Development)	1993
3	AGAD		
4	CGNS	PGD and Masters in Communication Studies PGD and Masters in Communication Development	
B	COLANIM		
5	ABG	M Agric. and PhD (Animal Breeding and Genetics)	1998
6	ANN	M Agric. and PhD (Animal Nutrition)	1993
7	ANP	M Agric. and PhD (Animal Reproductive Physiology)	2006
8	APH	M Agric. and PhD (Non-ruminant Production) M Agric. and PhD (Ruminant Production) M Agric. and PhD (Livestock System) PGD (Poultry Production) PGD (Meat Processing)	1993 1993 1993 2001 2001
9	PRM	M Agric. and PhD (Pasture and Range Management)	2003
C	COLENG		
10	AGE	PGD, M Eng. and PhD (Agricultural Engineering)	2008
11	CVE	M Eng. and PhD (Civil Engineering)	2008
12	ELE	M Eng. and PhD (Electrical/Electronic Engineering)	2009
13	MCE	PGD, M Eng. and PhD (Mechanical Engineering)	2008
D	COLERM		
14	AQFM	MAF and PhD (Aquaculture and Fish Management) PDF (Aquaculture and Fish Management)	1995 2000
15	EMT	MEM (Environmental Management) MEMP (Environmental Management and Protection)	2007 1999
16	FWM	Masters and PhD (Forest Ecology) Masters and PhD (Forest Economics and Management) Masters and PhD (Agro-forestry) Masters and PhD (Forest Biometrics) Masters and PhD (Wildlife Management)	1992 1992 1992 1992 1992

S/N	Department/ Undergraduate Programme	Main Postgraduate Programme	Year Established
	FWM	Masters and PhD (Wildlife Production and Domestication)	1992
		Masters and PhD (Park Interpretation and Extension)	1992
		Masters and PhD (Wood Science)	1992
17	WRMA	MSc. and PhD (Water Resources)	
		MSc. and PhD (Agro meteorology)	
E	COLFHEC		
18	FST	MSc. and PhD in: -Food Processing and Storage Tech	1993
		-Food Microbiology / Biotechnology	1993
		-Food Quality Control/Assurance	1993
		-Food Engineering	1993
19	HSM	MSc. Clothing and Textile	1993
		PhD Clothing and Textile	2004
20	NTD	MSc. and PhD in Nutrition and Dietetics	2004
21	FSM		
F	COLNAS		
22	BCH	MSc. and PhD Biochemistry	2002
23	BIO	MSc. and PhD Botany(Plant Physiology)	1995
		MSc. and PhD Botany (Plant Taxonomy)	1997
		MSc. and PhD Botany (Cytology and Cytogenetics)	1998
		MSc. and PhD Zoology (Parasitology)	1995
		MSc. and PhD Zoology (Animal Physiology)	1998
		MSc. and PhD Zoology (Entomology)	1998
		PGD (Biological Science)	2008
24	CHM	MSc. and PhD in: -Analytical Chemistry	2006
		-Physical Chemistry	2008
		-Industrial Chemistry	2006
25	CSC	MSc. and PhD (Computer Science)	1999
26	MCB	MSc. and PhD in: -Medical and Public Health	2005
		-Food and Industrial Microbiology	1989
		-Environmental Microbiology	1989
		-Agric Biotechnology	2009

S/N	Department/ Undergraduate Programme	Main Postgraduate Programme	Year Established
27	MTS	MSc. and PhD (Mathematics)	1988
28	PHS	MSc. and PhD in Environmental Physics Radiation for Health Physics Theoretical Physics Instrumentation Solid Earth/Geophysics	2002 2004 2002 2004 2004
29	STS	PGD Planning Research and Statistics MSc. and PhD (Statistics)	1999 1999
G	COLPLANT		
30	CPT	PGD, M Agric., M Phil. and PhD (Crop Protection)	
31	HRT	M Agric. and PhD (Horticulture)	1992
32	PBST	PGD (Plant Breeding and Seed Technology) M Agric. and PhD (Plant Breeding) M Agric. and PhD (Seed Technology)	1988
33	PPCP	PGD (Plant Physiology and Crop Production) M Agric (Plant Physiology and Crop Production) M Phil. (Plant Physiology and Crop Production) PhD (Plant Physiology and Crop Production)	
34	SSLM	PGD, M.Agric and PhD (Soil Science and Land Management)	1988
H	COLVET		
35	Veterinary Medicine.	Master and PhD in -Veterinary Microbiology -Veterinary Parasitology -Veterinary Pathology -Veterinary Medicine -Veterinary Surgery -Veterinary Public Health -Veterinary Reproduction	2008

Table 4: Summary of Academic Programmes as at 2010/2011 Academic Session

PROGRAMME	NO. OF DEPT.	NO. OF PROGRAMMES				TOTAL
		UNDER-GRADUATE	POSTGRADUATE			
			PGD	Masters	PhD	
Agriculture	13	1	9	13	12	35
Engineering	4	4	0	0	0	4
Environmental Sciences	4	4	1	6	6	17
Sciences	12	12	9	12	12	45
Veterinary Medicine	6	1	0	8	8	17
Communication and General Studies (Servicing Department)	1	-	2	1		3
TOTAL	40	22	21	40	38	121

NO. OF UNDERGRADUATE PROGRAMMES WITH FULL ACCREDITATION - 19

NO. OF UNDERGRADUATE PROGRAMMES WITH INTERIM ACCREDITATION - 2

NO. OF APPROVED UNDERGRADUATE PROGRAMMES AWAITING ACCREDITATION- 1

SECTION 2

STUDENTS' STATISTICS

2.1 Students' Enrolment

Table 5: First Choice UME Applications and New Entrant Enrolment by Department for 2008/2009 to 2010/2011 Academic Sessions

DEPT.	2008/2009			2009/2010			2010/2011		
	No. of First Choice Applicants	Admission Quota	Number Enrolled	No. of First Choice Applicants	Admission Quota	Number Enrolled	No. of First Choice Applicants	Admission Quota	Number Enrolled
AEFM	583	79	69	713	102	91	835	115	99
AERD	69	81	79	57	112	93	103	105	105
AGAD	0	0	0	0	0	4	0	105	90
ABG	15	54	55	22	100	83	25	100	89
ANN	104	71	62	114	106	104	139	105	102
ANP	3	71	51	11	102	89	13	100	80
APH	202	75	78	209	112	97	243	115	103
PRM	0	66	56	3	91	80	2	100	92
CPT	7	77	53	9	116	99	0	115	98
HRT	5	69	50	16	110	97	13	100	74
PBST	2	106	54	4	104	96	6	105	85
PCCP	4	59	54	11	108	96	19	105	83
SSLM	15	69	53	19	105	94	16	105	84
AQFM	33	69	50	46	108	96	44	105	80
EMT	56	64	61	64	96	78	54	80	61
FWM	7	85	71	12	114	98	29	105	86
WRMA	20	53	31	36	86	70	31	100	84
AGE	89	30	21	95	37	33	151	30	34
CVE	264	35	31	335	35	35	398	30	35
ELE	745	32	31	643	36	30	614	30	32
MCE	316	35	31	367	36	30	366	30	33
BCH	486	82	71	561	102	92	569	95	90
BIO	52	95	89	85	96	78	91	95	77
CHM	53	123	111	57	93	78	56	95	84
CSC	729	83	62	915	87	80	1003	80	82
MCB	608	109	83	709	114	95	796	95	89
MTS	90	120	90	73	117	89	67	95	91
PHS	33	108	100	67	116	91	28	95	95
STS	20	74	67	65	116	93	66	80	70
FSM	0	0	0	0	0	0	0	100	92
FST	375	94	81	300	103	87	386	105	95
HSM	47	92	56	48	103	88	39	100	79
NTD	47	64	64	98	95	87	149	50	54
VET	144	34	39	143	36	31	144	30	35
TOTAL	5,223	2,358	1,954	5,907	2,994	2,582	6,495	3,000	2,662

Table 6: Geographical Distribution of Fresh Undergraduate Students by Gender from 2005/2006 to 2010/2011 Academic Sessions

STATE	2005/2006		2006/2007		2007/2008		2008/2009		2009/2010		2010/2011	
	M	F	M	F	M	F	M	F	M	F	M	F
Abia	1	3	8	5	5	7	6	4	11	5	8	7
Adamawa	0	0	2	2	0	0	0	0	0	0	0	1
Akwa Ibom	8	6	8	2	2	6	8	2	7	6	2	5
Anambra	9	5	6	2	5	10	7	7	13	9	9	12
Bauchi	0	0	0	1	0	0	0	0	0	0	0	0
Bayelsa	0	0	1	2	2	2	1	1	2	2	2	0
Benue	1	0	1	2	7	3	1	0	5	2	4	1
Borno	0	0	0	1	0	1	0	1	0	0	0	0
Cross River	3	0	5	2	0	1	6	2	4	3	2	2
Delta	24	21	39	16	36	16	35	12	39	25	43	22
Ebonyi	1	0	1	2	0	0	2	1	5	0	1	1
Edo	34	19	39	17	31	16	28	15	48	30	43	31
Ekiti	60	32	4	29	54	24	36	18	68	52	67	31
Enugu	1	0	2	3	1	2	1	0	8	4	3	3
Gombe	0	0	0	0	0	0	0	0	0	0	0	0
Imo	12	6	8	6	14	5	13	5	10	10	16	18
Jigawa	0	0	0	0	0	0	0	0	0	0	0	0
Kaduna	0	0	0	0	0	0	0	0	0	0	0	0
Kano	0	0	0	0	0	1	0	0	0	0	1	0
Katsina	0	0	0	0	0	0	0	0	0	0	0	0
Kebbi	0	0	2	0	0	0	0	0	0	0	0	0
Kogi	11	5	12	3	9	7	15	4	24	7	18	8
Kwara	14	9	20	6	15	11	14	10	33	11	27	13
Lagos	61	30	85	47	89	48	102	55	115	57	127	56
Nasarawa	0	0	0	0	0	0	0	0	0	0	0	0
Niger	0	0	0	0	0	0	0	1	0	1	0	0
Ogun	439	209	434	228	420	235	510	229	649	382	724	385
Ondo	70	35	64	24	69	37	72	30	97	45	111	60
Osun	183	94	130	71	119	89	153	62	217	121	242	134
Oyo	211	111	169	91	189	117	215	91	296	155	261	159
Plateau	1	0	0	0	2	0	0	0	0	0	1	0
Rivers	1	1	1	0	3	1	1	0	2	1	0	0
Sokoto	0	0	0	0	0	0	0	0	0	0	0	0
Taraba	0	1	0	0	0	1	0	0	0	0	0	0
Yobe	0	0	0	0	0	0	0	0	0	0	0	0
Zamfara	0	0	0	0	0	0	0	0	0	0	0	1
FCT	0	0	0	0	0	0	0	0	0	0	0	0
Foreigner	0	0	0	0	0	0	0	0	0	0	0	0
Total	1,151	582	982	540	1,072	673	1,226	550	1,653	929	1,712	950
	1,733		1,522		1,745		1,776		2,582		2,662	

Table 7: Geographical Distribution of Fresh Undergraduate Students by Gender and Discipline for 2010/2011 Academic Session

S/N	STATE	PROGRAMME												
		Agriculture		Engineering		Environmental Science		Sciences		Vet. Medicine		Total		
		M	F	M	F	M	F	M	F	M	F	M	F	T
1	Abia	3	3	0	0	2	0	3	4	0	0	8	7	15
2	Adamawa	0	0	0	0	0	0	0	1	0	0	0	1	1
3	Akwa Ibom	0	2	0	0	0	1	2	2	0	0	2	5	7
4	Anambra	2	5	2	1	1	1	4	5	0	0	9	12	21
5	Bauchi	0	0	0	0	0	0	0	0	0	0	0	0	0
6	Bayelsa	1	0	1	0	0	0	0	0	0	0	2	0	2
7	Benue	2	1	0	0	1	0	1	0	0	0	4	1	5
8	Borno	0	0	0	0	0	0	0	0	0	0	0	0	0
9	Cross Rivers	2	2	0	0	0	0	0	0	0	0	2	2	4
10	Delta	20	8	3	0	8	2	12	12	0	0	43	22	65
11	Ebonyi	0	0	0	0	0	0	1	1	0	0	1	1	2
12	Edo	23	9	2	1	1	3	15	17	2	1	43	31	74
13	Ekiti	30	16	2	0	12	2	22	13	1	0	67	31	98
14	Enugu	1	1	0	0	1	0	1	2	0	0	3	3	6
15	Gombe	0	0	0	0	0	0	0	0	0	0	0	0	0
16	Imo	4	4	0	1	2	7	10	6	0	0	16	18	34
17	Jigawa	0	0	0	0	0	0	0	0	0	0	0	0	0
18	Kaduna	0	0	0	0	0	0	0	0	0	0	0	0	0
19	Kano	0	0	0	0	1	0	0		0		1	0	1
20	Katsina	0	0	0	0	0	0	0	0	0	0	0	0	0
21	Kebbi	0	0	0	0	0	0	0	0	0	0	0	0	0
22	Kogi	3	4	5	0	5	0	5	4	0	0	18	8	26
23	Kwara	13	4	2	0	2	2	10	7	0	0	27	13	40
24	Lagos	58	21	12	1	14	7	42	27	1	0	127	56	183
25	Nasarawa	0	0	0	0	0	0	0	0	0	0	0	0	0
26	Niger	0	0	0	0	0	0	0	0	0	0	0	0	0
27	Ogun	335	133	40	8	99	37	239	203	11	4	724	385	1109
28	Ondo	51	29	9	0	11	7	39	23	1	1	111	60	171
29	Osun	0	64	0	0	0	11	0	56	0	3	0	134	0
30	Oyo	0	80	0	0	0	16	0	62	0	1	0	159	0
31	Plateau	1	0	0	0	0	0	0	0	0	0	1	0	1
32	Rivers	0	0	0	0	0	0	0	0	0	0	0	0	0
33	Sokoto	0	0	0	0	0	0	0	0	0	0	0	0	0
34	Taraba	0	0	0	0	0	0	0	0	0	0	0	0	0
35	Yobe	0	0	0	0	0	0	0	0	0	0	0	0	0
36	Zamfara	0	1	0	0	0	0	0	0	0	0	0	1	0
37	FCT	0	0	0	0	0	0	0	0	0	0	0	0	0
38	Foreigners	0	0	0	0	0	0	0	0	0	0	0	0	0
	Total	797	387	122	12	215	96	553	445	25	10	1,712	950	2,662

Table 8: Fresh Undergraduate Students' Enrolment by Gender and Discipline from 2005/2006 to 2010/2011 Academic Sessions

DISCIPLINE	2005/2006		2006/2007		2007/2008		2008/2009		2009/2010		2010/2011	
	M	F	M	F	M	F	M	F	M	F	M	F
Agriculture	506	231	454	197	453	268	494	7	737	388	797	387
Engineering	45	8	55	7	109	7	99	12	116	8	122	12
Environmental Sciences	162	72	99	58	128	56	150	55	262	81	215	96
Sciences	421	261	356	269	364	300	465	301	514	445	553	445
Vet Medicine	19	11	18	9	20	10	18	6	24	7	25	10
TOTAL	1,153	583	982	540	1,074	641	1,226	550	1,653	929	1,712	950
GRAND TOTAL	1,736		1,522		1,715		1,776		2,582		2,662	

Table 9: Total Undergraduate Students' Enrolment by Gender and Discipline from 2005/2006 to 2010/2011 Academic Sessions

DISCIPLINE	2005/2006		2006/2007		2007/2008		2008/2009		2009/2010		2010/2011	
	M	F	M	F	M	F	M	F	M	F	M	F
Agriculture	1,933	1,132	2,022	990	2,151	1,084	2,342	1,134	2,660	1,361	2,895	1,481
Engineering	161	17	228	24	279	26	347	26	425	32	474	37
Environmental Sciences	728	334	723	287	685	273	717	279	827	299	862	329
Sciences	1,557	1,497	1,433	1,016	1,429	1,088	1,632	1,221	1,787	1,429	1,915	1,562
Vet. Medicine	74	27	88	35	103	43	106	51	109	51	115	54
TOTAL	4,453	3,007	4,494	2,352	4,647	2,514	5,143	2,711	5,808	3,172	6,261	3,463
GRAND TOTAL	7,460		6,846		7,161		7,854		8,980		9,725	

Table 10: Summary of Students Full Time Enrolment by Mode of Study form 2005/2006 to 2010/2011 Academic Sessions

Year	Sub-Degree	First Degree	Postgraduate Diploma	Higher Degrees	Total
2005/2006	1,600	7,460	102	229	9,391
2006/2007	-	6,846	82	269	7,197
2007/2008	2,616	7,161	67	255	10,099
2008/2009	2,122	7,854	-	602	10,578
2009/2010	1,270	8,980	53	833	11,136
2010/2011	1,247	9,725	85	922	11,979

Table 11: FUNAAB Full-Time Students' Enrolment by Mode of Study and Gender for 2010/2011 Academic Session

Category	Full-Time			Part-Time			Grand Total
	Male	Female	Total	Male	Female	Total	
Pre-Degree	593	416	1,009	-	-	-	1,009
Diploma (Foundation Science)	142	96	238	-	-	-	238
Undergraduate	3,463	6,261	9,725	116	92	208	9,933
Postgraduate, PGD	71	14	85	10	4	14	99
Postgraduate, Masters	389	223	612	46	13	59	671
Postgraduate, Ph. D	220	90	310	21	7	28	338
Total	4,878	7,100	11,979	193	116	309	12,288

Figure 1: Full-Time Students' Enrolment by Mode of Study and Gender in Percentage for 2010/2011 Academic Session

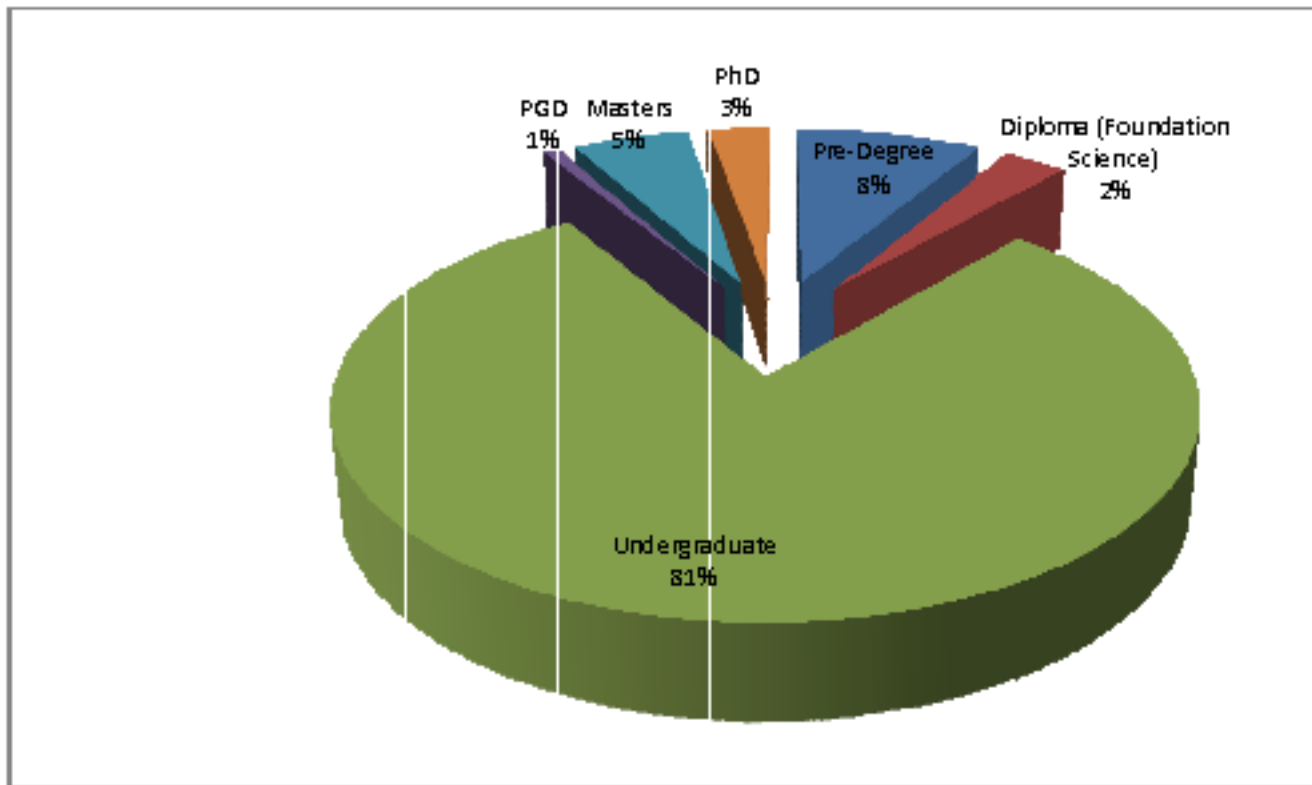


Figure 2: FUNAAB Full-Time Undergraduate Students' Growth Rate from 1988/1989 to 2010/2011 Academic Sessions

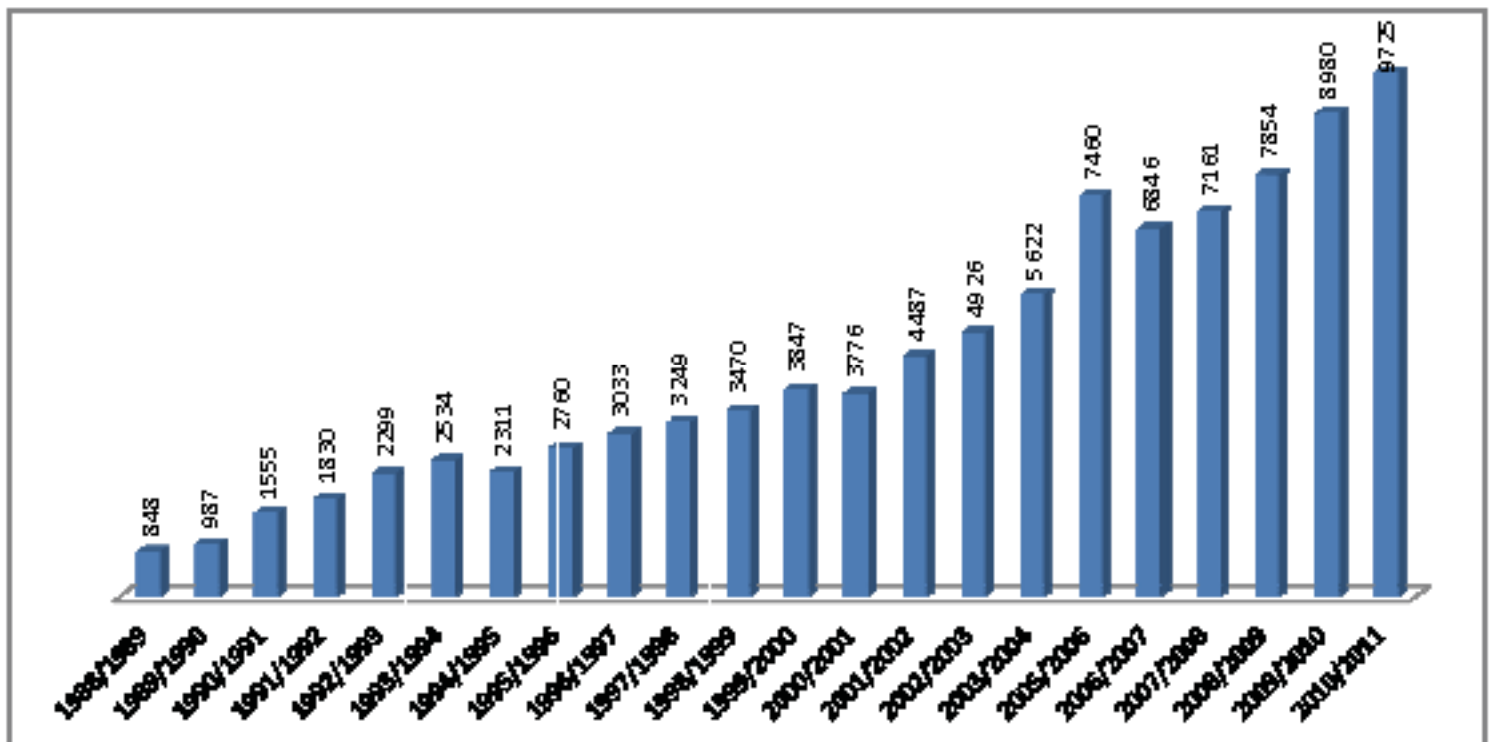


Table 12: Undergraduate Students' Enrollment by Gender and Level for 2010/2011 Academic Session

COLLEGE/ DEPARTMENT	UNDERGRADUATE STUDENTS														
	100L		200L		300L		400L		500L		600L		TOTAL		
	M	F	M	F	M	F	M	F	M	F	M	F	M	F	T
COLLEGE OF AGRICULTURAL MANAGEMENT AND RURAL DEVELOPMENT															
AEFM	58	36	58	28	41	30	35	22	58	35			250	151	401
AERD	67	32	61	28	54	27	34	25	43	34			259	146	405
CGNS	0	0	0	0	0	0	0	0	0	0			0	0	0
AGAD	55	31	9	4	4	6	0	0	0	0			68	41	109
Sub-Total	180	99	128	60	99	63	69	47	101	69			577	338	915
COLLEGE OF ANIMAL SCIENCE AND LIVESTOCK PRODUCTION															
ABG	67	20	49	28	47	16	33	25	38	18			234	107	341
ANN	69	28	68	36	44	26	46	20	38	14			265	124	389
ANP	36	39	49	39	37	18	36	4	20	11			178	111	289
APH	68	32	80	12	62	27	51	26	65	18			326	115	441
PRM	64	27	44	27	37	18	32	11	25	6			202	89	291
Sub-Total	304	146	290	142	227	105	198	86	186	67			1,205	546	1,751
COLLEGE OF ENGINEERING															
AGE	32	1	27	2	13	4	21	0	12	1			105	8	113
ELE	25	5	26	1	29	1	23	1	15	3			118	12	130
CVE	27	4	36	2	27	2	22	2	12	2			124	11	135
MCE	30	1	25	2	33	1	19	0	20	2			127	6	133
Sub-Total	114	11	114	7	102	8	85	3	59	8			474	37	511
COLLEGE OF ENVIRONMENTAL RESOURCE MANAGEMENT															
AQFM	34	43	64	27	42	18	45	14	39	25			224	127	351
EMT	38	19	54	18	47	11	14	13	29	17			182	78	260
FWM	62	19	70	23	50	26	32	11	24	9			238	88	326
WRMA	74	9	56	8	26	4	30	7	32	8			218	36	254
Sub-Total	208	90	244	76	165	59	121	45	124	59			862	329	1,191
COLLEGE OF FOOD TECHNOLOGY AND HUMAN ECOLOGY															
FSM	38	49	8	5	0	0	0	0	0	0			166	136	302
FST	25	67	22	50	29	57	12	47	15	29			103	250	353
HSM	20	57	17	72	17	54	12	42					66	225	291
NTD	14	35	19	70	22	53	13	40					68	198	266
Sub-Total	97	208	66	197	68	164	37	129	15	29			283	727	1,010

COLLEGE/ DEPARTMENT	UNDERGRADUATE STUDENTS														
	100L		200L		300L		400L		500L		600L		TOTAL		
	M	F	M	F	M	F	M	F	M	F	M	F	M	F	T
COLLEGE OF NATURAL SCIENCES															
BCH	36	48	45	39	48	30	37	19					166	136	302
BIO	31	38	39	45	36	55	38	37					144	175	319
CHM	42	38	41	36	52	51	37	12					172	137	309
CSC	63	13	59	17	49	19	64	13					235	62	297
MTS	73	13	75	12	69	12	38	12					255	49	304
MCB	38	45	43	45	44	45	27	62					152	197	349
PHS	85	4	71	7	88	7	52	4					296	22	318
STS	54	13	59	23	48	11	49	10					210	57	267
Sub-Total	422	212	432	224	434	230	342	169					1,630	835	2,465
COLLEGE OF PLANT SCIENCE AND CROP PRODUCTION															
CPT	51	42	56	39	29	27	29	35	28	15			193	158	351
HRT	49	23	35	51	40	12	33	27	29	10			186	123	309
PBST	56	25	46	42	34	29	33	26	32	20			201	142	343
PPCP	64	17	55	26	46	13	31	27	33	23			229	106	335
SSLM	62	18	82	10	59	5	46	27	56	10			305	70	375
Sub-Total	282	125	274	168	208	86	172	142	178	78			1,114	599	1,713
COLLEGE OF VETERINARY MEDICINE															
Veterinary Medicine	23	10	27	8	15	10	19	8	14	7	17	11	115	54	169
GRAND TOTAL	1,630	901	1,575	882	1,318	725	1,043	629	677	317	17	11	6,260	3,465	9,725

Figure 3: Undergraduate Students' Enrolment by Department for 2010/2011 Academic Session

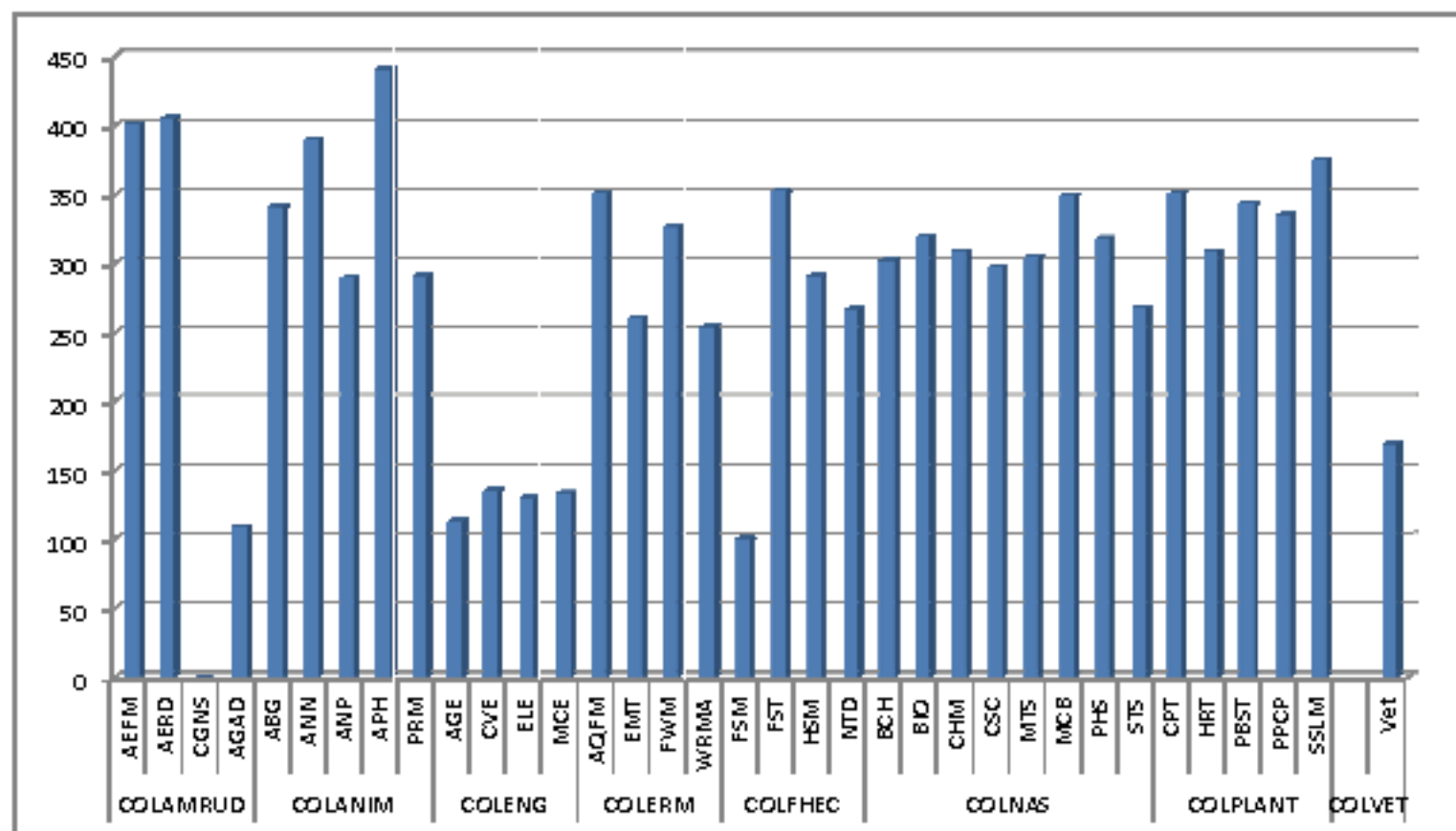


Table 13: Geographical Distribution of Undergraduate Students from 2006/2007 to 2010/2011 Academic Sessions

STATE	2006/2007		2007/2008		2008/2009		2009/2010		2010/2011	
	M	F	M	F	M	F	M	F	M	F
Abia	16	11	9	20	16	11	9	20	43	19
Adamawa	0	1	0	1	0	1	0	1	0	1
Akwa Ibom	27	10	11	27	27	10	11	27	21	18
Anambra	27	21	10	38	27	21	10	38	45	34
Bauchi	0	1	0	1	0	1	0	1	0	0
Bayelsa	3	2	3	4	3	2	3	4	6	7
Benue	6	1	8	7	6	1	8	7	15	8
Borno	0	0	0	1	0	0	0	1	1	0
Cross River	12	1	4	8	12	1	4	8	13	11
Delta	126	75	99	134	126	75	99	134	164	103
Ebonyi	2	2	1	1	2	2	1	1	7	4

STATE	2006/2007		2007/2008		2008/2009		2009/2010		2010/2011	
	M	F	M	F	M	F	M	F	M	F
Edo	110	77	65	138	110	77	65	138	180	101
Ekiti	218	122	193	244	218	122	193	244	251	154
Enugu	7	5	3	9	7	5	3	9	16	8
Gombe	0	0	0	0	0	0	0	0	0	0
Imo	43	25	20	49	43	25	20	49	55	47
Jigawa	0	0	0	0	0	0	0	0	0	0
Kaduna	0	0	0	0	0	0	0	0	0	0
Kano	0	0	0	1	0	0	0	1	1	1
Katsina	0	0	0	0	0	0	0	0	0	0
Kebbi	3	0	0	1	3	0	0	1	0	0
Kogi	51	25	20	52	51	25	20	52	70	32
Kwara	50	31	32	57	50	31	32	57	103	46
Lagos	268	129	274	247	268	129	274	247	470	245
Nasarawa	0	0	0	0	0	0	0	0	0	0
Niger	1	0	0	0	1	0	0	0	1	1
Ogun	1,659	848	1,851	957	1,659	848	1,851	957	2511	1394
Ondo	317	137	317	98	317	137	317	98	375	197
Osun	634	369	736	208	634	369	736	208	823	458
Oyo	908	455	978	209	908	455	978	209	1082	571
Plateau	2	0	3	0	2	0	3	0	2	1
Rivers	2	3	10	1	2	3	10	1	4	3
Sokoto	0	0	0	0	0	0	0	0	0	0
Taraba	0	0	0	1	0	0	0	1	1	0
Yobe	0	0	0	0	0	0	0	0	0	0
Zamfara	0	0	0	0	0	0	0	0	0	1
FCT	0	0	0	0	0	0	0	0	0	0
Foreigner	2	1	0	0	2	1	0	0	0	0
Total	4,494	2,352	4,647	2,514	4,494	2,352	4,647	2,514	6,260	3,465
	6,846		7,161		7,854		8,980		9,725	

Table 14: Full Time Equivalent and Carrying Capacity for 2010/2011 Academic Session

DEPT.	HC	FTE	NT	ENT = CC BY FTE	TSR BY HC	TSR (NUC)
COLAMRUD						
AEFM	401	499	20	34	1:21	1:15
AERD	405	274	20	19	1:20	1:15
AGAD	109	27	6	6	1:18	1:15
CGNS	0	497	40	40		1:35
SUB-TOTAL	915	1,297	86	99	1:11	1:15
COLANIM						
ABG	341	290	11	20	1:31	1:15
ANN	389	266	15	18	1:24	1:15
ANP	289	320	11	22	1:24	1:15
APH	441	607	19	41	1:25	1:15
PRM	291	146	8	8	1:36	1:15
SUB-TOTAL	1,751	1,629	64	109	1:26	1:15
COLENG						
AGE	113	275	11	19	1:10	1:15
CVE	135	86	11	8	1:12	1:15
ELE	130	95	10	7	1:13	1:15
MCE	133	145	9	10	1:15	1:15
SUB-TOTAL	511	601	41	44	1:13	1:15
COLERM						
AQFM	351	260	21	18	1:16	1:15
EMT	260	142	17	10	1:14	1:15
FWM	326	258	18	18	1:17	1:15
WRMA	254	314	10	21	1:25	1:15
SUB-TOTAL	1,191	974	66	67	1:17	1:15
COLFHEC						
FST	353	235	15	12	1:25	1:20
HSM	291	151	10	8	1:26	1:20
NTD	266	156	10	8	1:33	1:20
FSM	100	4	5	1	1:20	1:20
SUB-TOTAL	1,010	546	40	29	1:27	1:20
COLMAS						
ACC			3	6		1:20
BEM			4	6		1:20
BFN			3	6		1:20
ECO			6	6		1:20
ETS				6		
SUB-TOTAL			16	30		

DEPT.	HC	FTE	NT	ENT= CC BY FTE	TSR BY HC	TSR (NUC)
COLNAS						
BCH	302	192	9	10	1:34	1:20
BIO	319	488	13	25	1:29	1:20
CHM	309	963	24	49	1:13	1:20
CSC	297	328	17	17	1:30	1:20
MCB	349	122	13	7	1:27	1:20
MTS	304	702	14	36	1:20	1:20
PHS	318	725	19	37	1:19	1:20
STS	267	316	7	16	1:38	1:20
SUB-TOTAL	2,465	3,836	116	197	1:23	1:20
COLPLANT						
CPT	351	173	13	12	1:27	1:15
HORT	309	136	11	10	1:28	1:15
PBST	343	184	15	13	1:23	1:15
PPCP	335	497	19	34	1:20	1:15
SSLM	375	298	15	20	1:25	1:15
SUB-TOTAL	1,713	1,288	73	89	1:24	1:15
COLVET						
VMS	169	116	51	11	1:04	1:10
GRAND TOTAL	9,725	10,287	553	645	1:19	

Key:

CC	CARRYING CAPACITY
ENT	EXPECTED NUMBER OF TEACHERS
FTE	FULL-TIME EQUIVALENT
HC	HEADCOUNT
NT	CURRENT NUMBER OF TEACHERS
TSR	TEACHER/STUDENTS RATIO

Table 15: Number of Departmental Courses by level for 2010/2011 Academic Session

DEPARTMENT	NUMBER OF COURSES BY LEVEL							NO. OF REGISTERED STUDENTS FOR THE COURSES	NO. OF STUDENTS IN THE DEPARTMENT
	100	200	300	400	500	600	Total		
COLAMRUD									
AEFM	1	2	2	2	10		17	9,559	401
AERD	0	1	1	2	10		14	4,402	405
AGAD	0	0	0	2	0		2	472	109
CGNS	3	4	0	0	0		7	13,302	0
TOTAL	4	7	3	6	20		40	27,735	915
COLANM									
ABG	0	0	1	3	7		11	3,369	341
ANN	0	1	1	2	7		11	4,171	389
ANP	3	1	0	2	9		15	6,034	289
APH	0	1	2	3	7		13	6,644	441
PRM	0	1	0	2	6		9	2,638	291
TOTAL	3	4	4	12	36		59	22,856	1,751
COLENG									
AGE	1	7	7	8	13		36	5,415	113
CVE	1	3	15	7	14		40	1,262	135
ELE	1	6	12	7	9		35	1,447	130
MCE	2	6	16	6	13		43	2,084	133
TOTAL	5	22	50	28	49		154	10,208	551
COLERM									
AQFM	0	1	17	14	13		45	3,715	351
EMT	0	2	10	12	11		35	1,919	260
FWM	0	3	16	14	31		64	4,965	326
WRM	0	4	11	11	14		40	4,177	254
TOTAL	0	10	54	51	69		184	14,776	1,191
COLPHEC									
FSM	0	7	0	0	0		7	89	302
FST	0	4	9	8	16		37	3,747	353
HSM	0	9	11	26			46	2,776	291
NTD	0	5	11	20			36	2,218	266
TOTAL	0	25	31	54	16		126	8,830	1,010
COLNAS									
BCH	0	2	15	14			31	3,412	302
BIO	5	6	11	12			34	9,403	319
CHM	5	9	19	18			51	19,886	309
CSC	0	4	9	11			24	4,946	297
MTS	6	5	9	12			32	10,464	304
MCB	0	4	9	10			23	1,959	349
PHS	6	8	16	11			41	14,811	318
STS	1	7	10	15			33	5,314	267
TOTAL	23	45	98	103			269	70,195	2,465

DEPARTMENT	NUMBER OF COURSES BY LEVEL							NO. OF REGISTERED STUDENTS FOR THE COURSES	NO. OF STUDENTS IN THE DEPARTMENT
	100	200	300	400	500	600	Total		
COLPLANT							0		
CPT	0	0	1	2	8		11	2,364	351
HRT	0	1	0	2	12		15	2,472	309
PBST	0	0	1	3	8		12	2,830	343
PPCP	2	2	1	2	9		16	8,685	335
SSLM	0	1	2	2	12		17	5,462	375
TOTAL	2	4	5	11	49		71	21,813	1,713
COLVET									
Vet. Med.	1	12	12	15	12	12	64	1,641	167

Table 16: Geographical Distribution of Undergraduate Students by Discipline and Gender for 2010/2011 Academic Session

State	Agriculture		Engineering		Environmental Science		Sciences		Veterinary medicine		Total		
	M	F	M	F	M	F	M	F	M	F	M	F	T
Abia	21	12	4	0	5	0	13	7	0	0	43	19	62
Adamawa	0	0	0	0	0	0	0	1	0	0	0	1	1
Akwa Ibom	10	8	1		1	3	9	7	0	0	21	18	39
Anambra	15	13	6	1	8	3	16	17	0	0	45	34	79
Bauchi	0	0	0	0	0	0	0	0	0	0	0	0	0
Bayelsa	4	3	1	1	0	1	1	2	0	0	6	7	13
Benue	2	4	2	0	4	0	7	3	0	1	15	8	23
Borno	0	0	0	0	0	0	1	0	0	0	1	0	1
Cross River	7	3	0	0	3	1	3	6	0	1	13	11	24
Delta	82	46	12	0	26	16	43	40	1	1	164	103	267
Ebonyi	1	2	1	1	1	0	4	1	0	0	7	4	11
Edo	87	41	10	1	30	13	51	45	2	1	180	101	281
Ekiti	116	77	8	3	45	12	75	59	7	3	251	154	405
Enugu	4	4	0	0	3	0	8	4	1	0	16	8	24
Gombe	0	0	0	0	0	0	0	0	0	0	0	0	0
Imo	20	14	1	2	11	7	21	23	2	1	55	47	102
Jigawa	0	0	0	0	0	0	0	0	0	0	0	0	0
Kaduna	0	0	0	0	0	0	0	0	0	0	0	0	0
Kano	0	0	0	0	1	0	0	1	0	0	1	1	2
Katsina	0	0	0	0	0	0	0	0	0	0	0	0	0
Kebbi	0	0	0	0	0	0	0	0	0	0	0	0	0
Kogi	19	12	13	1	13	3	24	16	1	0	70	32	102
Kwara	34	15	11	0	13	3	40	28	5	0	103	46	149
Lagos	203	105	41	2	64	26	158	108	4	4	470	245	715
Nasarawa	0	0	0	0	0	0	0	0	0	0	0	0	0
Niger	1	0	0	0	0	0	0	1	0	0	1	1	2
Ogun	1104	546	188	19	338	125	838	682	43	22	2511	1394	3905
Ondo	168	86	29	1	57	20	111	85	10	5	375	197	572
Osun	415	219	65	3	110	38	217	190	16	8	823	458	1281
Oyo	580	272	81	2	123	58	275	233	23	6	1082	571	6153
Plateau	1	0	0	0	0	0	1	0	0	1	2	1	3
Rivers	2	0	0	0	2	0	0	3	0	0	4	3	7
Sokoto		0	0	0	0	0	0	0	0	0	0	0	0
Taraba	1	0	0	0	0	0	0	0	0	0	1	0	1
Yobe	0	0	0	0	0	0	0	0	0	0	0	0	0
Zamfara	0	0	0	0	0	0	0	0	0	0	0	1	1
FCT	0	0	0	0	0	0	0	0	0	0	0	0	0
Foreigner	0	0	0	0	0	0	0	0	0	0	0	0	0
Total	2,895	1,481	474	37	858	329	1,915	1,562	115	54	6,260	3,465	9,725
	4,376		511		1,187		3,477		169		9,725		

Table 17: Postgraduate Students' Enrolments for 2010/2011 Academic Session

S/N	Programme	Full Time						Part Time					
		PGD		Masters		PhD		PGD		Masters		PhD	
		M	F	M	F	M	F	M	F	M	F	M	F
1	AEFM	0	0	21	18	4	4	0	0	5	2	1	1
2	AERD	1	0	23	12	12	7		1	1	1	0	0
3	AGAD	0	0	0	0	0	0	0	0	0	0	0	0
4	CGNS	4	1	11	6	1	0	0	1	3	1	0	0
5	ABG	0	0	17	5	5	1	0	0	0	0	0	0
6	ANN	1	0	7	7	8	2	0	0	0	0	2	0
7	ANP	0	0	2	3	3	7	0	0	0	0	0	0
8	APH	5	2	9	4	7	1	0	0	0	0	0	0
9	PRM	0	0	4	3	2	1	0	0	0	0	0	0
10	AGE	3	1	5	0	8	0	1	0	0	0	3	0
11	ELE	11	1	17	2	3	0	2	0	2	0	1	0
12	CVE	3	0	4	1	1	0	0	0	0	0	2	0
13	MCE	20	0	41	1	18	0	0	0	0	0	1	0
14	AQFM	3	0	13	4	12	3	2	0	0	0	0	0
15	EMT	0	0	15	8	14	1	0	0	20	6	1	0
16	FWM	0	0	12	3	11	6	0	0	0	0	0	0
17	WRMA	0	0	3	3	5		0	0	1	0	1	0
18	FST	2	0	14	20	10	7	0	0	1	1	1	3
19	HSM	0	0	3	10	1	4	0	0	0	0	0	0
20	NTD	1	1	6	28	4	12	0	1	0	0	0	0
21	FSM	0	0	0	0	0	0	0	0	0	0	0	0
22	BCH	0	0	14	4	3	5	0	0	1	0	0	0
23	BIO	0	0	10	6	5	4	0	0	0	0	0	0
24	CHM	0	0	15	7	3	1	0	0	0	0	1	0
25	CSC	8	3	38	11	12	1	2	1	7	2	0	0
26	MCB	0	0	16	27	7	7	0	0	1	0	0	0
27	MTS	0	0	9	1	10	0	0	0	0	0	0	0
28	PHS	0	0	16	2	15	3	0	0	0	0	0	0
29	STS	4	0	4	1	2	0	2	0	0	0	1	3
30	CPT	1	3	5	5	10	7	0	0	1	0	0	0
31	HRT	0	1	13	8	1	0	0	0	0	0	0	0
32	PEST	1	0	7	1	8	0	0	0	0	0	3	0
33	PPCP	1	0	5	2	3	1	0	0	0	0	0	0
34	SSLM	2	1	4	7	5	2	0	0	0	0	0	0
35	Veterinary Medicine	0	0	6	3	0	0	1	0	3	0	4	1
TOTAL		71	14	389	223	220	90	10	4	46	13	21	7
		85		612		310		14		59		28	

2.2 Graduate Output

Table 18: Graduate Output by Discipline for 2006/2007 to 2010/2011 Academic Sessions

DISCIPLINE	2006/2007		2007/2008		2008/2009		2009/2010		2010/2011	
	M	F	M	F	M	F	M	F	M	F
Agriculture	222	124	295	167	222	124	295	167	366	187
Engineering	28	3	29	6	28	3	29	6	51	7
Environmental Sciences	111	45	129	40	111	45	129	40	120	56
Sciences	237	252	270	210	237	252	270	210	291	249
Vet. Medicine	0	0	13	1	0	0	13	1	17	11
TOTAL	598	424	736	424	598	424	736	424	845	510
GRAND TOTAL	1,022		1,160		1,414		1,522		1,355	

Figure 4: FUNAAB Graduate Output-First Degree from 2006/2007 to 2010/2011 Academic Sessions

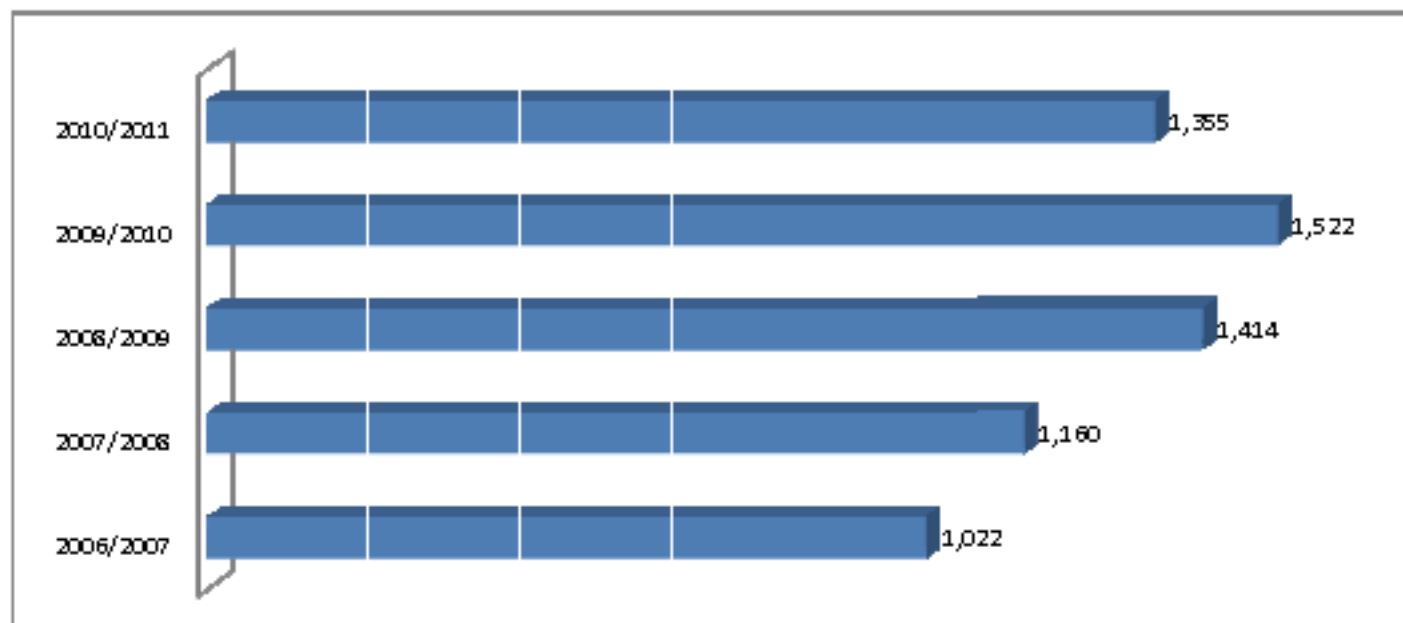
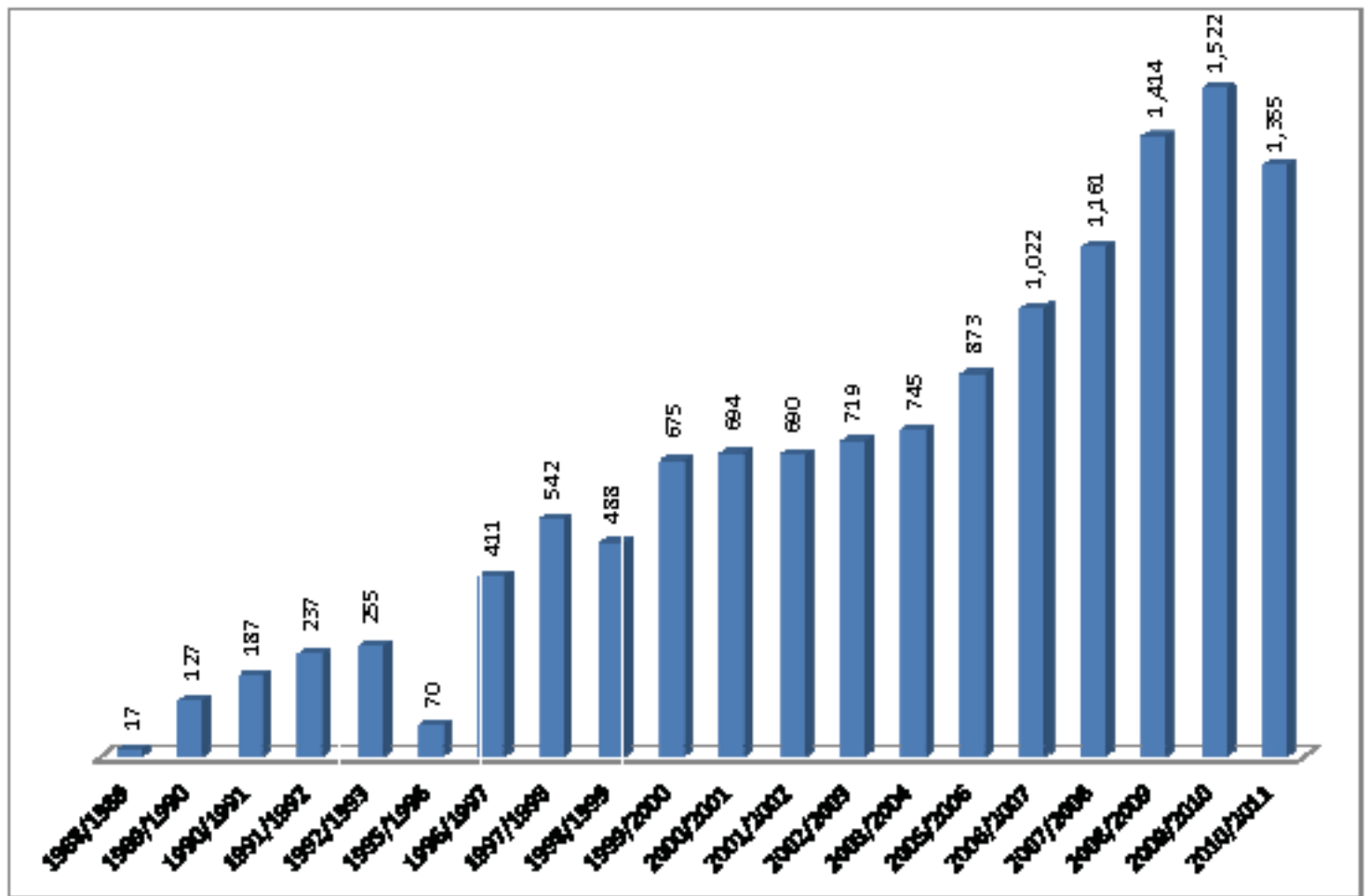


Figure 5: FUNAAB Undergraduate Graduation Pattern from 1988/1989 to 2010/2011 Academic Sessions



Total Number of Graduates from 1988/1989 to 2010/2011 Academic Sessions is 13,204

Table 19: Graduate Output by Gender and Class of Degree for 2010/2011 Academic Session

COLLEGE	DEPT.	CLASS OF DEGREE										Un-classified		TOTAL		GRAND TOTAL
		1ST CLASS		2ND CLASS UPPER		2ND CLASS LOWER		3RD CLASS		PASS		M	F	M	F	
		M	F	M	F	M	F	M	F	M	F					
COLAMRUD	AFFM	3	7	24	15	14	9	4	1	2	0			51	32	83
	AERD	1	0	11	8	20	15	3	5	1	1			34	29	63
	AGAD	0	0	0	0	0	0	0	0	0	0			0	0	0
	CGNS	0	0	0	0	0	0	0	0	0	0			0	0	0
	Sub-Total	4	7	35	23	34	24	7	6	3	1			87	61	148
COLANIM	ABG	0	1	8	8	12	7	1	1	0	0			21	17	38
	ANN	2	1	7	5	21	7	2	0	1	0			33	13	46
	ANP	0	0	7	5	4	4	0	0	1	0			14	9	23
	APH	0	0	24	5	28	3	2	2	1	0			37	10	47
	PRM	1	1	4	4	12	1	2	0	0	0			19	6	25
	Sub-Total	3	3	52	27	79	22	7	3	3	0			144	55	199
COLENG	AGE	0	0	10	0	2	0	0	0	0	0			12	0	12
	CVE	0	0	9	1	1	1	1	0	0	0			11	2	13
	ELE	1	1	4	2	3	0	0	0	0	0			10	3	13
	MCE	0	0	13	2	4	0	1	0	0	0			18	2	20
	Sub-Total	1	1	36	5	10	1	2	0	0	0			51	7	58
COLERM	AQFM	0	0	10	10	19	12	7	2	1	0			37	24	61
	EMI	1	0	9	12	13	4	5	1	0	0			28	17	45
	FWM	1	0	5	5	12	3	4	0	0	0			22	8	30
	WRMA	1	0	12	1	15	5	5	1	0	0			33	7	40
	Sub-Total	3	0	36	28	59	24	21	4	1	0			120	56	176
COLPHIC	FSM	0	0	0	0	0	0	0	0	0	0			0	0	0
	FSI	0	2	4	14	7	10	1	1	0	0			14	27	41
	HSM	0	1	0	10	10	24	1	4	0	0			11	41	52
	NID	0	1	5	12	5	20	1	2	0	0			11	35	46
	Sub-Total	0	4	11	36	22	54	3	9	0	0			36	103	139
COLNAS	BCH	0	0	14	9	14	3	5	5	0	0			33	17	50
	BID	3	0	2	7	10	14	7	9	3	0			25	32	57
	CHM	1	0	8	3	8	5	8	2	1	0			24	10	34
	CSC	0	0	10	1	20	9	13	2	1	0			44	12	56
	MIS	1	0	5	2	19	5	9	2	0	0			34	9	43
	MCB	1	1	5	24	8	19	5	9	1	0			20	55	75
	PHS	0	0	12	2	19	0	4	0	0	1			37	3	40
	SIS	0	0	4	1	14	4	14	3	2	0			34	8	44
	Sub-Total	6	1	62	51	112	61	67	32	8	1			253	146	401
COLPLANT	CPI	1	0	4	5	12	8	1	1	0	0			20	14	34
	HEI	0	0	9	4	10	2	4	2	0	0			23	10	33
	PEI	0	1	7	4	8	9	3	2	0	0			18	18	36

COLLEGE	DEPT.	CLASS OF DEGREE												TOTAL		GRAND TOTAL
		1ST CLASS		2ND CLASS UPPER		2ND CLASS LOWER		3RD CLASS		PASS		Un-classified				
		M	F	M	F	M	F	M	F	M	F	M	F			
	PECP	0	2	11	9	10	8	7	0	0	0			28	19	47
	ESLM	1	1	8	2	30	4	7	1	0	0			44	10	54
	Sub-Total	2	4	41	28	70	33	22	6	0	0			135	71	206
COLVET	VEI											17	11	17	11	28
		19	20	275	198	388	219	131	60	15	2	17	11	645	510	1,355
TOTAL		39		473		607		191		17		28		1,355		

Figure 6: Graduate Output by Class of Degree and Gender for 2010/2011 Academic Session

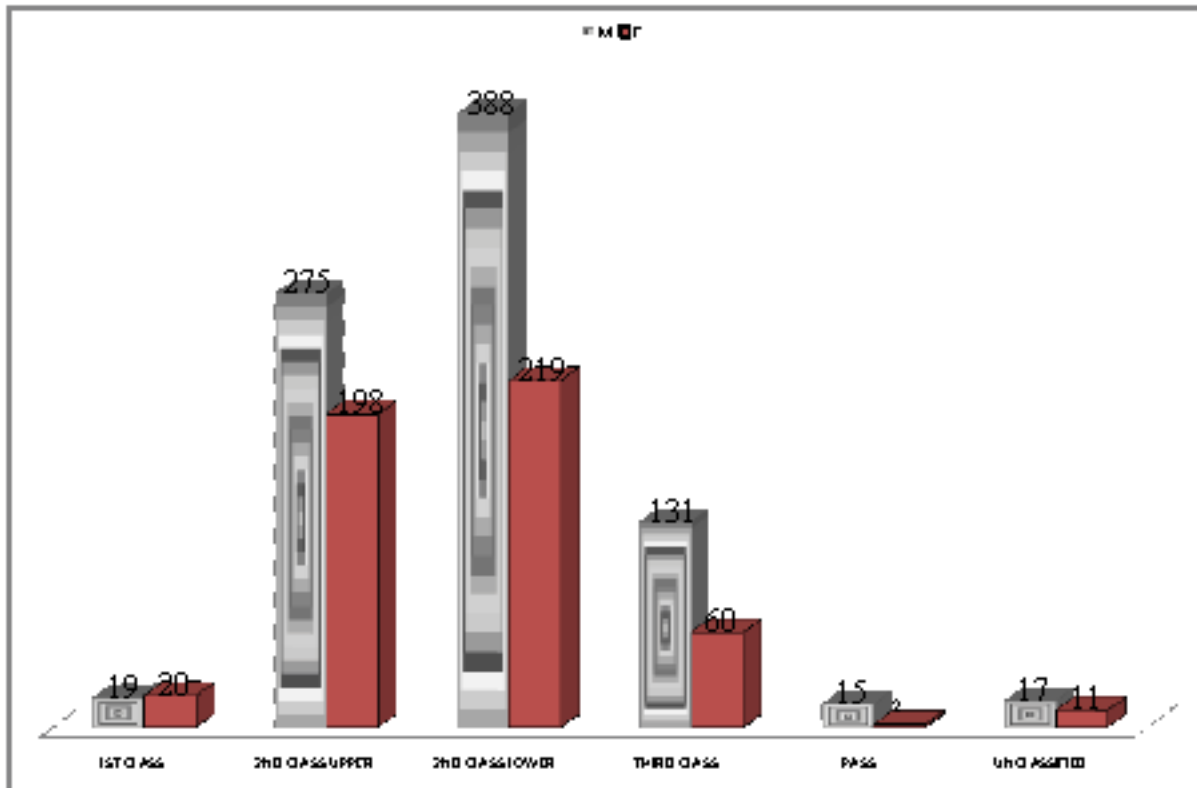


Table 20: Graduate Output by Gender and Class of Degree for 2009/2010 Academic Session

COLLEGE	DEPT	CLASS OF DEGREE										Unclassified		TOTAL		GRAND TOTAL
		1ST CLASS		2ND CLASS UPPER		2ND CLASS LOWER		3RD CLASS		PASS		M	F	M	F	
		M	F	M	F	M	F	M	F	M	F	M	F	M	F	
COLAMRUD	AEFM	2	5	20	19	18	9	5	4	1	1			46	38	84
	AERD	0	0	15	6	25	6	10	6	0	0			50	18	68
	AGAD	0	0	0	0	0	0	0	0	0	0			0	0	0
	CGNS	0	0	0	0	0	0	0	0	0	0			0	0	0
	Subtotal	2	5	35	25	43	15	15	10	1	1			96	56	152
COLANIM	ABG	2	0	18	6	26	4	2	1	1	0			49	11	60
	ANN	0	0	25	8	22	5	6	0	1	0			54	13	67
	ANP	0	0	2	0	2	1	1	0	0	0			5	1	6
	APH	4	1	24	9	23	6	6	2	1	0			58	18	76
	PRM	0	0	4	9	26	10	8	2	1	0			39	21	60
	Subtotal	6	1	73	32	99	26	23	5	4	0			205	64	269
COLENG	AGE	0	0	6	1	4	0	0	0	0	1			10	2	12
	CVE	1	0	7	2	4	0	0	0	0	0			12	2	14
	ELE	1	0	10	0	6	0	0	0	0	0			17	0	17
	MCE	0	0	6	1	2	0	0	0	0	0			8	1	9
	Subtotal	2	0	29	4	16	0	0	0	0	1			47	5	52
COLERM	AQFM	0	0	12	5	19	8	5	0	0	0			36	13	49
	EMT	0	0	6	8	8	8	7	2	0	0			21	18	39
	FWM	0	0	28	8	14	3	4	0	0	0			46	11	57
	WRM A	1	0	17	3	20	7	9	0	2	0			49	10	59
	Subtotal	1	0	63	24	61	26	25	2	2	0			152	52	204
COLFHEC	FSM	0	0	0	0	0	0	0	0	0	0			0	0	0
	FST	2	2	6	13	8	15	1	2	0	0			17	32	49
	HSM	0	0	2	12	16	30	1	3	0	0			19	45	64
	NTD	0	1	5	18	7	31	4	8	0	0			16	58	74
	Subtotal	1	3	13	43	31	76	6	13	0	0			52	135	187
COLNAS	BCH	2	2	9	5	7	12	6	6	1	0			25	25	50
	BIO	2	0	5	2	10	10	15	0	0	0			32	12	44
	CHM	0	0	4	3	13	6	6	1	0	0			23	10	33
	CSC	0	0	18	2	22	3	20	1	3	0			63	6	69
	MTS	0	0	5	2	10	6	4	0	0	0			19	8	27
	MCEB	0	1	8	13	20	17	5	3	1	0			34	34	68
	PHS	0	0	11	1	20	0	15	1	1	0			47	2	49
	STS	0	0	2	0	10	5	11	2	0	0			23	7	30
	Subtotal	4	3	62	28	112	59	82	14	6	0			266	104	370

COLLEGE	DEPT	CLASS OF DEGREE										Un-classified		TOTAL		GRAND TOTAL
		1ST CLASS		2ND CLASS UPPER		2ND CLASS LOWER		3RD CLASS		PASS		M	F	M	F	
		M	F	M	F	M	F	M	F	M	F	M	F	M	F	
COLPLANT	CPT	0	0	11	8	15	9	8	0	0	0			34	17	51
	HRT	0	0	11	9	20	5	9	1	0	0			40	15	55
	PBST	0	0	15	8	14	8	5	1	0	0			34	17	51
	PPCP	0	0	9	8	14	10	2	4	1	0			26	22	48
	SSLM	0	1	8	6	26	8	9	2	0	0			43	17	60
Subtotal		0	1	54	39	89	40	33	8	1	0			177	88	265
COLVET	VET											16	7	16	7	23
Total		17	13	329	195	451	242	184	52	14	2	16	7	1011	511	1522
		30		524		693		236		16		23		1,522		

Figure 7: Graduate Output by Class of Degree and Gender for 2009/2010 Academic Session

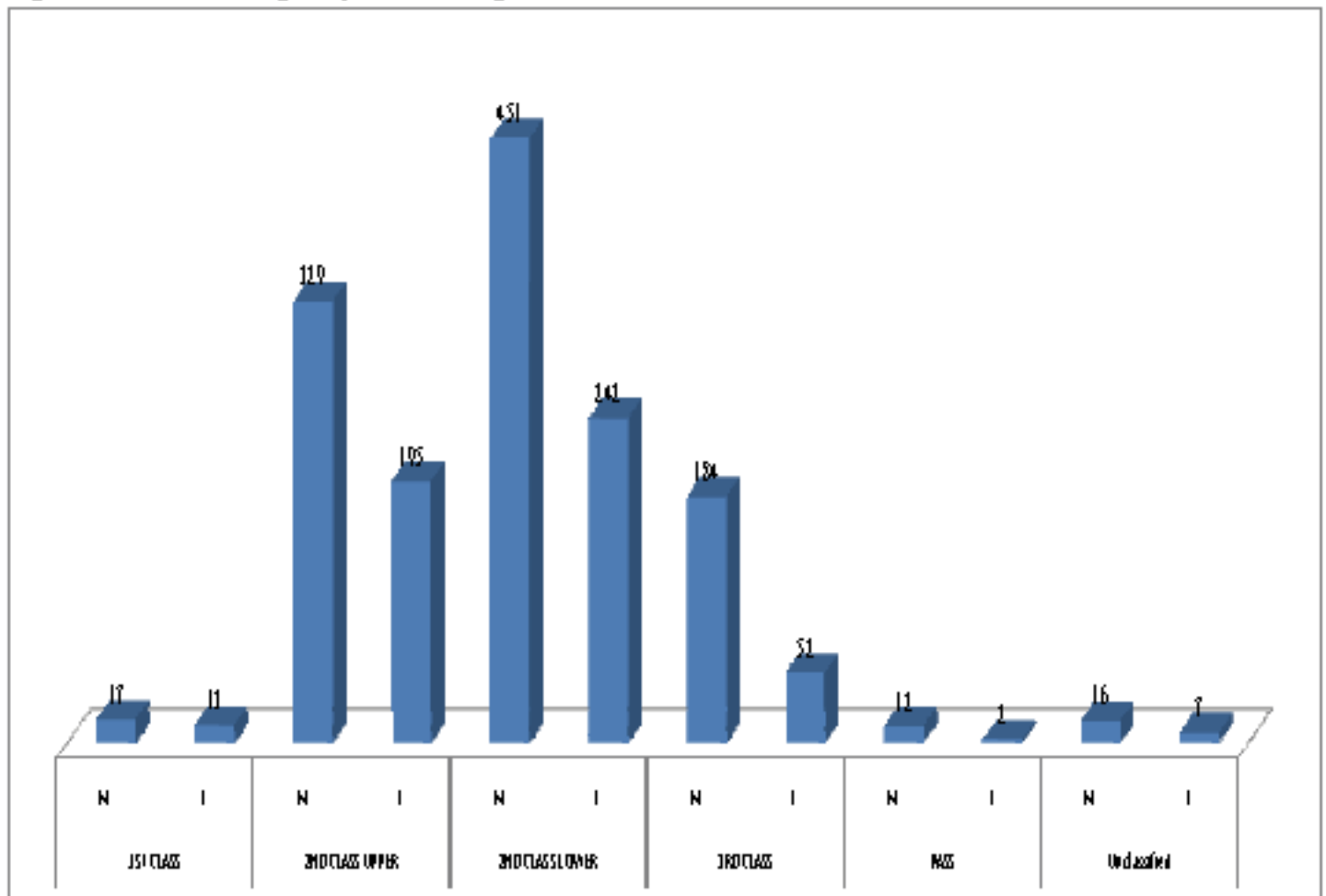


Figure 8: First Class Graduates since Inception (1989/1990 -2010/2011 Academic Sessions)

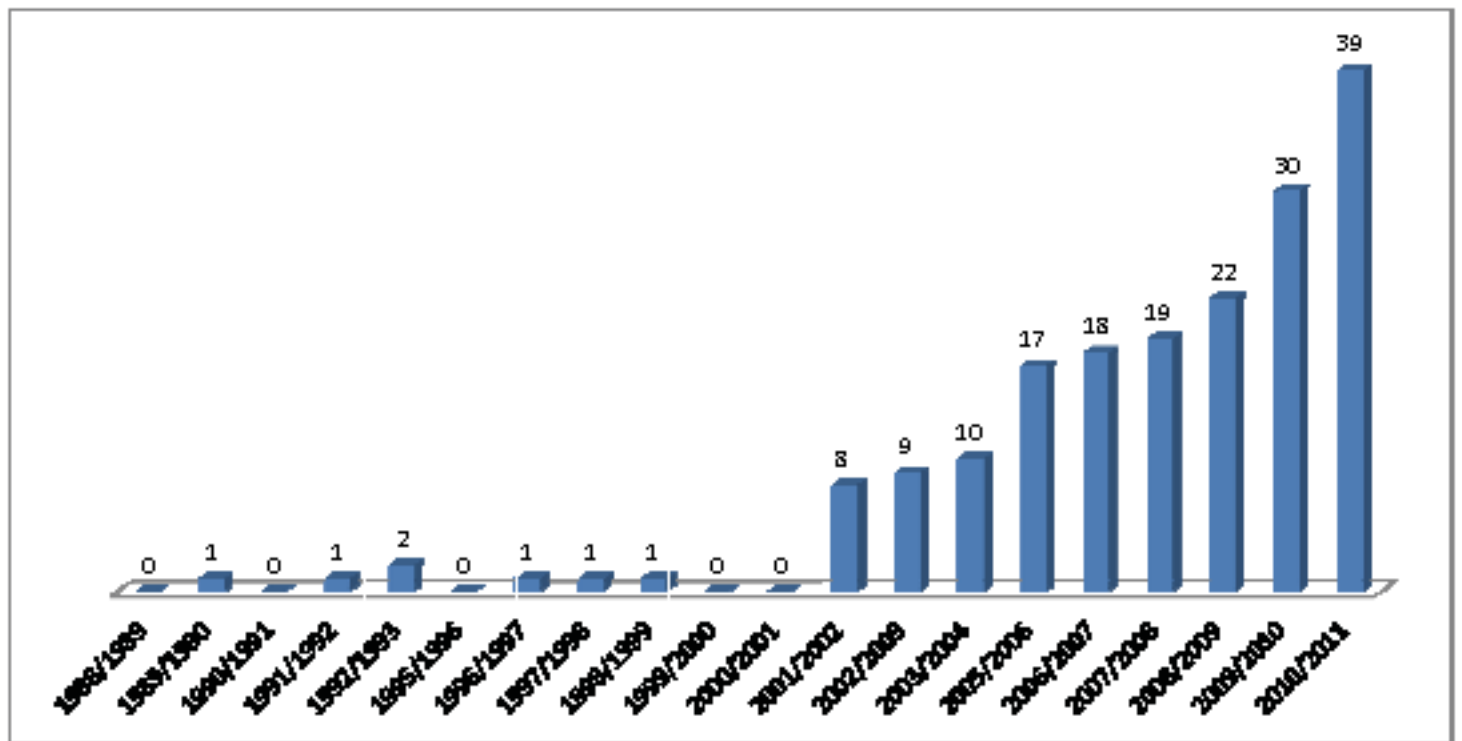


Table 21: Graduate Output by Class from 2005/2006 to 2010/2011 Academic Sessions

Year	CLASS OF DEGREE						
	1st Class	2nd Class Upper	2nd Class Lower	3rd Class	Pass	Unclassified	Total
2010/11	39	473	607	191	17	28	1,355
2009/10	30	524	693	236	16	23	1,522
2008/09	22	499	680	173	15	25	1,414
2007/08	19	322	598	165	44	14	1,162
2006/07	18	307	485	184	28	-	1,022
2005/06	17	310	395	106	45	-	873

Figure 9: Graduate Output by Class from 2006/2007 to 2010/2011 Academic Sessions

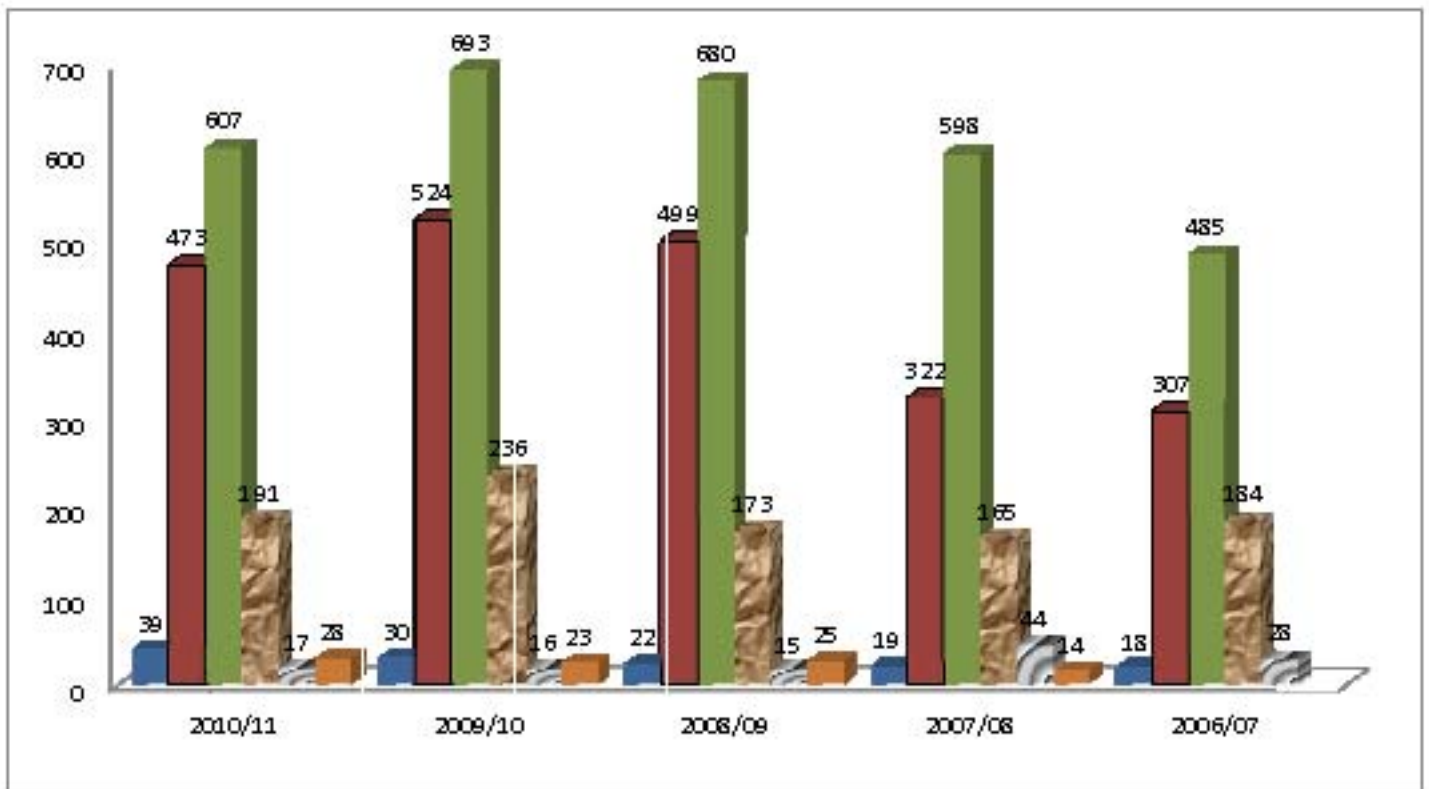


Figure 10: Postgraduate Student Output from 1998/1999 to 2009/2010 Academic Session

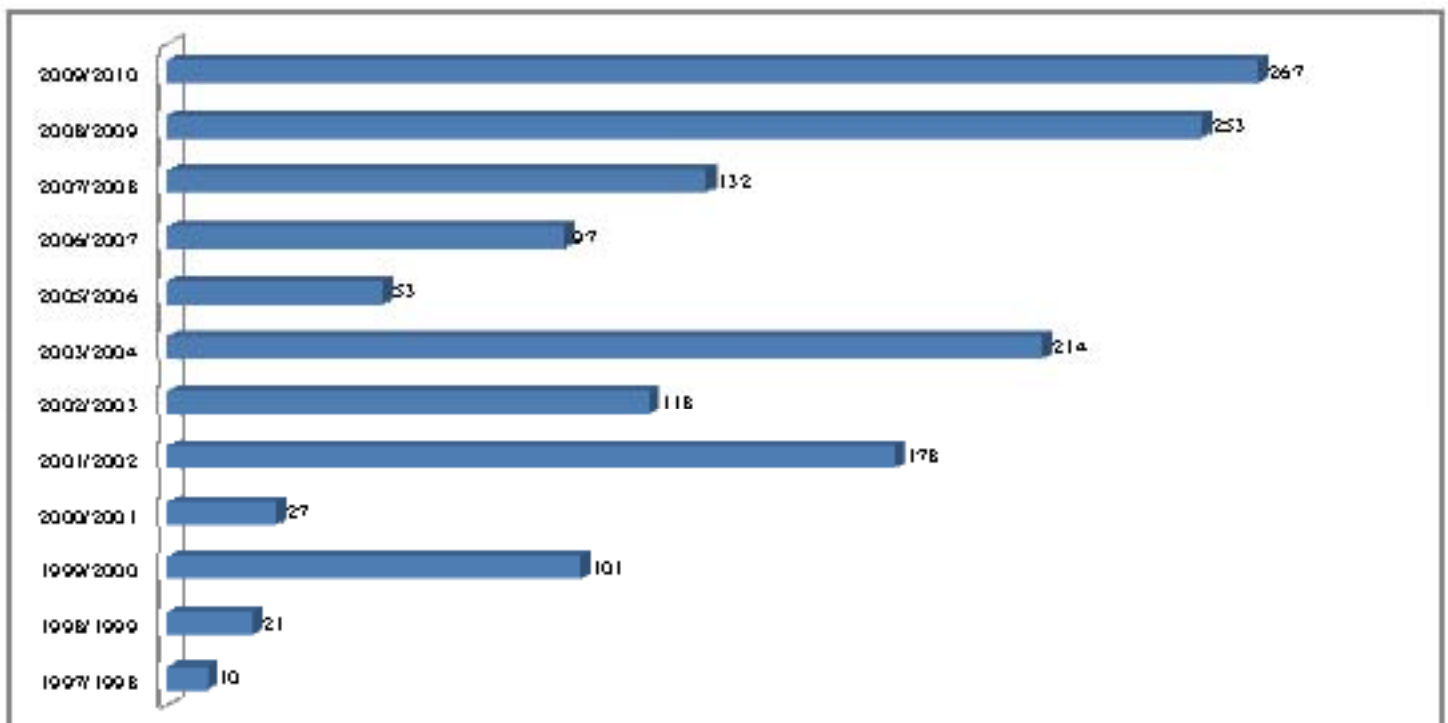


Figure 11: Graduation Pattern- Postgraduate School from 1998/1999 to 2009/2010 Academic Session

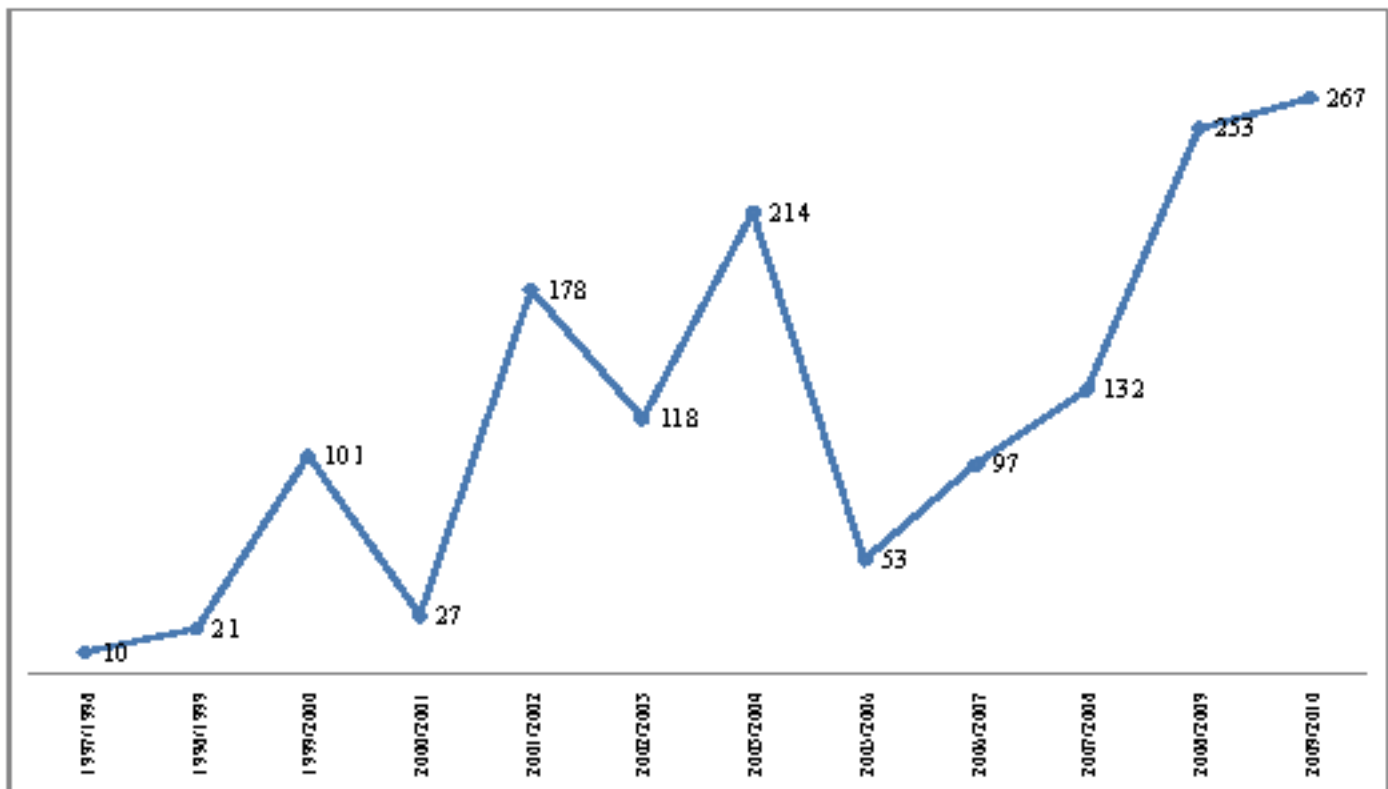


Figure 12: Postgraduate Student Output for 2009/2010 Academic Session

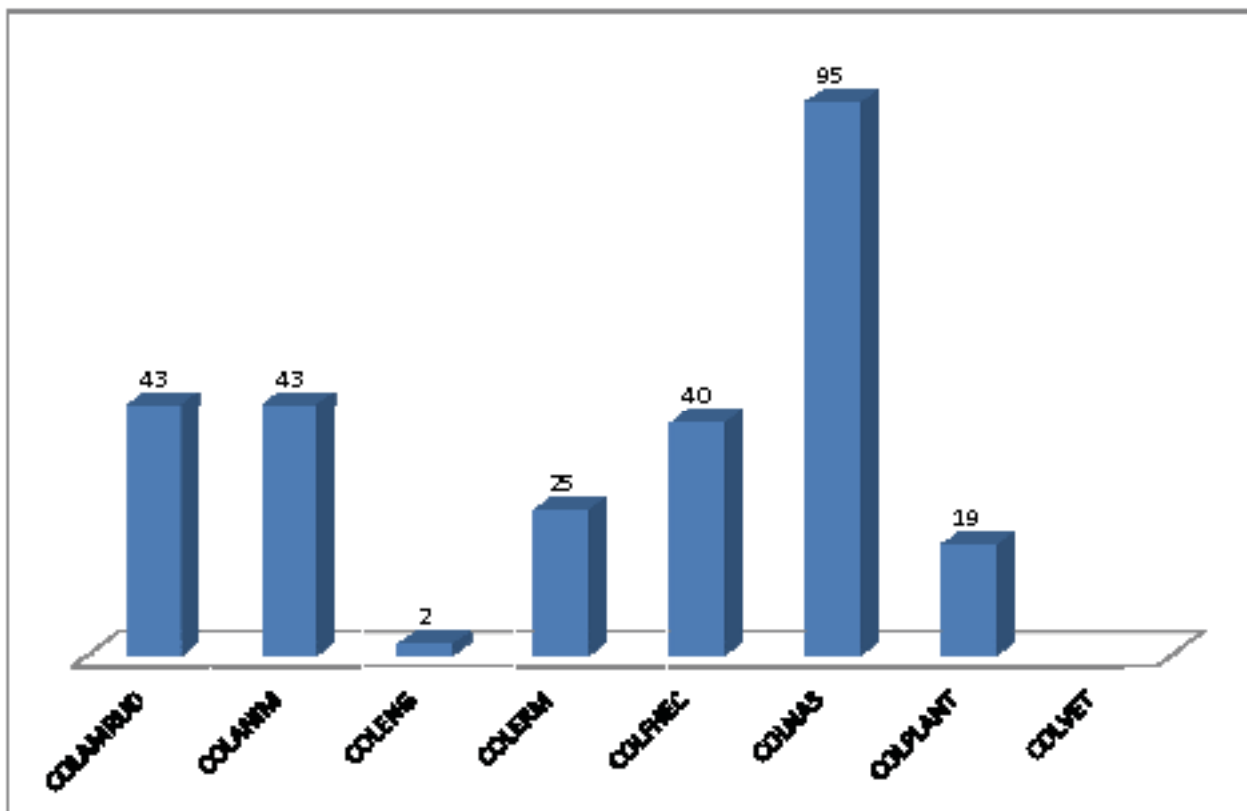


Table 22: Postgraduate Output by Gender and Class of Degree for 2009/2010 Academic Session

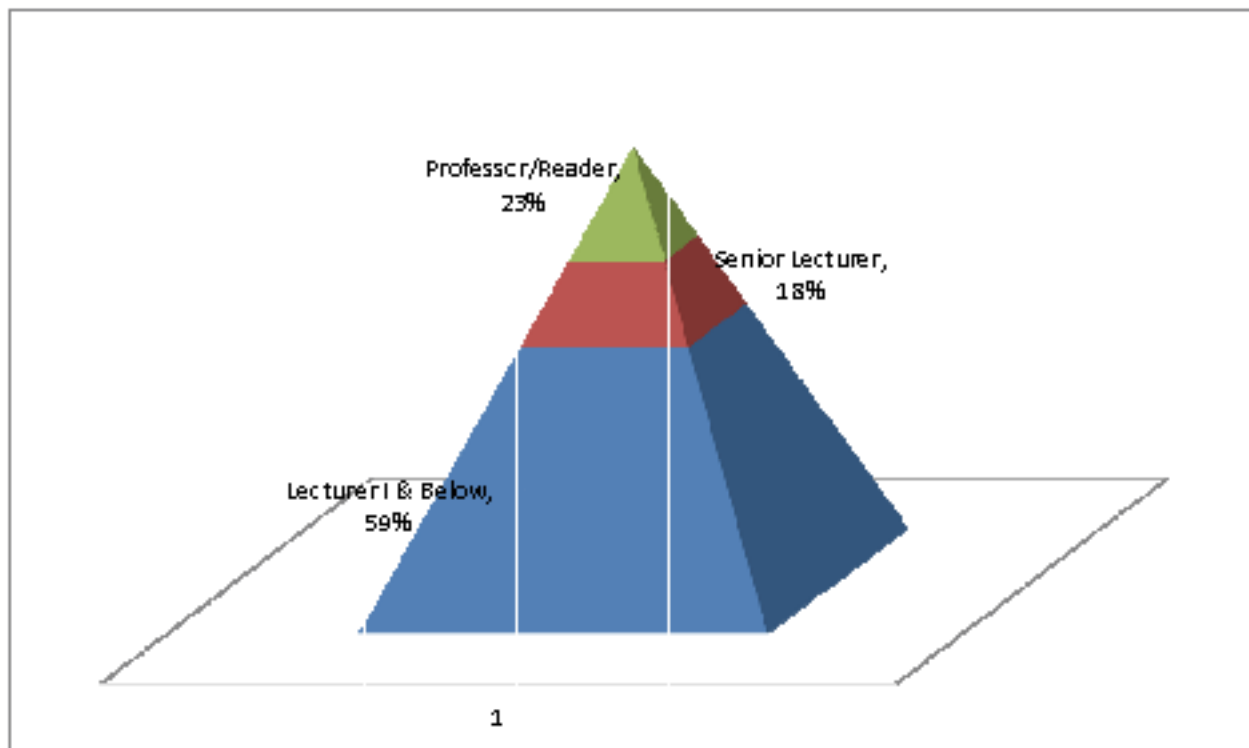
COLLEGE	DEPT	CLASS OF DEGREE						TOTAL
		PhD	MASTERS	MBA	PGD	MICT	MEM	
COLAMRUD	AEFM	2	8	18			0	28
	AERD	2	8		3			13
	AGAD							0
	CGNS		2					2
Sub total		4	18	18	3	0	0	43
COLANIM	ABG	2	2					4
	ANN	3	12					15
	ANP	2	2					4
	APH	2	13		1			16
	PRM	1	3					4
Sub total		10	32	0	1	0	0	43
COLENG	AGE	1						1
	CVE							0
	ELE							0
	MCE	1						1
Sub total		2	0	0	0	0	0	2
COLERM	AQFM	2	3					5
	EMT	2	10					12
	FWM	5	1					6
	WRMA	1	1					2
Sub total		10	15	0	0	0	0	25
COLFHEC	FSM							0
	FST	1	12					13
	HSM		3		16			19
	NTD	1	7					8
Sub total		2	22	0	16	0	0	40
COLNAS	BCH		1					1
	BIO	1	6					7
	CHM	1	1					2
	CSC	3	6		34	16		59
	MTS		2					2
	MCB	3	8					11
	PHS	2						2
	STS	1	1		9			11
Sub total		11	25	0	43	16	0	95
COLPLANT	CPT	2	4					6
	HRT	1						1
	PBST	3	6					9
	PPCP	3						3
	SSLM	0						0
Sub total		9	10	0	0	0	0	19
COLVET	VET	0						
Total		48	122	18	63	16	0	267

SECTION 3
STAFF STATISTICS

Table 23: Academic Staff by Rank and Gender as at December, 2011

RAN	MALE	FEMALE	TOTAL
Professor	80	13	93
Reader	28	8	36
Senior Lecturer	70	24	94
Lecturer I	104	32	136
Lecturer II	78	41	119
Assistant Lecturer	34	18	52
Junior Research Fellow	24	13	37
TOTAL	418	149	567

Figure 13: Pyramidal Structure of Academic Staff as at December, 2011



NUC Recommended Ratio – 20% Professor: 35% Senior Lecturer: 45% Lecturer I and Below

Table 24: Academic Staff Qualification as at December, 2011

Department	With PhD		Without PhD		Total		
	M	F	M	F	M	F	T
COLAMRUD							
AEFM	12	0	3	3	15	3	18
AERD	9	3	2	3	11	6	17
AGAD	4	2	0	0	4	2	6
CGNS	4	5	1	2	5	7	12
Sub-Total	30	9	6	8	36	17	53
COLANIM							
ABG	5	2	4	0	9	2	11
ANN	9	2	2	0	11	2	13
ANP	7	0	2	2	9	2	11
APH	10	2	4	0	14	2	16
PRM	3	1	1	2	4	3	7
Sub-Total	34	7	13	4	47	11	58
COLENG							
AGE	6	0	5	0	11	0	11
CVE	5	0	5	1	10	1	11
ELE	2	0	6	2	8	2	10
MCE	5	0	3	1	8	1	9
Sub-Total	18	0	19	4	37	4	41
COLERM							
AQFM	10	3	5	1	15	4	19
EMT	7	2	5	2	12	4	16
FWM	13	1	2	1	15	2	17
WRMA	7	1	2	0	9	1	10
Sub-Total	37	7	14	4	51	11	62
COLFHEC							
FSM	3	1	1	0	4	1	5
FST	8	3	1	3	9	6	15
HSM	0	7	1	1	1	8	9
NUD	4	5	0	1	4	6	10
Sub-Total	15	16	3	5	18	21	39
COLMAS							
ACC	0	0	3	0	3	0	3
BEM	2	1	1	0	3	1	4
BFN	0	0	3	0	3	0	3
ETS							
ECO	4	1	1	0	5	1	6
Sub-Total	6	2	8	0	14	2	16

Department	With PhD		Without PhD		Total		
	M	F	M	F	M	F	T
COLNAS							
BCH	3	1	3	2	6	3	9
BIO	11	2	0	0	11	2	13
CHM	12	5	7	0	19	5	24
CSC	6	2	7	2	13	4	17
MTS	9	0	5	1	14	1	15
MCB	4	7	1	1	5	8	13
PHS	11	1	6	1	17	2	19
STS	6	1	0	0	6	1	7
Sub-Total	57	19	29	7	86	26	112
COLPLANT							
CPT	9	1	1	0	10	1	11
HRT	6	0	3	1	9	1	10
PBST	6	2	4	2	10	4	14
PPCP	12	1	0	1	12	2	14
SSLM	9	2	2	2	11	4	15
Sub-Total	42	6	10	6	52	12	64
COLVET							
VETANAT	1	0	3	1	4	1	5
VETPHY & PHARM	0	0	6	2	6	2	8
VETMICRO & PAR	1	0	6	2	7	2	9
VETPATH	2	0	5	0	7	0	7
VETMED & SUR	2	1	7	3	9	4	13
VETPUB HEALTH & REP	1	1	4	3	5	4	9
Sub-Total	7	2	31	11	38	13	51
OTHER ACADEMIC CENTRES							
AMREC	2	2	2	4	4	6	10
BIOTECH	0	0	3	0	3	0	3
IFSERAR	11	5	2	0	13	5	18
INHURD	0	0	7	5	7	5	12
LIBRARY	1	2	14	11	15	13	28
Sub-Total	14	9	28	20	42	29	71
TOTAL	259	77	163	68	418	149	567
	336		231		567		

Table 25: Percentage of Academic Staff with PhD as at December, 2011.

COLLEGE	No. With PhD	% With PhD	No. Without PhD	% Without PhD
COLAMRUD	39	74%	14	26%
COLANIM	40	70%	18	30%
COLENG	18	44%	23	56%
COLERM	44	70%	18	30%
COLFHEC	31	79%	8	21%
COLMAS	8	50%	8	50%
COLNAS	76	68%	36	32%
COLPLANT	48	75%	16	25%
COLVET	9	18%	42	82%
AMREC	4	40%	6	60%
BIOTECH	0	0%	3	100%
IFSERAR	16	89%	2	11%
INHURD	0	0%	12	100%
LIBRARY	3	11%	25	89%
TOTAL	336	60%	231	40%

Figure 14: Proportion of Academic Staff with and without PhD as at December, 2011

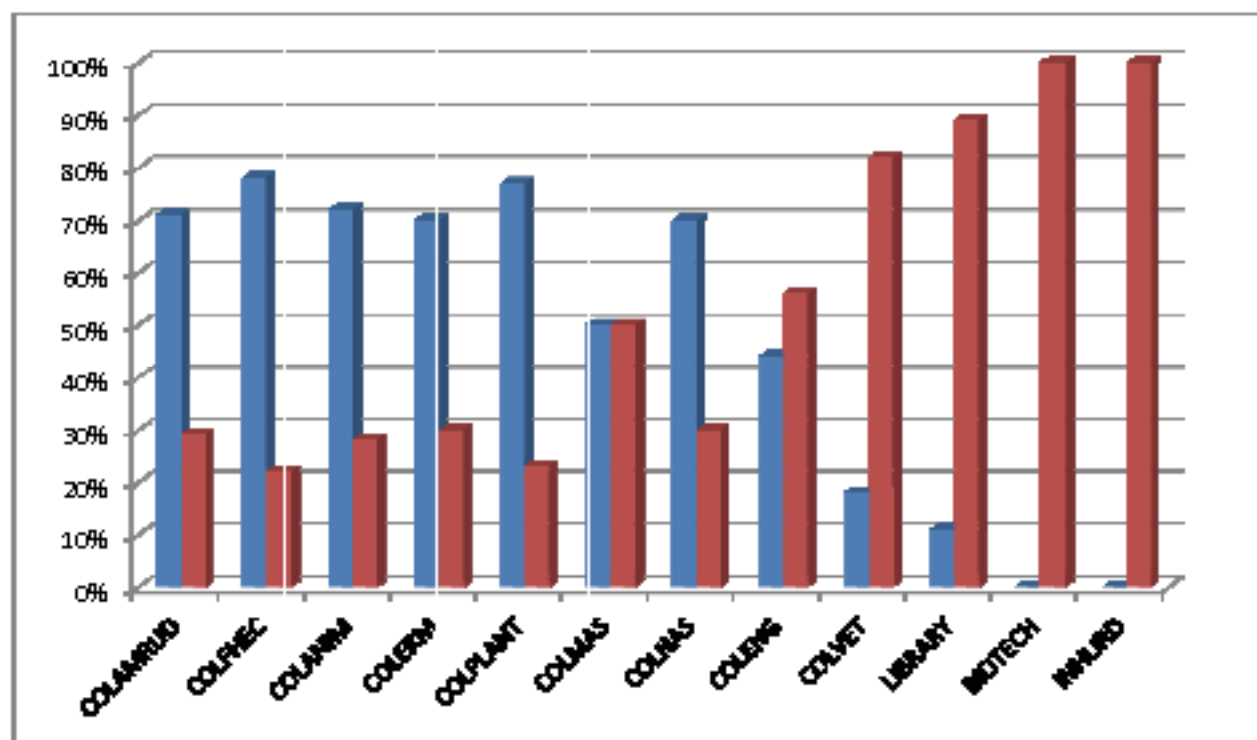


Figure 15: Academic Staff Mix by Gender as at December, 2011

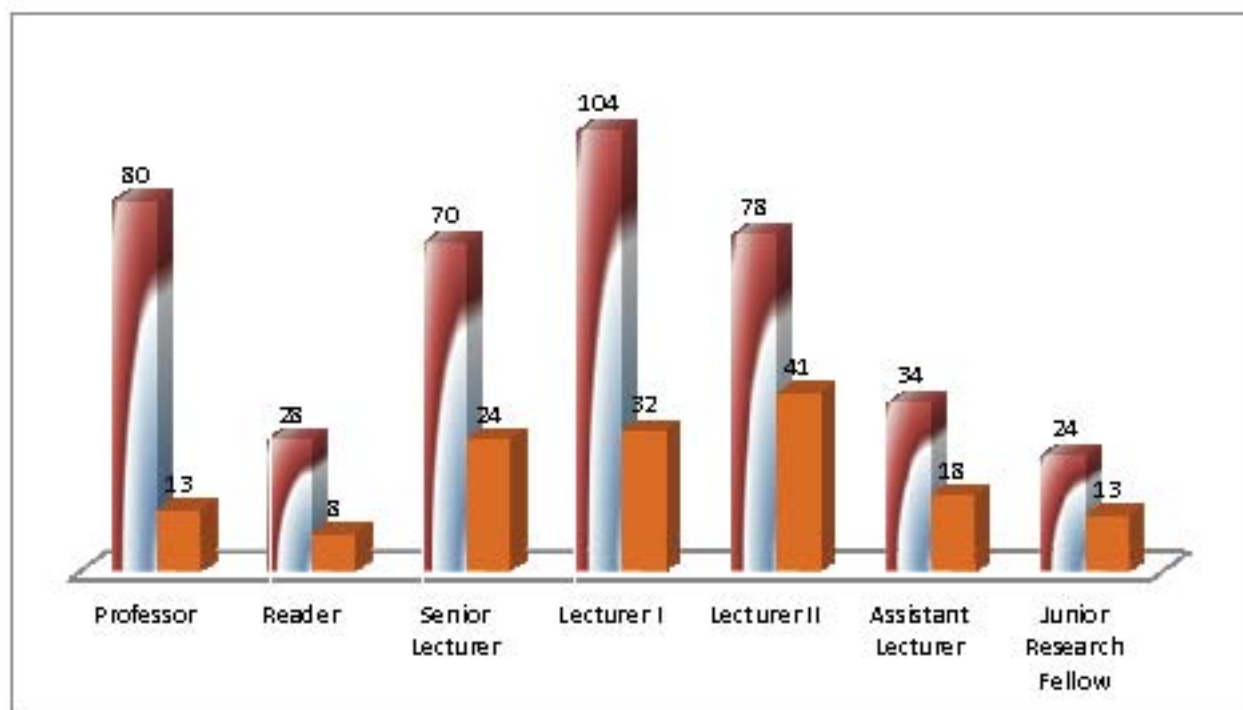


Figure 16: Academic Staff Mix by Rank as at December, 2011

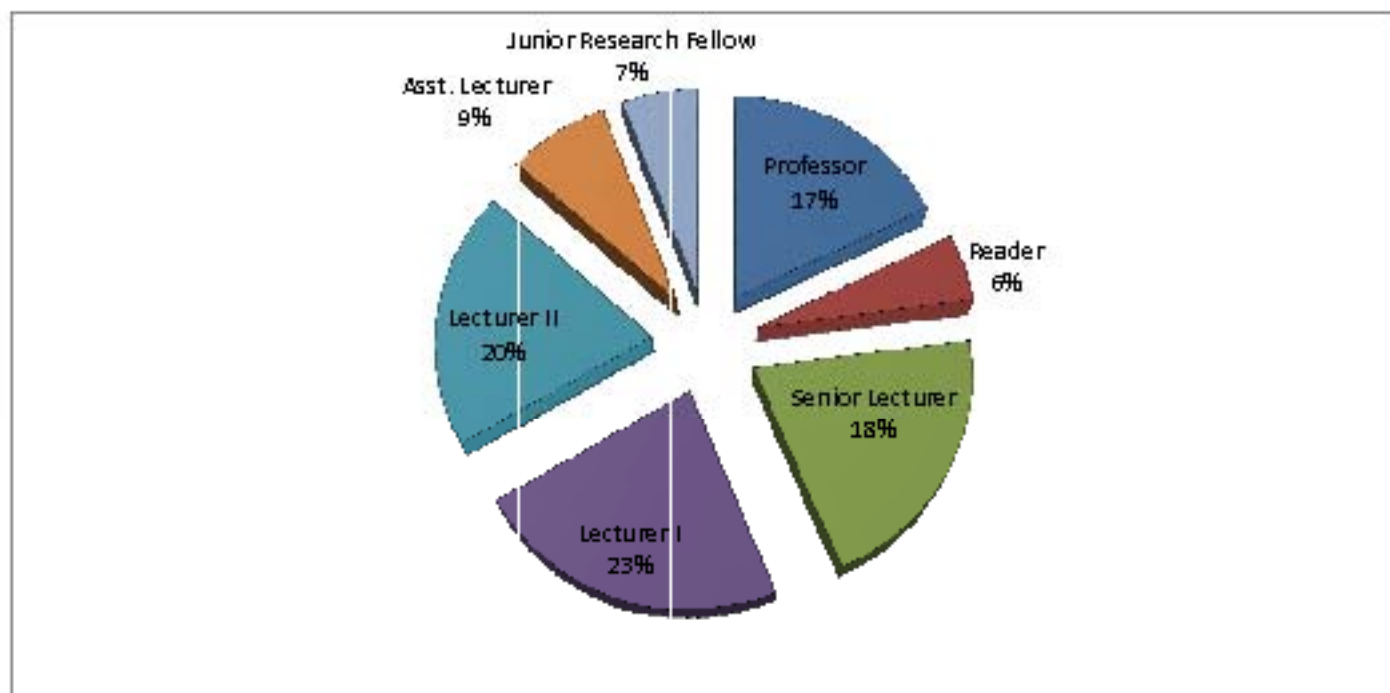


Figure 17: Academic Staff by Gender as at December, 2011

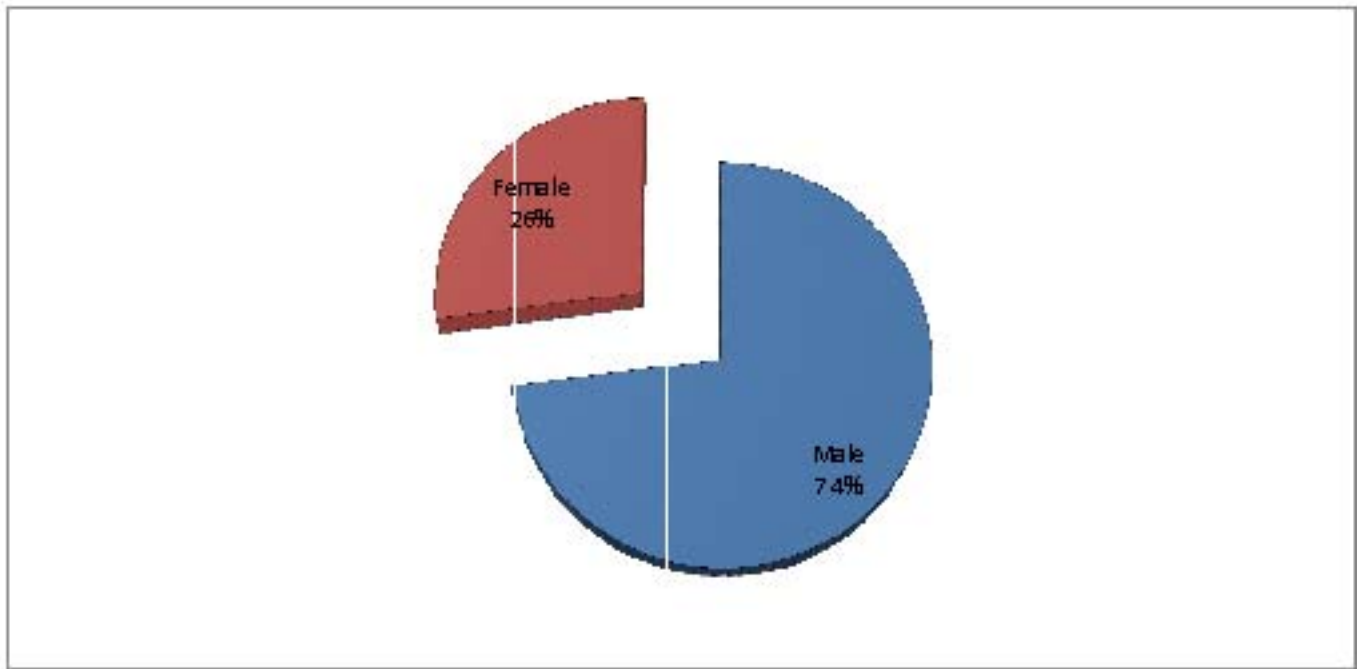


Figure 18: Academic Staff Age Distribution as at December, 2011

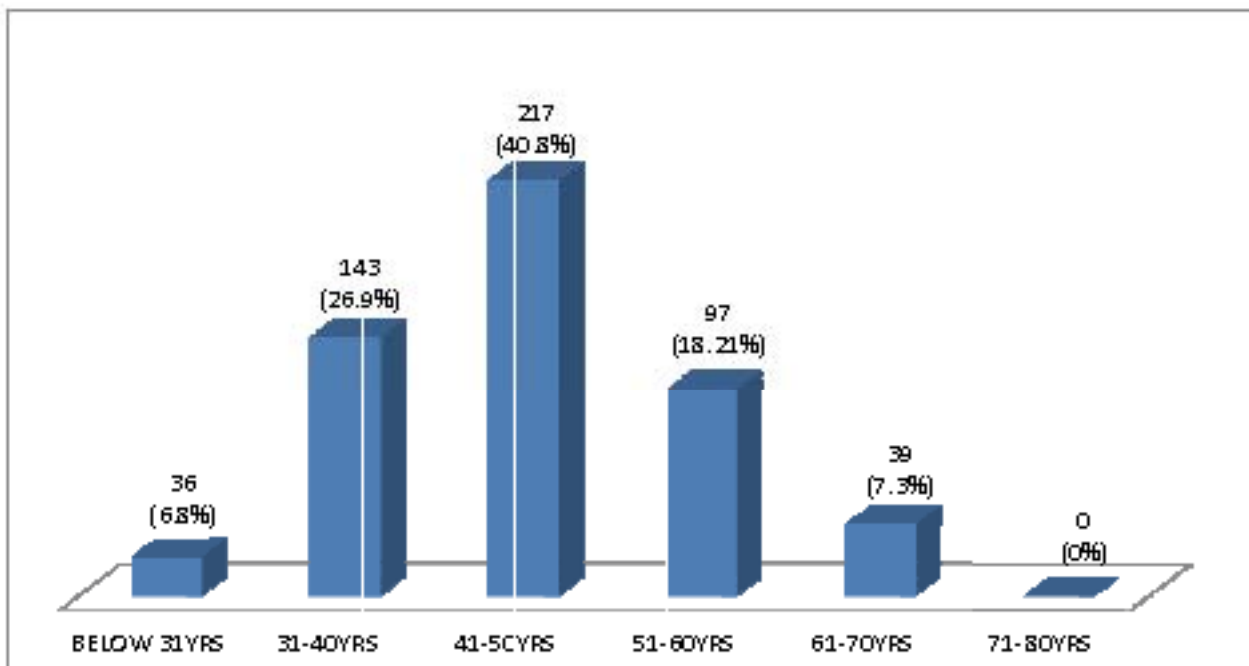


Table 26: Number of Inaugural Lecture Delivered from 2007 to 2011

Year	Number
2007	2
2008	2
2009	2
2010	4
2011	3

Table 27: Senior Non-Teaching Staff as at December, 2011

GRADE LEVEL	ADMINISTRATIVE		TECHNICAL/ PROFESSIONAL		SECRETARIAL		TOTAL		
	M	F	M	F	M	F	M	F	T
CONTISS 15	1	1	6	2	0	0	7	3	10
CONTISS 14	5	3	12	2	0	0	17	5	22
CONTISS 13	5	4	19	16	0	2	24	22	46
CONTISS 12	0	1	23	9	0	3	23	13	36
CONTISS 11	6	2	27	22	0	1	33	25	58
CONTISS 10	0	0	1	3	0	0	1	3	4
CONTISS 9	5	6	36	18	0	5	41	29	70
CONTISS 8	20	10	49	39	5	40	74	89	163
CONTISS 7	29	30	119	61	2	21	150	112	262
CONTISS 6	5	7	42	17	1	18	48	42	90
TOTAL	76	64	334	189	8	90	418	343	761

Table 28: Junior Staff as at December, 2011

GRADE LEVEL	ADMINISTRATIVE		TECHNICAL/ PROFESSIONAL		SECRETARIAL		TOTAL		
	M	F	M	F	M	F	M	F	T
CONTISS 5	16	9	48	23	0	13	64	45	109
CONTISS 4	23	18	75	17	0	7	98	42	140
CONTISS 3	28	30	114	39	0	1	142	70	212
CONTISS 2	4	1	20	7	0	0	24	8	32
CONTISS 1	0	0	20	9	0	0	20	9	29
TOTAL	71	58	277	95	0	21	348	174	522

Figure 19: Non-Teaching Staff by Cadre and Gender as at December, 2011

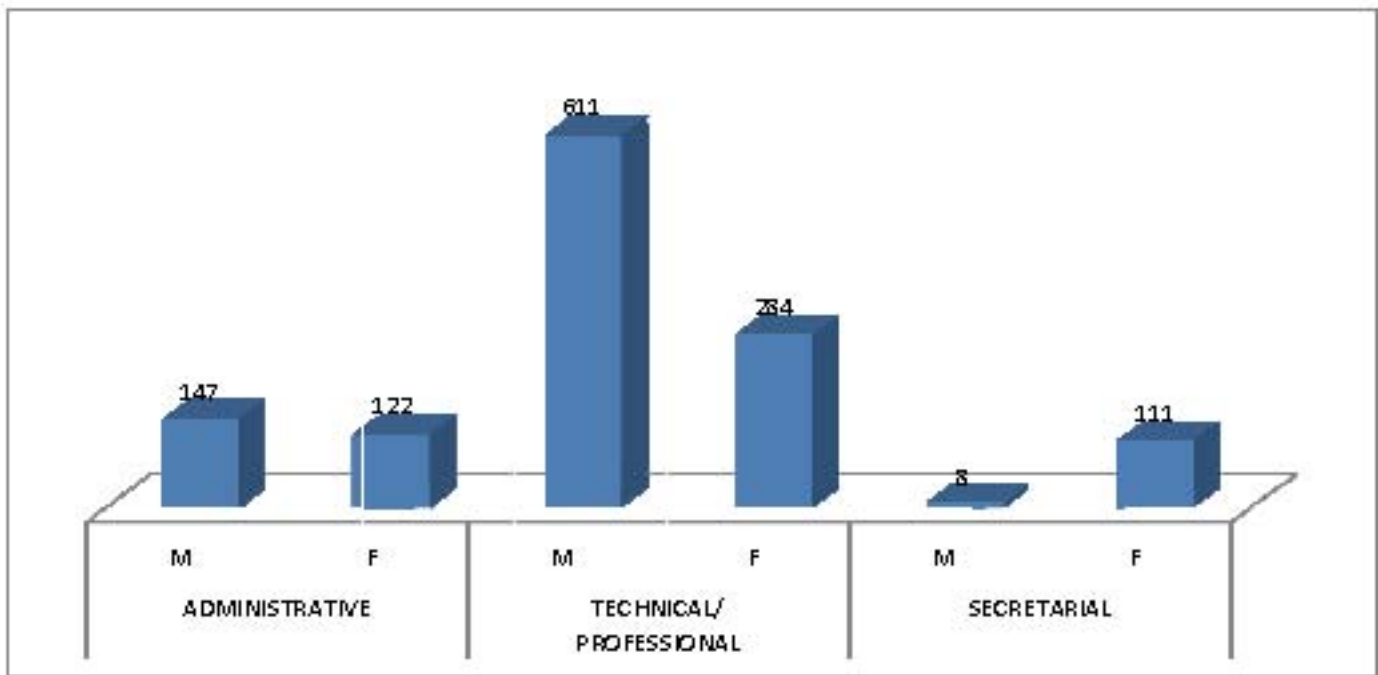


Figure 20: Senior Non-Teaching Staff as at December, 2011

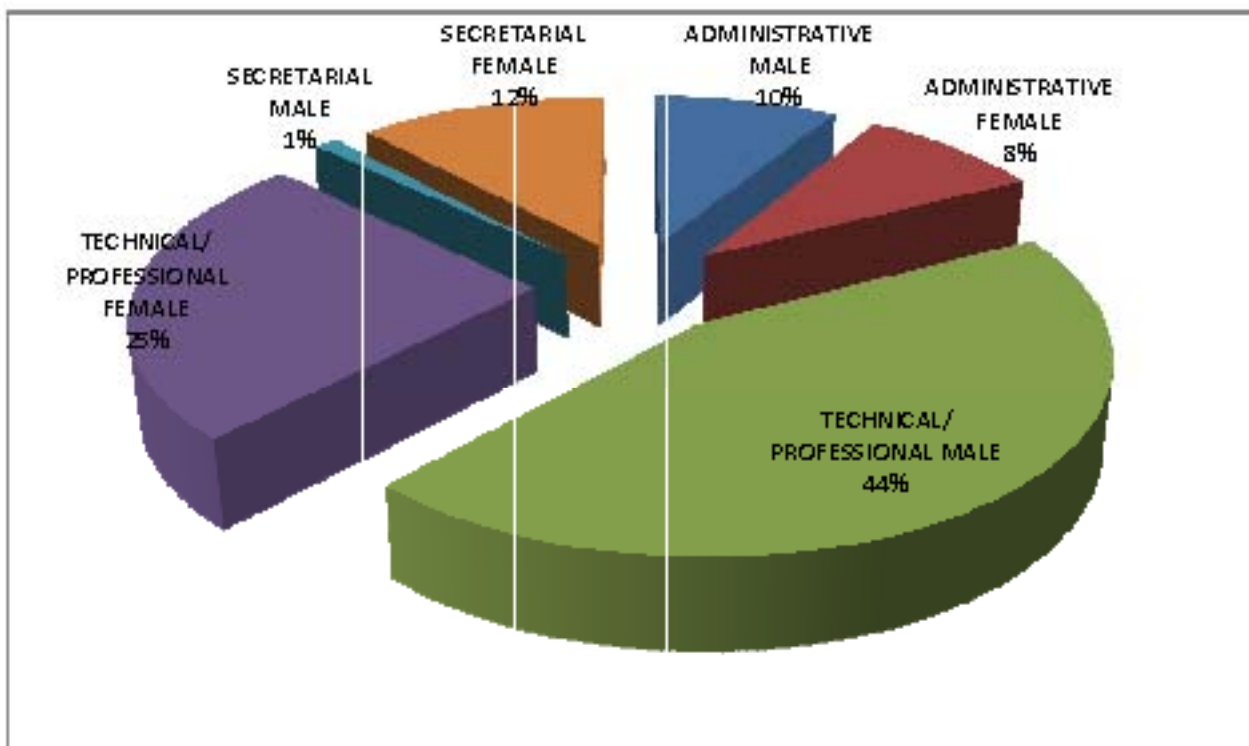


Figure 21: Age Distribution of Senior Non-Teaching Staff as at December, 2011

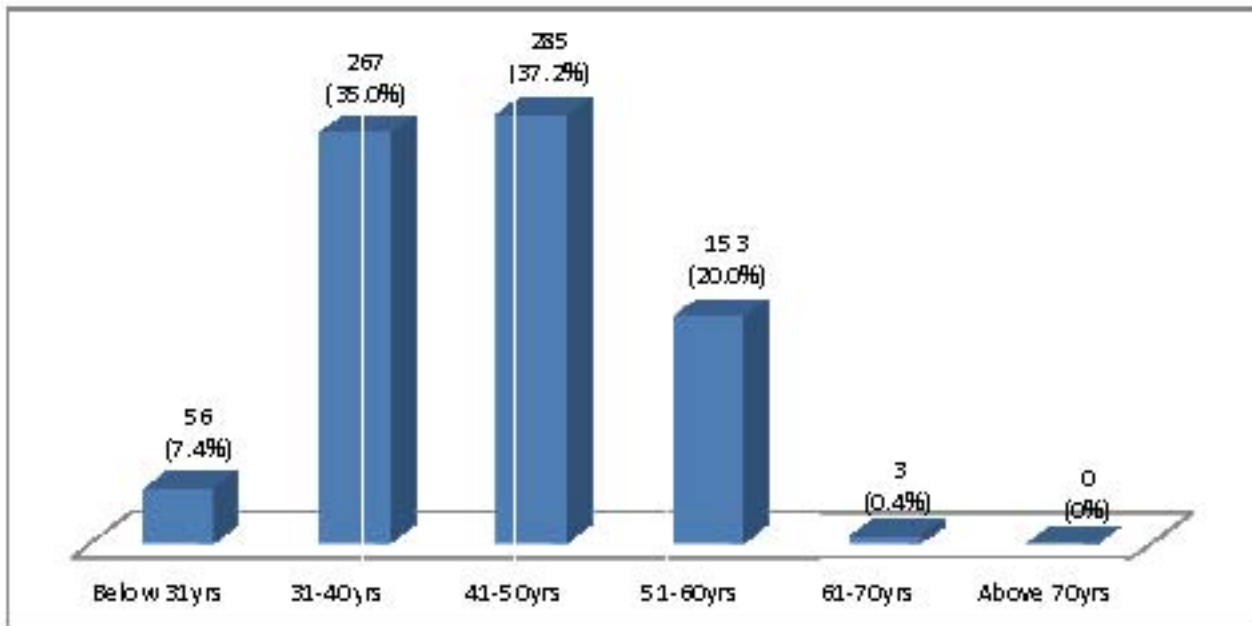


Figure 22: Junior Non-Teaching Staff as at December, 2011

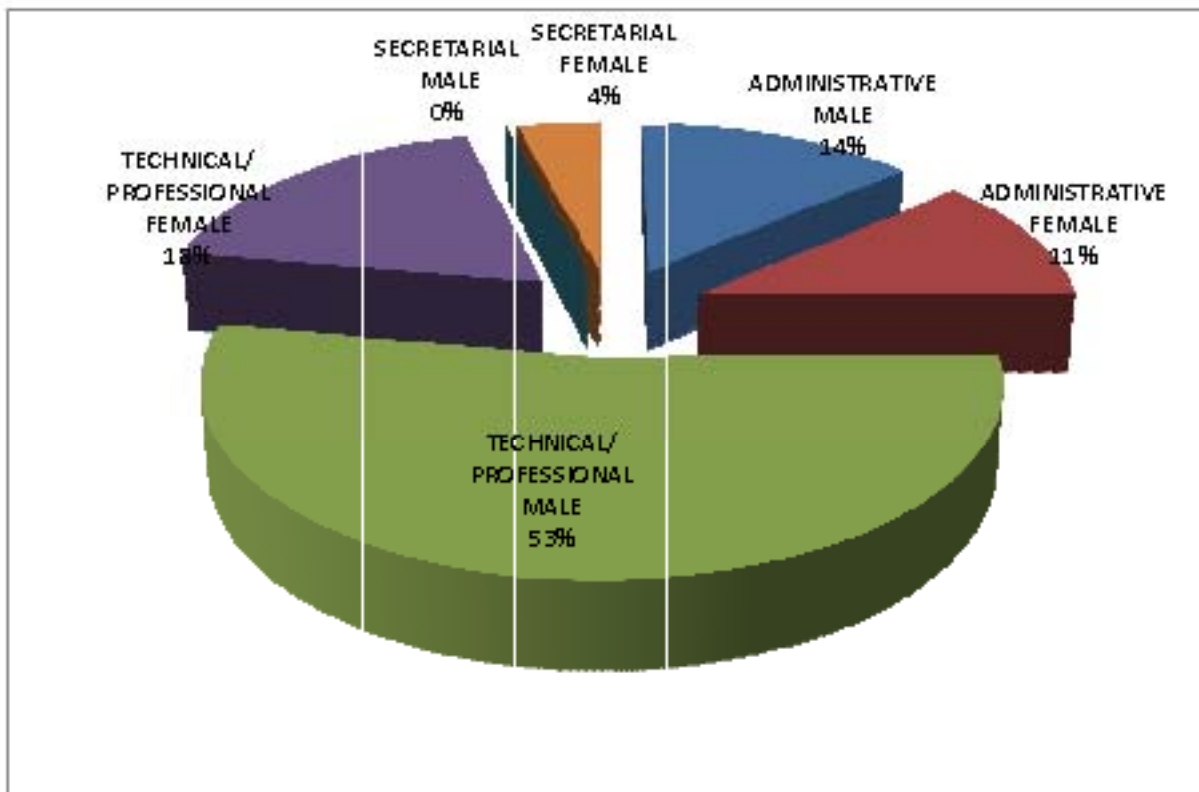


Figure 23: Age Distribution for Junior Staff as at December, 2011

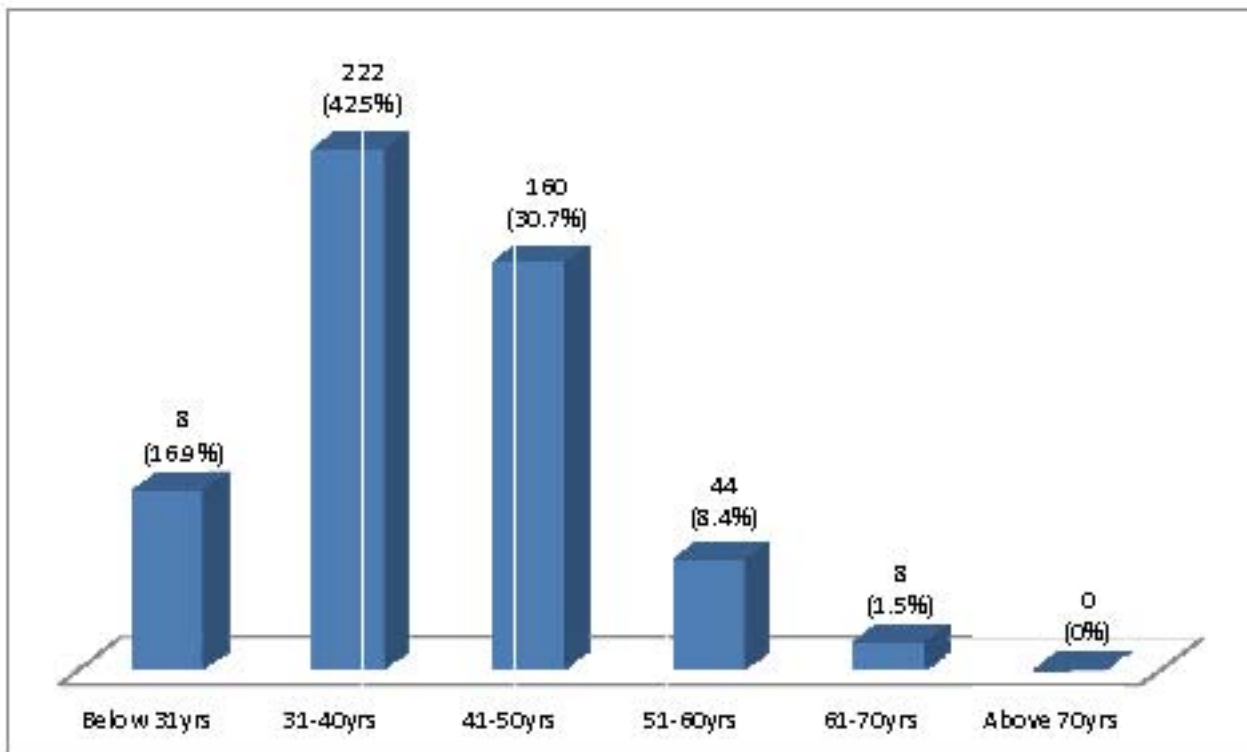


Figure 24: Percentage Distribution of Non-Teaching Staff by Cadre and Gender as at December, 2011

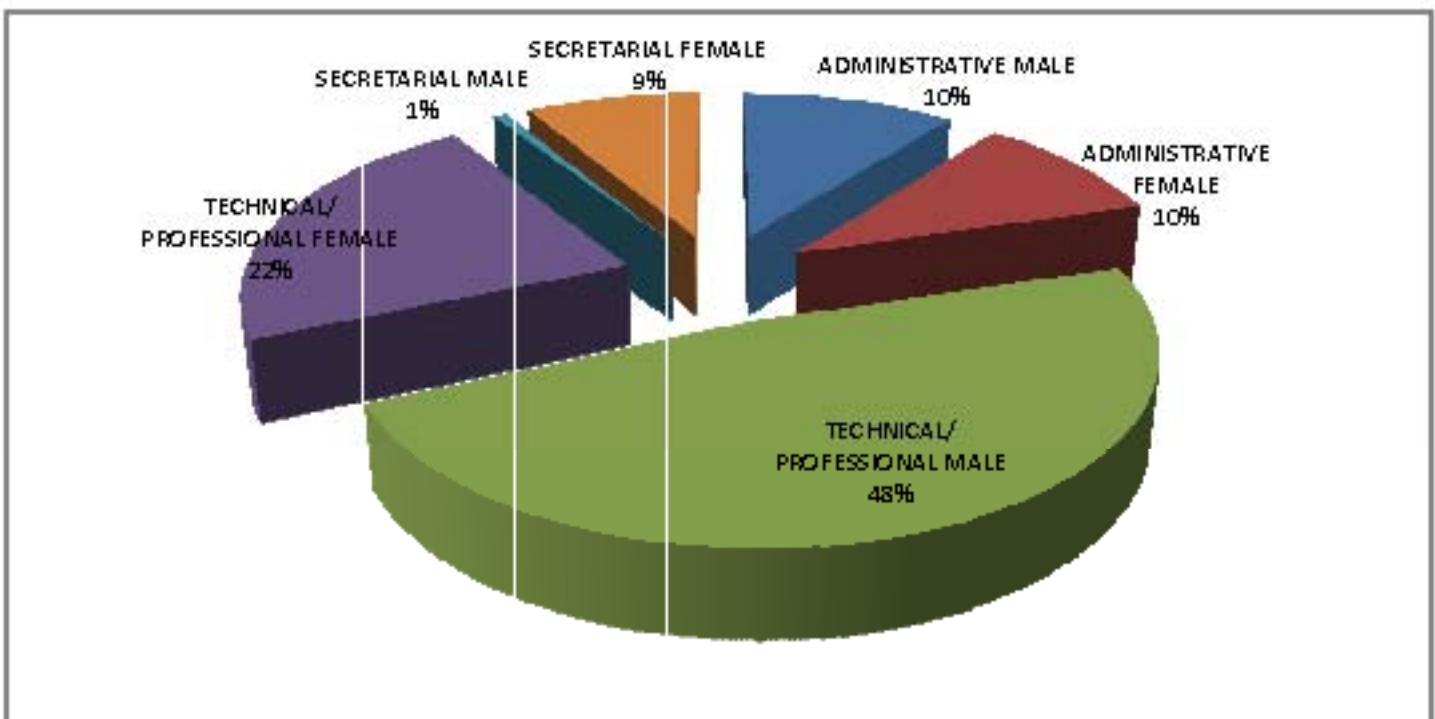


Table 29: Non-Teaching Staff by Category and Gender from 2007 to 2011

Year		CATEGORY	MALE	FEMALE	TOTAL	
2007	Senior Non-Teaching	Technical Staff	145	47	192	
		Administrative Staff:				
		a) Non Secretarial Staff	115	93	208	
			b) Secretarial Staff	9	72	81
			Total	269	212	481
	Junior Staff	Technical Staff	270	37	307	
		Administrative Staff:				
a) Non Secretarial Staff		48	74	122		
b) Secretarial Staff		1	11	12		
		Total	49	85	541	
2008	Senior Non-Teaching	Technical Staff	208	77	285	
		Administrative Staff:				
		a) Non Secretarial Staff	82	100	182	
			b) Secretarial Staff	6	102	108
			Total	88	202	575
	Junior Staff	Technical Staff	222	74	296	
		Administrative Staff:				
a) Non Secretarial Staff		59	70	129		
b) Secretarial Staff		2	14	16		
		Total	61	84	441	
2009	Senior non-Teaching	Technical Staff	232	90	322	
		Administrative Staff:				
		a) Non Secretarial Staff	133	123	256	
			b) Secretarial Staff	11	90	101
			Total	376	303	679
	Junior Staff	Technical Staff	318	101	419	
		Administrative Staff:				
a) Non Secretarial Staff		64	76	140		
b) Secretarial Staff		0	13	13		
		Total	382	190	572	
2010	Senior non-Teaching	Technical Staff	324	182	506	
		Administrative Staff:				
		a) Non Secretarial Staff	76	63	139	
			b) Secretarial Staff	9	72	81
			Total	396	317	726
	Junior Staff	Technical Staff	277	100	377	
		Administrative Staff:				

Year		CATEGORY	MALE	FEMALE	TOTAL
		a) Non Secretarial Staff	68	61	129
		b) Secretarial Staff	0	21	21
		Total	345	182	527
2011	Senior non-Teaching	Technical Staff	334	189	523
		Administrative Staff:			
		a) Non Secretarial Staff	76	64	140
		b) Secretarial Staff	8	90	98
		Total	418	343	761
	Junior Staff	Technical Staff	277	95	372
		Administrative Staff:			
		a) Non Secretarial Staff	71	58	129
		b) Secretarial Staff	0	21	21
		Total	348	174	522

Table 30: List of Inaugural Lectures Delivered from 1994 to 2011

Series	College	Dept.	Delivered By	Date	Topic
1	COLERM	FWM	Professor Julius Amioba Okojie	1994	Once Upon a Forest: A masterpiece of Creation
2	COLAMRUCS	AEFM	Professor Peter Adebola Okuneye	1995	Nigerian Agriculture on the Run: Refuse to move
3	COLANIM	ANN	Professor E.B. Oguntona	1996	Food, Animals and Human Nutrition in Nigeria
4	COLPLANT	HRT	Professor M.O.A. Fawusi	1997	Food Security and Beautiful Environment: The Siamese twins of Horticulture
5	COLNAS	CHM	Professor Ishola Adamson	1997	The Advantages of Dietary Fiber Modification of Metabolic Flux
6	COLAMRUCS	HSM	Professor (Mrs.) A.A. Addo	1998	Freedom from Hunger and Malnutrition: An Elusive Right of the Nigerian Child
7	COLANIM	APH	Professor Isreal Folorunso Adu	1998	The Lamentations of a Famished Industry
8	COLERM	FWM	Professor B.A. Ola-Adams	1999	Resource Utilisation and Sustainability: A Dilemma in National Development
9	COLNAS	MTS	Professor Adewale Roland Tunde Solarin	1999	Total Quality- A Mathematical Panacea for National Productivity Improvement
10	COLPLANT	HRT	Professor M.A.O. Oladokun	2000	Kola: A Tree of Life
11	COLANIM	ABG	Professor Olusegun Ayodeji Osinowo	2000	Be Fruitful and Multiply: The Blessing, the Livestock and the Quality of Life

Series	College	Dept.	Delivered By	Date	Topic
12	COLERM	WMA	Professor Olasumbo Martins	2001	Water Resources Management & Development in Nigeria: Issues & Challenges in a New Millennium
13	COLNAS	CHM	Professor Ighodalo Clement Eromosele	2002	Imperatives for a Virile Chemical Industry in Nigeria
14	COLPLANT	PBST	Professor T.A.O. Ladeinde	2002	The miracles of genetics and biotechnology for bumper harvest in the new millennium: mirage or reality
15	COLAMRUCS	FST	Professor Olusola Bandele Oye wole	2002	Powers at the Roots: Food and its Microbial Allies
16	COLANIM	ABG	Professor (Mrs.) Olufunmilayo Ayoka Adebambo	2003	Animal Breeds: A Nation's Heritage
17	COLERM	FWM	Professor Samuel Akinyele Onadeko	2004	Home on the Range: Crises, Consequences & Consolations
18	COLNAS	CHM	Professor Francis Olukayode Bamiro	2005	Understanding Chemistry with a View to Improving Service to Mankind: An Abysmal Adventure or a Realistic Ideal?
19	COLPLANT	SSLM	Professor Michael Tunde Adetunji	2005	Soil Quality for Ecological Security and Sustainable Agriculture
20	COLAMRUCS	FST	Professor Samuel Olusegun Awonorin	2006	Man, Food and Machinery: From Biological Systems to Physical Models in Food Preservation
21	COLANIM	ANN	Professor Chrystopher Friday Ijeoma Onwuka	2007	Browsing Goats and Sheep: Reaping the Wisdom in their Foolishness
22	COLANIM	APH	Professor Samuel Soladoye Abiola	2007	Poultry Farming: A Veritable Tool for Employment Generation and Poverty Alleviation
23	COLERM	WMA	Professor Niyi Jonathan Bello	2008	Perturbations in the Plant Environment: The Threats and Agro-Climatological Implications for Food Security
24	COLFHEC	NUD	Professor (Mrs.) Clara R.B. Oguntona	2008	The Travails of a Community Nutritionist in Nigeria
25	COLPLANT	PBST	Professor Omolayo Johnson Ariyo	2009	Genotype and Environment Interplay in Crop Production
26	COLANIM	ANN	Professor (Mrs.) Daisy Erubetine	2009	Revolutionising the Feed Industry for Increased Poultry Production
27	COLENG	AGE	Professor Samuel Babatope Adejuyigbe	2010	Manufacturing and Computer Aided Engineering: A Panacea for Wealth Creation
28	COLNAS	BIO	Professor David Adejare Agboola	2010	Waking the Seed from Slumber: Recipe for Successful Germinability

Series	College	Dept.	Delivered By	Date	Topic
29	COLVET	VPHR	Professor (Mrs.) Morenike Atinuke Dipeolu	2010	Health Meat for Wealth
30	COLAMRUD	AERD	Professor Akinwumi Moses Omotayo	2010	The Nigerian Farmer and the Elusive Crown
31	COLPLANT	HRT	Professor F.O. Olasantan	2011	Horticulture: The Under Exploited Goldmine in Africa
32	COLERM	AQFM	Professor Samuel Otubusin	2011	Water, Water, Water, Every-where... An Enigma
33	COLNAS	BIO	Professor Ayodele	2011	Flowers, Thorns and Thistles

Table 31: FUNAAB Staff Profile as at December, 2011

CATEGORY	M	F	TOTAL	PERCENTAGE
Academic	418	149	567	31%
Senior Non-Teaching	418	343	761	41%
Junior Non-Teaching	348	174	522	28%
TOTAL	1,184	666	1,850	100%

Figure 25: Staff by Category for 2010/2011 Academic Session

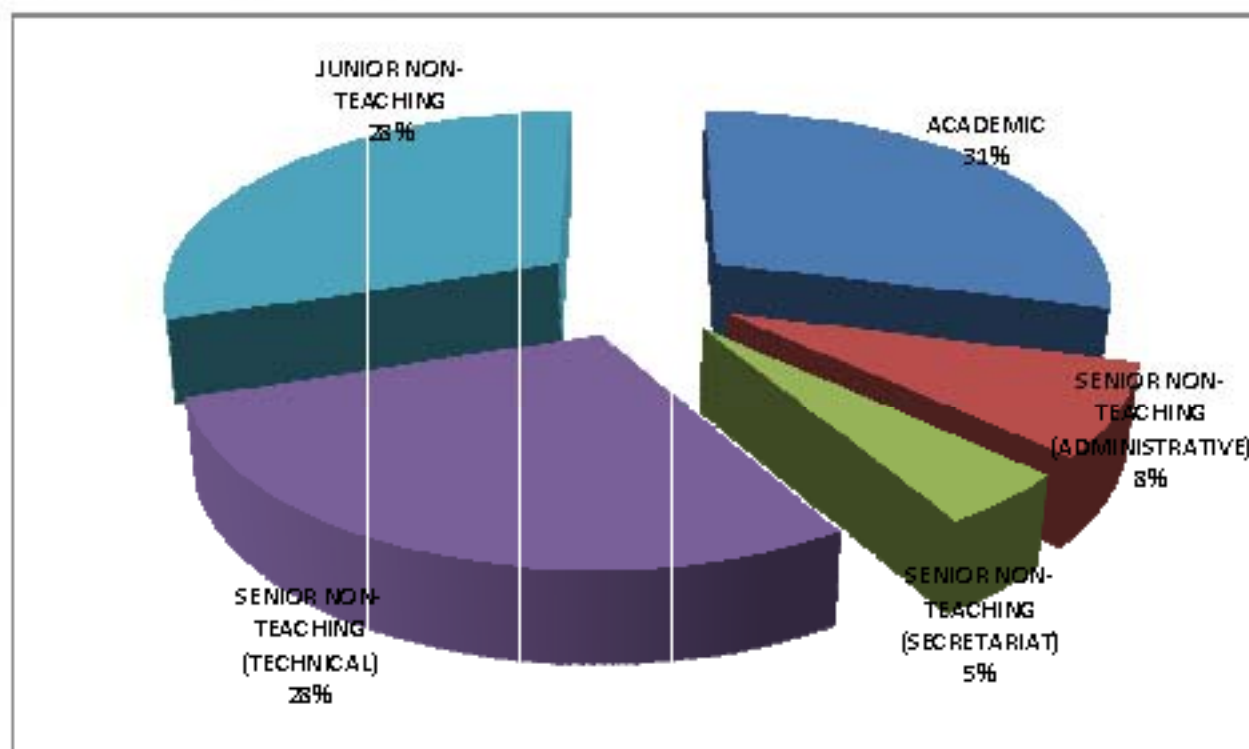


Table 32: Geographical Distribution of Staff as at December, 2011

STATE	ACADEMIC STAFF		SNR. NON TEACHING		JNR. NON-TEACHING		TOTAL		G/TOTAL	%
	M	F	M	F	M	F	M	F		
Abia	1	0	2	1	1	0	4	1	5	0.3
Adamawa	0	0	0	0	1	0	1	0	1	0.1
Akwa Ibom	3		7	2	6	1	16	3	19	1.0
Anambra	8	2	1	2	0	0	9	4	13	0.7
Bauchi	0	0	0	0	0	0	0	0	0	0
Bayelsa	0	1	1		0	0	1	1	2	0.1
Benue	2	0	2	1	13	0	17	1	18	1.0
Borno	1	0	0	0	0	0	1	0	1	0.1
Cross Rivers	0	0	2	0	1	0	3	0	3	0.2
Delta	3	4	9	10	5	1	17	15	32	1.7
Ebonyi	0	1	0	0	1	0	1	1	2	0.1
Edo	13	2	9	8	5	3	27	13	40	2.2
Ekiti	24	10	18	20	9	7	51	37	88	4.8
Emugu	1	0	3	2	1	1	5	3	8	0.4
Gombe	0	0	0	0	0	0	0	0	0	0
Imo	4	2	4	4	2	3	10	9	19	1.0
Jigawa	0	0	0	0	0	0	0	0	0	0.0
Kaduna	0	0	1	0	1		2	0	2	0.1
Kano	0	0	0	0	0	0	0	0	0	0
Katsina	0	0	0	0	1	0	1	0	1	0.05
Kebbi	0	0	0	0	0	0	0	0	0	0
Kogi	11	6	10	6	6	2	27	14	41	2.2
Kwara	18	4	9	9	2	3	29	16	45	2.4
Lagos	9	1	5	6	2	0	16	7	23	1.2
Nasarawa	0	0	1	0	0	0	1	0	1	0.1
Niger	0	0	2	0	0	0	2	0	2	0.1
Ogun	134	61	231	209	246	136	611	406	1017	55.0
Ondo	37	13	32	16	9	5	78	34	112	6.1
Osun	63	22	32	26	13	7	108	55	163	8.8
Oyo	84	14	38	18	16	9	138	41	179	9.7
Plateau	0	0	1	0	0	0	1	0	1	0.1
Rivers	1	0	2	0	0	0	3	0	3	0.2
Sokoto	0	0	0	0	3	0	3	0	3	0.2
Taraba	0	0	0	0	0	0	0	0	0	0
Yobe	0	0	0	0	0	0	0	0	0	0
Zamfara	0	0	0	0	0	0	0	0	0	0
FCT	0	0	0	0	0	0	0	0	0	0
Foreigners	3	2	0	0	0	0	3	2	5	0.3

Table 33: Names of Professors and Readers by December, 2011

NAMES	RANK	EMAIL ADDRESS & PHONE NO	AREA OF SPECIALISATION
COLLEGE OF AGRIC MANAGEMENT AND RURAL DEVELOPMENT			
P. A. Okuneye	Profes sor	bokuneye@yahoo.com +2348033233230	Farm Mgt & Account
Caroline A. Afolami	Profes sor	carolynafolami@yahoo.co.uk +2348033899539	Prod. Economics and Econometrics
Akin Omotayo	Profes sor	akinjuly@yahoo.co.uk +2348037223311	Agric Ext & Rural Soc.
S. Momoh	Profes sor	siakamomoh2000@yahoo.com +2348037215487	Cooperative & Farm Mgt
S. O. Apartaku	Profes sor	samapartaku@yahoo.com +2348038648563	Agric. Extension & Rural Dev.
Bolanle I. Akeredoh Ale	Profes sor	bolanlekassal@yahoo.com +2348038296518	Language and Communication
O. J. Ladebo	Profes sor	lolugbenga@yahoo.com +2348069821249	Agric. Ext. Mgt & org
A. O. Dipeolu	Profes sor	waledipe@gmail.com +2348033181553	Production Economics, Marketing & Consumer Economics
M.T. Ajayi	Profes sor	akinwumi5253@yahoo.com +2347030126840	Agric. Administration
J. O. Shopeju	Reader	josopeju9149@yahoo.com +2348037125917	Sociology & Criminology
E.O. Fakoya	Reader	fakoya2003@yahoo.com +2348034840333	Agric. Extension & Rural Sociology
D.A. Adegbite	Reader	darcasgbitenov58@yahoo.com +2348034229684	Agric Finance
COLLEGE OF ANIMAL SCIENCE AND LIVESTOCK PRODUCTION			
O. O. Balogun	Profes sor	femibalogun54@yahoo.com +2347034147636	Animal Biochemistry
O. A. Osinowo	Profes sor	xmays65@yahoo.com +2348033187110	Animal Science
Ayoka O. Adebambo	Profes sor	fbamb0412@yahoo.com +2348033374386	Animal Science
C. F. I. Onwuka	Profes sor	chysonka@yahoo.com +2348033376854	Ruminant Animal Nutrition
Daisy Eruvbetine	Profes sor	daisy@eruvbetine.com +2348033127433	Monogastric Animal Nutrition
S. S. Abiola	Profes sor	abiolass@yahoo.com +2347039401929	Monogastric Animal Production
A. B. J. Aira	Profes sor	airabji@yahoo.com +2347031084497	Ruminant Animal Production
A.M. Bangbose	Profes sor	bamamu@yahoo.com +2348033343234	Monogastric Animal Nutrition

NAMES	RANK	EMAIL ADDRESS & PHONE NO	AREA OF SPECIALISATION
C. O. N. Ikeobi	Profes sor	ikeobi@yahoo.co.uk +2348034718902	Animal Breeding
O. S. Onifade	Profes sor	onifadefemi@yahoo.com +2348037163500	Forage & Agronomy
O. O. Oduguwa	Profes sor	oduguwa2002@yahoo.com +2348033741112	Agric biochemistry & Animal Nutrition
M. O. Ozoje	Profes sor	micozoje@yahoo.com +2348037163501	Animal Science
O. Onagbesan	Profes sor	onagbesanok@yahoo.com +2348077766064	Animal Physiology
Alab a O. Jolaoso	Profes sor	ajolaosho@yahoo.com +2348033050551	Pas ture Agronomy
G.M. Babatunde	Profes sor	majitunde1@yahoo.com +2348034528693	Animal Production
O.M. Arigbede	Reader	arigbede2002@yahoo.com +2348033887173	Pas ture and Range
B.O. Oduguwa	Reader	oduguwa2002@yahoo.com +2348033741112	Animal Production
COLLEGE OF ENGINEERING			
P. O. Aiyedun	Profes sor	aiyedun_494@yahoo.com +2348023162184	Production Engineering
E. S. A. Ajisehin	Profes sor	ajisehin@yahoo.com +2348032407445	Agric. Engineering
S. B. Adejuyigbe	Profes sor	samueladejuyigbe@yahoo.com +2348034740386	Computer Aided Design
B.A. Adewunmi	Profes sor	babatunde_adewunmi@yahoo.com +2348033885382	Agric./Food Engineering
M.A. Waheed	Profes sor	akindoye@yahoo.com waheedma@unaab.edu.ng +2348061202421	Thermofluid and Energy Studies
T.W. Wara	Profes sor	docwarati@yahoo.com	Electrical/Electronic Engineering
O.T. Olateju	Profes sor	bayolateju@yahoo.co.uk +2348034754944	Cons truction/S tructure
L.G. Oyekan	Reader	gloyekan@yahoo.com +2348037140029	S tructural Engineering
M.A. Olayarju	Reader	tiyanju@yahoo.com +2347037595882	Agric. Engineering
COLLEGE OF ENVIRONMENT AL RESOURCE S MANAGEMENT			
J. A. Okojie	Profes sor		Fores t Mgt & Biometrics
O. Martins	Profes sor	olasumbo_martins@yahoo.co.uk +2348033338534	Hydrology Chemistry & Water Resources Mgt
S. A. Onadeko	Profes sor	onasadek@yahoo.com +2348037119510	Wildlife Ecology & Mgt/park Interpretation

NAMES	RANK	EMAIL ADDRESS & PHONE NO	AREA OF SPECIALISATION
N. J. Bello	Profes sor	njbello2003@yahoo.com +2348056352008	Climatology & Agro-meteorology
T. A. Arowolo	Profes sor	tarowolo@yahoo.com +2348037251777	Analytical & Environmental Chemistry
S. O. Otubusin	Profes sor	samotubusin@yahoo.com +2348034869816	Aquaculture & Fisheries Mgt
S. A. Ohwalana	Profes sor	samohwalana@yahoo.co.uk +2348037158068	Forest Economics and Management
A. M. Aduradola	Profes sor	amaduradola@yahoo.com +2348033307309	Silviculture & Agro-forestry
G. N. O. Ezeri	Profes sor	ezeri2000@yahoo.com +2348037240306	Fis h pathology
M. O. Adedire	Profes sor	depodire@yahoo.com +2348033377210	Silviculture & Agro-forestry
O. Bamgbose	Profes sor	kaybam2002@yahoo.com +2348033353507	Analytical Chemistry
Y. Akegbajo Samsons	Profes sor	samsons56@yahoo.co.uk +2348035021748	Aquaculture /Coastal Fisheries Mgt
I. T. Omorinyi	Reader	itomorinyi@yahoo.com +2348038093831	Fis heries Biology
W.O. Alegbeleye	Reader	segunalegbeleye@yahoo.com +2348033824292	Fis h Nutrition
C.O. Adeofun	Reader	Clemhu2000@yahoo.com +2348034042907	Environmental Remote Sensing
M.F. Adelanle	Reader	adekunlefm@yahoo.com +2348054460372	Forest Economics and Mgt.
A.M. Gbadebo	Reader		Geology
COLLEGE OF FOOD SCIENCE AND HUMAN ECOLOGY			
E. B. Oguntona	Profes sor	baahunde@yahoo.co.uk +2348034226421	Biochemistry & Nutrition
S. O. Awonorin	Profes sor	awonorin@yahoo.com +2348033951522	Food Processing Engineering
O. B. Oyewole	Profes sor	oyewoleb@yahoo.com +2348033351814	Food Microbiology
Clara R.B. Oguntona	Profes sor	claraoguntona@yahoo.co.uk +2348033785043	Nutrition & Dietetics
Sylvia V. A. Uzochukwu	Profes sor	suzochi@yahoo.com +2348033531178	Food Biotechnology
Folake O. Henshaw	Profes sor	hensofepc@yahoo.com +2348034056311	Food processing & preservation
L. O. Sanni	Profes sor	lateef_z@yahoo.com +2348033469882	Food Science & Tech.
O.O. Keshinro	Profes sor	remikesh2000@yahoo.com +2348037198206	Nutrition & Dietetics
D.A. Adenekan	Profes sor	dadel318@yahoo.com +2348037173042	Human Nutrition

NAMES	RANK	EMAIL ADDRESS & PHONE NO	AREA OF SPECIALISATION
M. A. Idowu	Reader	idowumchl@yahoo.com +2348039124327	Food Science & Tech.
Ibiyemi O. Olayiwola	Reader	ibisumbo@yahoo.com +2348037122280	Human Nutrition
G.O. Sokoya	Reader	sokoyago@yahoo.com	Home Science Mgt.
COLLEGE OF MANAGEMENT SCIENCES			
B.A. Oyelere	Professor	banjioyelere@yahoo.com +2348052816244	Account and Business Enterprise Management
B.B. Phillip	Reader	biolaphillip@gmail.com +2348033464346	Marketing and Gender Issues
A.O. Salami	Reader	akeemsalami20022002@yahoo.com +2348038458618	Business Enterprise Management
COLLEGE OF NATURAL SCIENCES			
F.O. Bamiro	Professor	fbamiro@yahoo.com +2348033379697	Analytical chemistry
M. Kadiri	Professor	profkadiri@yahoo.co.uk +2347037908688	Plant physiology
I. C. Eromosele	Professor	iceromosele@yahoo.com +2348033430064	Polymer chemistry
Cathrine O. Eromosele	Professor	yemisiero@yahoo.com +2348033376937	Industrial Chemistry
D. A. Agboola	Professor	+2348034073824	Plant physiology
M. S. Ayodele	Professor	segmuyi@yahoo.com +2348029879814	Plant Systematic reproductive biology & cytogenetics
O. E. Asinbo	Professor	asinbo@yahoo.com +2348033526707	Experimental Design
A. B. Idowu	Professor	tomowo2@gmail.com +2348053080184	Animal Physiology
Elizabeth A. Balogun	Professor	eabalogun@yahoo.com +2348033589068	Biochemical Toxicology
O. O. Odukoya	Professor	oodukoya@yahoo.com +2348066422538	Analytical Chemistry
Mobolaji O. Bankole	Professor	aadmokole@yahoo.co.uk +2348051587047	Food/Industrial microbiology/ Biotechnology
I. Akpan	Professor	iyakpan@yahoo.com +2348033374259	Food/Industrial microbiology/ Biotechnology
T. O. S. Popoola	Professor	topsiepop@yahoo.com +2348033280991	Applied microbiology
O. Adeniyiwa	Professor	adelad2@yahoo.com +2348033575238	Biochemical Toxicology

NAMES	RANK	EMAIL ADDRESS & PHONE NO	AREA OF SPECIALISATION
J. A. Olowofela	Professor	jaolowofela@yahoo.com +2348033232226	Solid Earth Physics
J. A. Oguntuase	Professor	oguntuase@yahoo.com +2348037218152	Theory of inequalities
F.A. Taiwo	Professor	takunbotaiwo@hotmail.com +2348061228986	Biophysical Chemistry
A.O. Mustapha	Reader	amu.dumustapha@gmail.com +2348069314602	Physics
A.A.A. Agboola	Reader	aaalazoo@yahoo.com +2348033816099	Theory of Fuzzy Sets
O. J. Adeniran	Reader	adeniranoj@unaab.edu.ng +2348033194406	Theory of loops
J.T. Bamgbose	Reader	Titibam2003@yahoo.com +2348033353508	Physical Chemistry
D.A. Ojo	Reader	daojo@yahoo.com +2348033928703	Medical & Public Health
O.R. Afolabi	Reader	afolabivvtr@yahoo.co.uk +2348061611796	Food & Ind. Microbiology
A.T. Akinwale	Reader	aatakinwale@yahoo.com +2348062867617	Knowledge Database System
O.D. Akinyemi	Reader	akinyemi@pythics.unaab.edu.ng +2348062937241	Solid Earth Physics

COLLEGE OF PLANT SCIENCE AND CROP PRODUCTION

M. T. Adetunji	Professor	omotade09@yahoo.com +2348033315104	Soil Chemistry
S. T. O. Lagoke	Professor	pasoni@yahoo.com +2348033371043	Agronomy & Weed Science
O. J. Anjo	Professor	anjojo@yahoo.com +2348033464163	Plant breeding
F. O. Olaniran	Professor	olaniran@yahoo.com +2348033903146	Cropping system /Oleiculture
I. O. O. Aiyelaagbe	Professor	ola_oh57@yahoo.com +2348033815606	Cropping System /Pomology
K. A. Okeleye	Professor	professorokeleye@yahoo.co.uk +2348034541894	Agronomy & Crop physiology
A. Y. A. Adeoti	Professor	yahayaadeoti@yahoo.com +2348032113797	Plant pathology/ Mycology
S. O. Afolami	Professor	steveafolami@yahoo.com +2348052407309	Nematology
P. O. Adetiloye	Professor	poadetiloye@yahoo.com +2348034073647	Plant Physiology
O. B. Kehinde	Professor	tundekehinde04@yahoo.com +2348035169778	Plant Breeding
F. K. Salako	Professor	kolawolesalako@hotmail.com +2348060810337	Soil physics & soil conservation

NAMES	RANK	EMAIL ADDRESS & PHONE NO	AREA OF SPECIALISATION
J. G. Bodunde	Professor	bodundegoke@yahoo.com +2348033479260	Environ Physiology/ Horticulture
M. O. Ajala	Professor	wole_mike@yahoo.com +2348033353942	Seed Technology
A. O. Enikuomelin	Professor	adeenikuomelin@yahoo.com +2348033359727	Plant pathology & Mycology
V.I.O. Olowe	Professor	oweb_aba@yahoo.com +2348033928111	Agromony/Crop Physiology
J.A. Adigun	Professor	jcsadig2007@yahoo.com +2348062451765	Agromony/Weed science
D. K. Ojo	Professor	dkojo58@yahoo.com +2348038123338	Plant Breeding
F.A. Sowemimo	Professor	shofa2002@yahoo.com +2348058420195	Genetics/Plant Breeders
K. A. Elemo	Reader	elemokehinde@hotmail.com +2348035526601	Agro/Cropping system
M. A. O. Okelana	Reader	maokelana@yahoo.com +2348034748869	Crop (Horticulture) Postharvest Physiology
Dupe Akintobi Adeyemo	Reader	dakintobia@yahoo.com +2348033479638	Seed Technology
M.O. Atayese	Reader	Atayese2000@yahoo.com +2348035683472	Plant Nutrition
I.O. Daniel	Reader	drdayodaniel@yahoo.co.uk +2347068948021	Seed Technology
J.J. Atungwu	Reader	jojerati@yahoo.com +2348037156261	Nematology
O.A. Babalola	Reader	Bimbola05@yahoo.com +2348066479206	Soil Microbiology
COLLEGE OF VETERINARY MEDICINE			
E. B. Otesile	Professor	tundeotesile@yahoo.co.uk +2348037230158	Food Animal Medicine
Morenike A. Dipeolu	Professor	ohlase@yahoo.com +2348033444258	Veterinary Public Health
O. B. Kasali	Professor	kasaliolajide@hotmail.com +2348067495438	Veterinary Pathology
H.O. Nottidge	Professor	helennotidge@yahoo.com +2348023254656	Small Animal Medicine
V.O. Sekoni	Professor	gbadeseconi@yahoo.com +2348065539717	Theriogenology
B.O. Fagbemi	Professor	jurlefagbemi@gmail.com	Vet. parasitology
M. A. Oyekanle	Reader	maoyekanle@yahoo.co.uk +2348060140512	Veterinary Microbiology
A.O. Talabi	Reader	deletalabi@yahoo.co.uk +2347034234936	Food Animal Medicine

SECTION 4

UNIVERSITY LIBRARY RESOURCES

Table 34: Use of Library Services from 2006/2007 to 2010/2011 Academic Sessions

YEAR	REGISTERED READERS				VOLUMES BORROWED AND CONSULTED			
	STAFF	STUDENTS	OTHERS	TOTAL	HOME READING	RESERVED COLLECTION	BOOKS AND JOURNALS	TOTAL
2006/2007	591	4,460	-	5,051	45,714	5,014	137,620	188,348
2007/2008	656	5,500	152	6,308	29,951	6,891	154,566	191,408
2008/2009	687	8,020	178	8,885	41,809	6,007	160,741	208,557
2009/2010	702	8,971	184	9,857	52,046	10,473	285,135	347,654
2010/2011	718	10,126	195	11,039	54,114	13,891	415,584	483,589

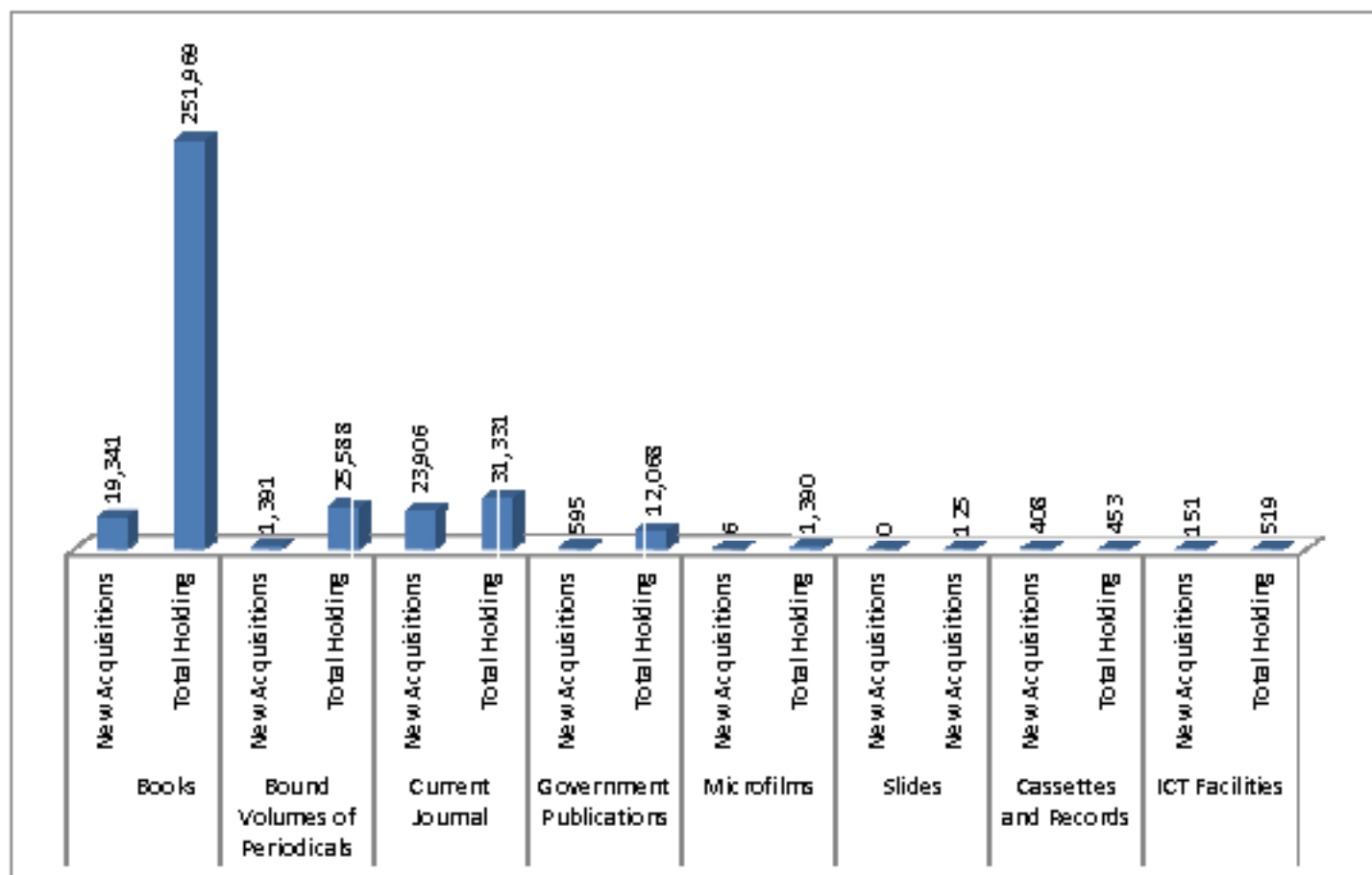
Table 35: Actual Library Resources from 2006/2007 to 2010/2011 Academic Sessions

RESOURCES		2006/2007	2007/2008	2008/2009	2009/2010	2010/2011	Total
Books	New Acquisitions	1,282	2,210	2,159	1,427	12,263	19,341
	Total Holding	44,307	46,517	48,676	50,103	62,366	251,969
Bound Volumes of Periodicals	New Acquisitions	346	384	336	184	141	1,391
	Total Holding	4,507	4,891	5,227	5,411	5,552	25,588
Current Journal	New Acquisitions	375*	375*	7,000*	7,000*	9,156*	23,906
	Total Holding	400*	400*	7,125*	7,125*	16,281*	31,331
Government Publications	New Acquisitions	104	207	142	97	45	595
	Total Holding	2,115	2,322	2,464	2,561	2,606	12,068
Microfilms	New Acquisitions	6	-	-	-	-	6
	Total Holding	278	278	278	278	278	1,390

RESOURCES		2006/2007	2007/2008	2008/2009	2009/2010	2010/2011	Total
Slides	New Acquisitions	-	-	-	-	-	0
	New Acquisitions	25	25	25	25	25	125
Cassettes and Records	New Acquisitions	2	2	3		401	408
	Total Holding	7	9	12	12	413	453
ICT Facilities	New Acquisitions	25	21	50	20	35	151
	Total Holding	42	63	113	133	168	519

*E-Journal inclusive

Figure 26: University Library Holdings as at December, 2011



SECTION 5

UNIVERSITY HEALTH STATISTICS

Table 36: Total Number of Patients Treated at the University Health Services by category from 2006/2007 to 2010/2011 Academic Sessions

Category	2006/2007	2007/2008	2008/2009	2009/2010	2010/2011
Students	3,383	4,186	5,938	10,247	10,301
Senior Staff	908	1,281	1,360	1,452	1,212
Senior Staff Dependants	697	1,021	945	1,111	1,289
Junior Staff	1,104	1,211	1,216	1,587	561
Junior Staff Dependants	1,162	1,337	1,327	1,708	1,822
Number Admitted to sick bay	233	276	389	541	489
NHIS Client				3,071	3,509
FUNIS				964	1,286
Non-staff members				149	63
Total	7,487	9,312	10,175	20,830	20,532

Figure 27: Patients Treated at the University Health Services in Percentages from 2006/2007 to 2010/2011 Academic Sessions

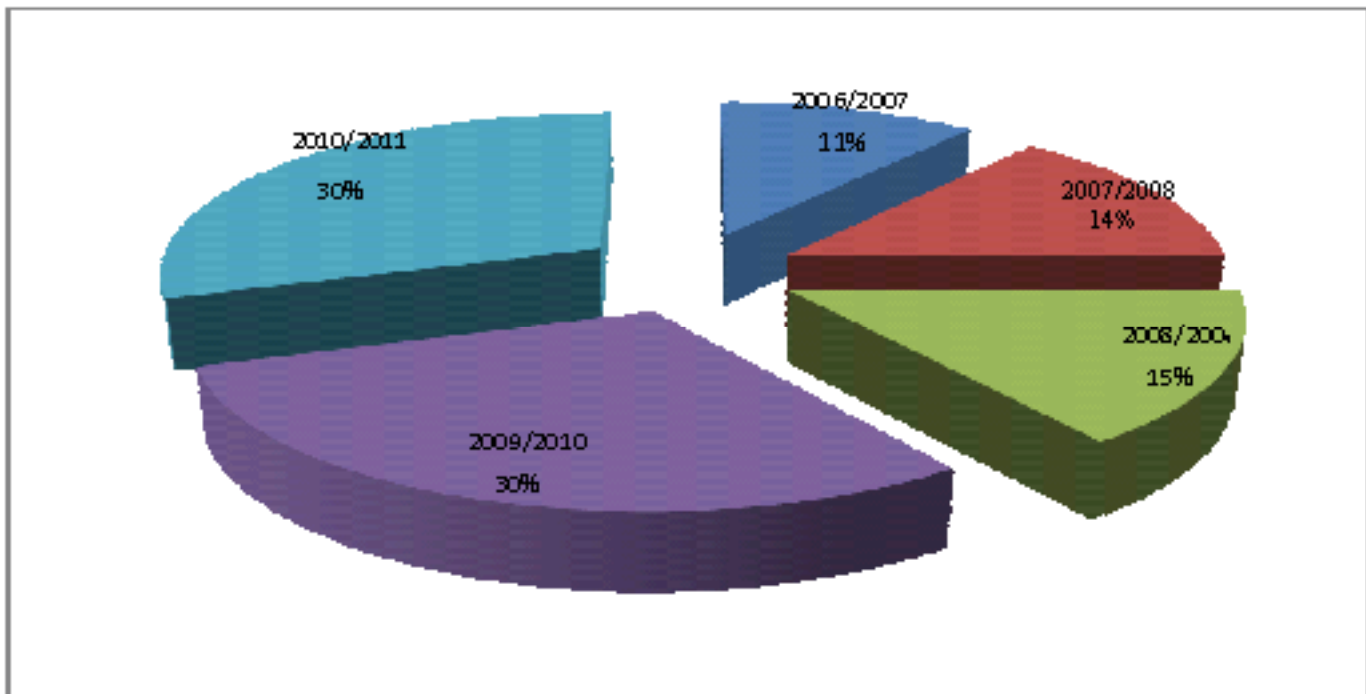


Figure 28: Patients Treated at the University Health Services by category in 2010/2011 Academic Session

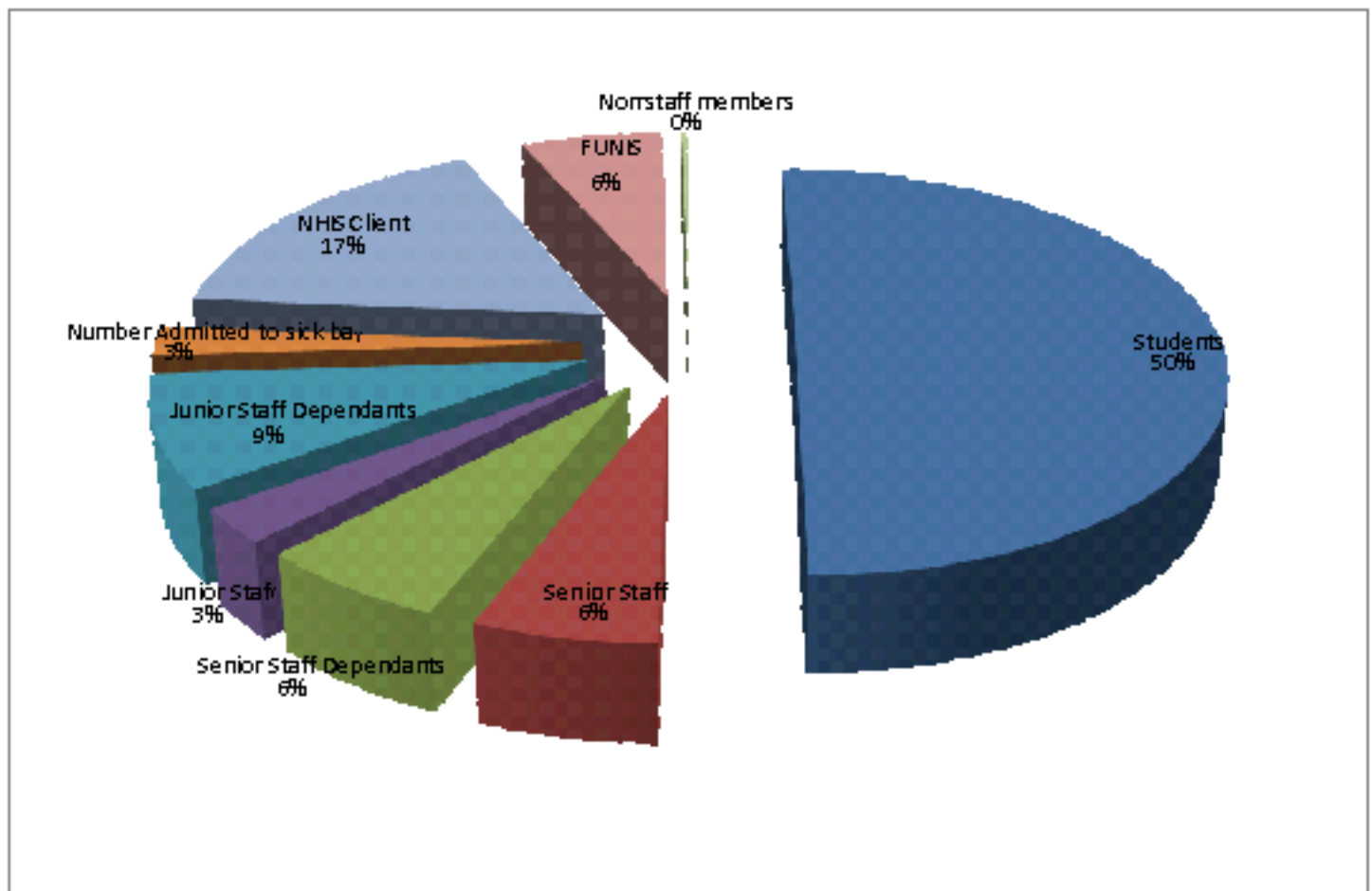


Table 37: Emergency Cases Treated at the University Health Services by Category from 2006/2007 to 2010/2011 Academic Sessions

Category	2006/2007	2007/2008	2008/2009	2009/2010	2010/2011
Students	118	128	231	377	284
Senior Staff	127	76	121	119	14
Senior Staff Dependants	22	17	19	12	24
Junior Staff	123	115	125	130	28
Junior Staff Dependants	82	70	77	94	32
Others	12	9	31	43	7
Total	484	415	586	765	389

Figure 29: Emergency Cases Treated at the University Health Services from 2006/2007 to 2010/2011 Academic Sessions

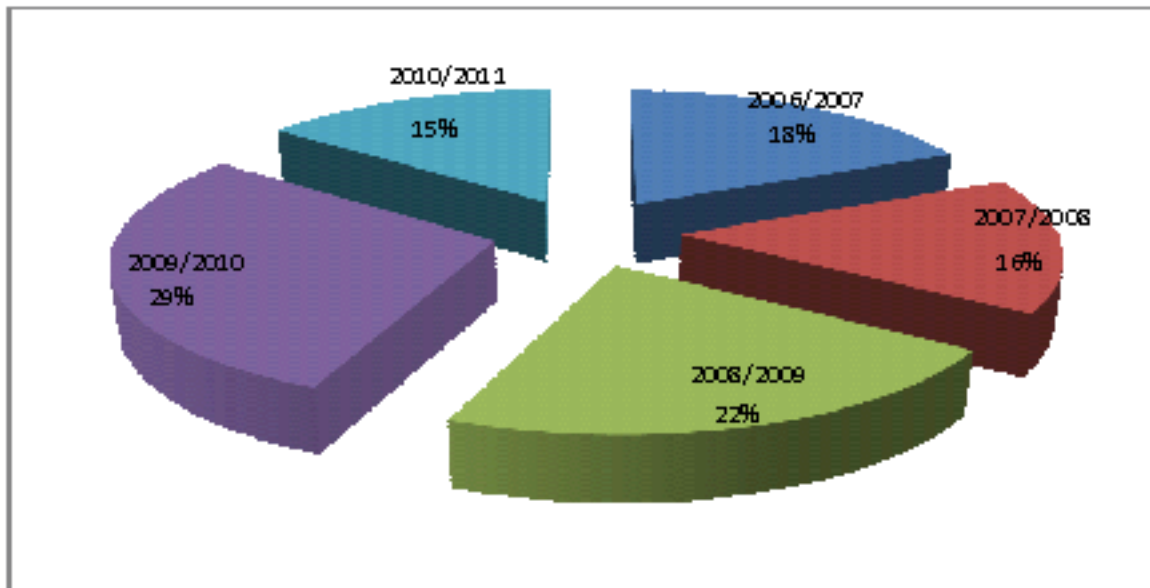


Table 38: Statistics of Immunization and Family Planning given at the University Health Services from 2006/2007 to 2010/2011 Academic Sessions

	2006/2007	2007/2008	2008/2009	2009/2010	2010/2011
Tetanus	166	174	192	208	349
Family Planning	3	1	5	2	49
TOTAL	169	175	197	210	398

Table 39: Laboratory Services at the University Health Services from 2006/2007 to 2010/2011 Academic Sessions

Category	2006/2007	2007/2008	2008/2009	2009/2010	2010/2011
Students	2,367	2,235	2,838	3,590	3,744
Senior Staff	112	166	97	262	350
Senior Staff Dependants	67	93	26	121	240
Junior Staff	217	233	104	302	203
Junior Staff Dependants	95	101	41	159	70
Total	2,858	2,828	3,106	4,353	4,607

SECTION 6
FINANCIAL STATISTICS

Table 40: Revenue/Expenditure of the University from 2004/2005 to 2010/2011

	INCOME SOURCE	2006/2007	2007/2008	2008/2009	2009/2010	2010/2011
		₦	₦	₦	₦	₦
1	Government Recurrent Subvention					
	a. Personnel Subvention	1,404,497,736	2,090,340,348	2,278,442,149	5,006,881,726	4,255,306,906
	b. Overhead Subvention	45,088,988	103,614,207	83,273,365	113,995,483	114,691,443
	c. Direct Teaching Lab. Cost Subvention	20,000,000	-	10,000,000	75,996,990	57,079,612
	d. Library Development Grant	-	-	8,500,000	10,050,000	6,800,000
	e. Others	52,000,000			103,576,250	92,413,346
2	Student Charges	89,595,782	242,320,691	327,004,394	705,206,046	682,944,013
3	Other Receipts	249,373,971	394,726,382	447,831,417	709,855,274	374,811,751
4	Profit on Disposal of Assets	-	1,087,570	415,000	2,846,245	3,530
	TOTAL INCOME	1,860,556,477	2,832,089,198	3,155,466,325	6,728,408,014	5,584,050,601
	RECURRENT EXPENDITURE/OPERATING EXPENSES					
1	Personnel Costs	1,373,064,259	1,703,736,384	1,810,831,732	4,826,915,251	4,170,200,768
2	Administrative Expenses & Others	448,133,037	671,758,992	869,252,038	1,522,646,134	1,248,885,899
	TOTAL RECURRENT EXPENDITURE	1,821,197,296	2,375,495,376	2,680,083,770	6,349,561,385	5,419,086,667
	SURPLUS/(DEFICIT)	39,359,181	456,593,822	475,382,555	378,846,629	164,963,934

SECTION 7

PHYSICAL FACILITIES

Figure 30: Number of FUNAAB Physical Projects from 2005 to 2011

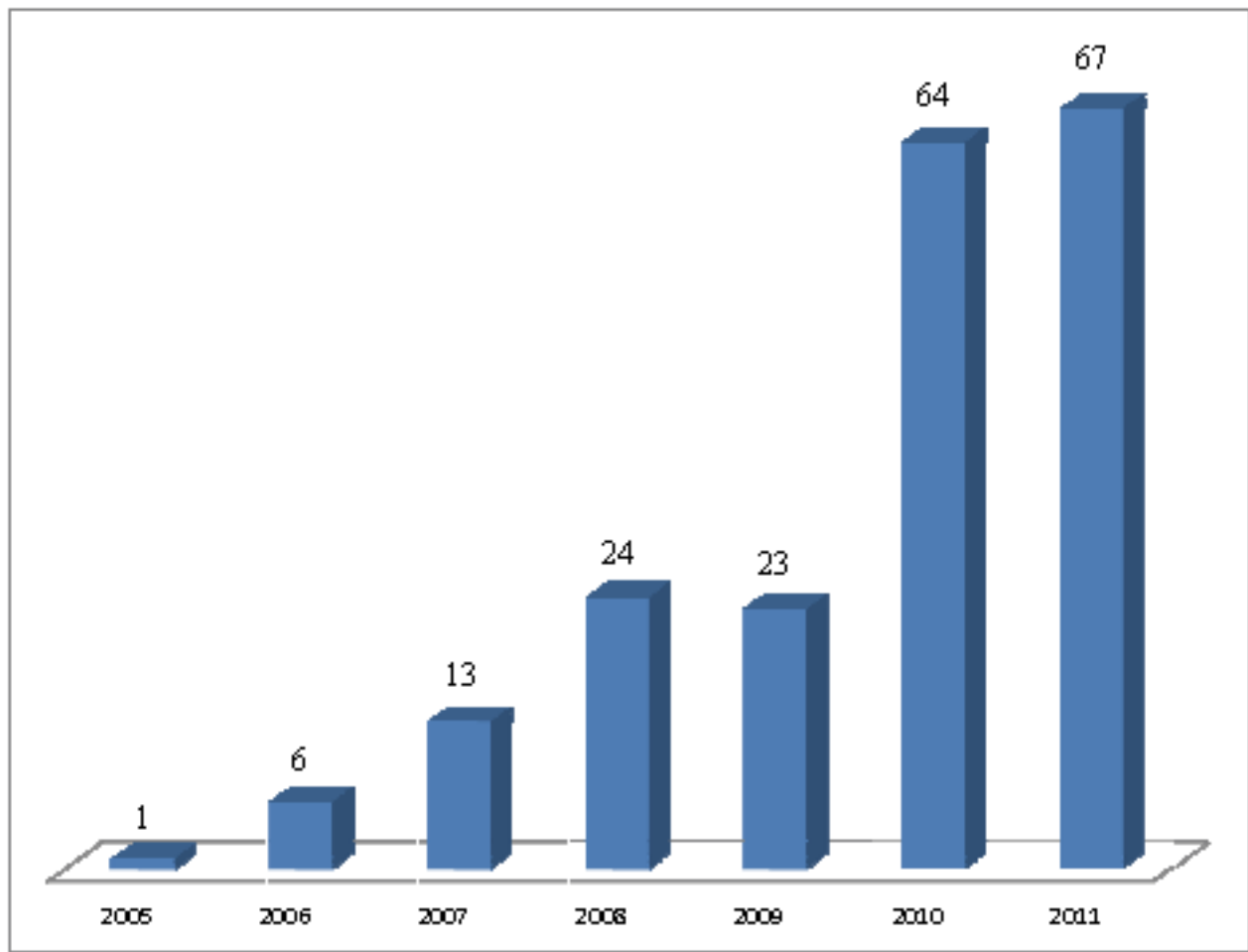


Table 41: List of Projects Executed from 2005 to 2010

S/N	PROJECT	YEAR OF AWARD	DATE OF COMPLETION	SOURCE OF FUND	REMARK
2005					
1	Supply of 1 No Ste yr Agric Tractor	2005	2005	2006 Capital Allocation	Completed and in use
2006					
1	Supply of 4 Nos Risograph Mac hines	2006	2006	2006 Capital Allocation	Completed and in use

S/N	PROJECT	YEAR OF AWARD	DATE OF COMPLETION	SOURCE OF FUND	REMARK
2	Construction fo Chief Tony Anerih Multipurpose Building	2006	2008	₦25m Donation from Chief Tony Anerih	Completed and in use
3	Construction of COLNAS Phase II	2006	2008	2006 Capital Allocation	Completed and in use
4	Construction of Chief Olatunde Abudu Building	2006	2007	₦16m Donation from Chief Olatunde Abudu	Completed and in use
5	Construction of Prototype Students Hostel	2006	2007	2006 Capital Allocation	Completed and in use
6	Construction of COLVET Phase II	2006	2008	2006 Capital Allocation	Completed and in use
2007					
1	Rehabilitation of Farm Facilities	2007	2008	2007 Capital Allocation	Completed and in use
2	Construction of COLENG electrical laboratory Phase II	2007	2008	2005/2006 ETF Intervention	Completed and in use
3	Construction of Female's Hostel	2007	2008	Extra Governmental Grant	Completed and in use
4	Conversion of Pro-Chancellor's lodge to Guest House	2007	2008	Extra Governmental Grant	Completed and in use
5	Construction of Prototype Lecture Theatre (JAO Hall)	2007	2008	Extra Governmental Grant	Completed and in use
6	Supply & Installation of Laboratory Equipment for AGROMET	2007	2007	2005/2006 ETF Intervention	Completed and in use
7	Supply & Installation of Laboratory Equipment for EMT	2007	2007	2005/2006 ETF Intervention	Completed and in use
8	Supply & Installation of Laboratory Equipment for COLVET	2007	2007	2005/2006 ETF Intervention	Completed and in use

S/N	PROJECT	YEAR OF AWARD	DATE OF COMPLETION	SOURCE OF FUND	REMARK
9	Supply & Installation of Laboratory Equipment for Agric. Engineering	2007	2007	2005/2006 ETF Intervention	Completed and in use
10	Supply & Installation of Laboratory Equipment for Civil Engineering	2007	2007	2005/2006 ETF Intervention	Completed and in use
11	Supply & Installation of Laboratory Equipment for Electrical Engineering	2007	2007	2005/2006 ETF Intervention	Completed and in use
12	Supply & Installation of Laboratory Equipment for Mechanical Engineering	2007	2007	2005/2006 ETF Intervention	Completed and in use
13	Supply & Installation of Laboratory Equipment for Animal Physiology	2007	2007	2005/2006 ETF Intervention	Completed and in use
2008					
1	Construction of COLENG Workshop	2008	2008	Extra Governmental Grant	Completed and in use
2	Construction of ICT Building	2008	2008	Donation from GTB	Completed and in use
3	Supply of Tractor/Implement	2008	2008	Donation from NUC	Completed and in use
4	Construction of COLVET (Phase III) Lecture Theatre	2008	2009	2007 Capital Allocation	Completed and in use
5	Construction of Comfort Station	2008	2009	Extra Governmental Grant	Completed and in use
6	Construction of Bukateria	2008	2009	Extra Governmental Grant	Completed and in use
7	Construction of Health Service Building (Phase II)	2008	2009	Extra Governmental Grant and other charges	Completed and in use
8	Construction of Farm Centre	2008	2009	2008 Capital Allocation	Completed and in use
9	Construction of Plantation Village	2008	2009	2008 Capital Allocation	Completed and in use

SN	PROJECT	YEAR OF AWARD	DATE OF COMPLETION	SOURCE OF FUND	REMARK
10	Procurement of Equipment and Establishment of Cash Crop Plantation	2008	2009	2008 Capital Allocation	Completed and in use
11	Construction of Sports Complex Phase I	2008	2009	2008 Capital Allocation	Completed and in use
12	Construction of New Male Hostel	2008	2009	2008 Capital Allocation	Completed and in use
13	Construction of Female Hostel	2008	2009	2008 Capital Allocation	Completed and in use
14	Construction of COLENG Lecture Theatre	2008	2009	2008 Capital Allocation	Completed and in use
15	Construction of Biotechnology and Central Laboratory Building	2008	2009	2007 ETF Intervention	Completed and in use
16	Construction of Pension House	2008	2009	Extra Governmental Grant and other charges	Completed and in use
17	Construction of Basket Ball Court	2008	2009	2005/2006 ETF Intervention	Completed and in use
18	Construction of 1,000-Seater Lecture Hall	2008	2009	Extra Governmental Grant and other charges	Completed and in use
19	Construction of UNIS Boys' Hostel	2008	2009	Extra Governmental Grant and other charges	Completed and in use
20	Construction of UNIS Girls' Hostel	2008	2009	Extra Governmental Grant and other charges	Completed and in use
21	Construction of 2 nos 2-bedrooms for UNIS House masters	2008	2009	Extra Governmental Grant and other charges	Completed and in use

S/N	PROJECT	YEAR OF AWARD	DATE OF COMPLETION	SOURCE OF FUND	REMARK
22	Construction of Common Room and Laundry for UNIS	2008	2009	Extra Governmental Grant and other charges	Completed and in use
23	Construction of Public Relations and Internal Audit Building	2008	2009	Extra Governmental Grant and other charges	Completed and in use
24	Supply and Installation of Teaching and Research Equipment				
	a. Supply and Installation of Academic/Education Solution	2008	2008	2008 Capital Allocation	Completed and in use
	b. Supply and Installation of Account/Online registration	2008	2008	2008 Capital Allocation	Completed and in use
	c. Supply and Installation of VSAT Solution via internet Access	2008	2008	2008 Capital Allocation	Completed and in use
	d. Rehabilitation of Serviceable Teaching and Research Equipment	2008	2008	2008 Capital Allocation	Completed and in use
	e. Supply and Installation of Computer and Allied Products	2008	2008	2008 Capital Allocation	Completed and in use
2009					
1	Aluminum Partitioning of the Adedipe Library	2009	2009	Extra Governmental Grant and other charges	Completed and in use
2	Construction of Civil Engineering Building	2009	2010	2009 Capital Allocation	Completed and in use
3	Supply of Teaching and Research Equipment				
	a. Supply and Installation of Teaching and Research Equipment	2009	2009	2009 Capital Allocation	Completed and in use
	b. Supply and Installation of Teaching and Research Equipment	2009	2009	2009 Capital Allocation	Completed and in use

S/N	PROJECT	YEAR OF AWARD	DATE OF COMPLETION	SOURCE OF FUND	REMARK
	c. Supply and Installation of Teaching and Research Equipment	2009	2009	2009 Capital Allocation	Completed and in use
	d. Supply and Installation of Teaching and Research Equipment	2009	2009	2009 Capital Allocation	Completed and in use
	e. Supply and Installation of 200KVA Perkins Sound Proof Generator	2009	2009	2009 Capital Allocation	Completed and in use
4	Supply and Installation of Classroom Furniture (COLENG Lecture Theatre)	2009	2009	Extra Governmental Grant and other charges	Completed and in use
5	Supply and Installation of Classroom Furniture (COLENG Lecture Theatre)	2009	2009	Extra Governmental Grant and other charges	Completed and in use
6	Supply and Installation of Lecture Theatre seats (1,000-Seater)	2009	2009	Extra Governmental Grant and other charges	Completed and in use
7	Electrification of CENHURD Village (Low Tension Network)	2009	2009	Extra Governmental Grant and other charges	Completed and in use
8	Electrification of CENHURD Village (High Tension Network)	2009	2009	Extra Governmental Grant and other charges	Completed and in use
9	Land clearing and Construction of Earth Road in CENHURD Village	2009	2009	Extra Governmental Grant and other charges	Completed and in use
10	Construction of Administration Building in CENHURD	2009	2010	Extra Governmental Grant and other charges	Completed and in use
11	Construction of Library in CENHURD	2009	2010	Extra Governmental Grant and other charges	Completed and in use

S/N	PROJECT	YEAR OF AWARD	DATE OF COMPLETION	SOURCE OF FUND	REMARK
12	Construction of Programme Office in CENHURD	2009	2010	Extra Governmental Grant and other charges	Completed and in use
13	Construction of Lecture Theatre I in CENHURD	2009	2010	Extra Governmental Grant and other charges	Completed and in use
14	Construction of Lecture Theatre II in CENHURD	2009	2010	Extra Governmental Grant and other charges	Completed and in use
15	Construction of Classroom/Laboratory Block A and B in CENHURD	2009	2010	Extra Governmental Grant and other charges	Completed and in use
16	Construction of Administrative Building (Unity Building)	2009	2010	Extra Governmental Grant and other charges	Completed and in use
17	Construction of Sports Complex Phase II				
	a. Completion of Lawn Tennis Courts	2009	2010	2009 Capital Allocation	Completed and in use
	b. Completion of Volley Ball Courts	2009	2010	2009 Capital Allocation	Completed and in use
	f. Purchase of Sporting Equipment and Materials	2009	2010	2009 Capital Allocation	Completed and in use
18	Fencing of Iyalode Tinubu Female Students' Hostel	2009	2010	Extra Government Earnings and other charges	Completed and In use
19	Drainage Network and Interlocking Paved Walkway for Julius Okojie Lecture Theatre Complex	2009	2010	Extra Government Earnings and other charges	Completed and In use
20	Supply and Installation of 200KVA Perkins Sound Proof Generators	2009	2010	Extra Government Earnings and other charges	Supplied and In use

S/N	PROJECT	YEAR OF AWARD	DATE OF COMPLETION	SOURCE OF FUND	REMARK
21	Supply and Installation of 2 No. 100KVA Perkins Sound Proof Generators	2009	2010	Extra Government Earnings and other charges	Supplied and In use
22	Construction of Biotechnology Centre and Central Laboratory Building (Block B)	2009	2010	2008 ETF Intervention	Completed and In use
23	Construction of Post Graduate School	2009	2011	Extra Government Earnings and Other Charges	Completed and In use
2010					
1	Construction of College of Food Science and Human Ecology Building (COLFHEC)	2010	2011	FGN CAPITAL 2010	Completed and In use
2	Construction of College of Environmental Resources Management (COLERM) Building (Phase II)	2010	2011	FGN CAPITAL 2010	Completed and In use
3	Construction of Comfort Station A	2010	2010	Extra Government Earnings and other charges	Completed and In use
4	Construction of Comfort Station B	2010	2010	Extra Government Earnings and other charges	Completed and In use
5	Construction of 2500 Seater Auditorium	2010		FGN CAPITAL 2010	Completed and In use
6	Erosion Control Works at Sport Complex	2010	2011	FGN CAPITAL 2010	Completed and In use
7	Construction of Administrative Building for International Scholars & Exchange Programme Centre	2010		FGN CAPITAL 2010	Ongoing
8	Construction of Academic Building for International Scholars & Exchange Programme Centre	2010	2011	FGN CAPITAL 2010	Completed and In use

S/N	PROJECT	YEAR OF AWARD	DATE OF COMPLETION	SOURCE OF FUND	REMARK
9	Construction of Library/ICT & Museum for International Scholars & Exchange Programme Centre	2010	2011	FGN CAPITAL 1 2010	Completed and In use
10	Construction of Guest House for International Scholars & Exchange Programme Centre	2010	2011	FGN CAPITAL 2010	Completed and In use
11	Construction of Administrative Building for Farm Centre	2010	2011	FGN CAPITAL 2010	Completed and In use
12	Construction of Farm Centre Restaurant Building	2010	2011	FGN CAPITAL 2010	Completed and In use
13	Construction of Lecture Rooms for Farm Centre	2010	2011	FGN CAPITAL 2010	Completed and In use
14	Construction of Agro-Market for Farm Centre	2010	2011	FGN CAPITAL 2010	Completed and In use
15	Construction of Crop Labour Line Accommodation for Farm Centre	2010	2011	FGN CAPITAL 2010	Completed and In use
16	Construction of Senior Staff Accommodation Building for Farm	2010	2011	FGN CAPITAL 2010	Completed and In use
17	Construction of Poultry Building for Farm Centre	2010	2011	FGN CAPITAL 2010	Completed and In use
18	Construction of Ruminant Building and (Sheep and Goat) for Farm Centre	2010	2011	FGN CAPITAL 2010	Completed and In use
19	Construction of Ruminant Building (Cattle) For Farm Centre	2010	2011	FGN CAPITAL 2010	Completed and In use
20	Construction of One (1) Block of Classrooms for UNIS	2010	2010	Extra Government Earnings and other charges	Completed and In use
21	Rehabilitation of Home Science Practicum Building	2010	2010	Extra Government Earnings and other charges	Completed and In use
22	Construction of 2000 Capacity Auditorium	2010		ETF 2009/2010	Ongoing

S/N	PROJECT	YEAR OF AWARD	DATE OF COMPLETION	SOURCE OF FUND	REMARK
23	Covered Link way for the Unity Buildings	2010	2010	Extra Government Earnings and other charges	Completed and In use
24	Supply & Installation of Office Furniture and Curtains (INHURD)	2010	2010	Extra Government Earnings and Other Charges	Completed and In use
25	Supply & Installation of Office Furniture and Curtains (INHURD)	2010	2010	Extra Government Earnings and Other Charges	Completed and In use
26	Supply & Installation of Classroom Furniture & Lecture Theatre Seats for INHURD	2010	2010	Extra Government Earnings and Other Charges	Completed and In use
27	Supply & Installation of Classroom Furniture & Lecture Theatre Seats for INHURD	2010	2010	Extra Government Earnings and Other	Completed and In use
28	Supply & Installation of 500KVA Transformer & Extension of 11/0.45kva TO Service Abudu, Pension, PR & Audit Building	2010	2010	Extra Government Earnings and Other Charges	Completed and In use
29	Supply & Installation of 500KVA Transformer & Extension of 11/0.45 KVA to Service College of Engineering	2010	2010	Extra Government Earnings and Other Charges	Completed and In use
30	Installation of CCTV for JAO 13 & MPB 14	2010	2010	Extra Government Earnings and Other charges	Supplied, Installed and in-use
31	Construction of Livestock Processing Building Complex	2010	2011	ETF/2009/2010	Completed and In use
32	Construction of Concrete of Concrete Culverts LOTA	2010		Extra Government Earnings and Other Charges	Ongoing

S/N	PROJECT	YEAR OF AWARD	DATE OF COMPLETION	SOURCE OF FUND	REMARK
33	Construction of Concrete Culverts LOTB	2010		Extra Government Earnings and Other Charges	Ongoing
34	Construction of Concrete Culverts LOTC	2010		Extra Government Earnings and Other Charges	Ongoing
35	Construction of Student Hostel Block A	2010		FGN Capital 2010	Ongoing
36	Construction of Student Hostel Block B	2010		FGN Capital 2010	Ongoing
37	Construction of Prototype Female Hostel	2010	2011	Donation by RT Hon. Dimeji Bankole	Completed and In use
38	Construction of Prototype Male Hostel	2010	2011	Donation by RT Hon. Dimeji Bankole	Completed and In use
39	Construction of Administrative building B (Unity Building)	2010	2011	Donation by RT Hon. Dimeji Bankole	Completed and In use
40	Re-grassing of the Football Pitch	2010	2011	Extra Government Earnings and Other Charges	Completed and In use
41	Flowering and Grass Planting from The Oba Lipede to ICT Resource Centre	2010	2011	Extra Government Earnings and Other Charges	Completed and In use
42	Construction of Institute of Food Security, Environmental Resources & Agricultural Research Building (IFS ERAR)	2010		ETF 2009/2010	Ongoing
43	Supply and Installation of 500KVA Transformer to the Sports Centre/2500 Capacity Auditorium	2010	2010	Extra Government Earnings and Other Charges	Completed and In use
44	Supply and Installation of 415 V Service Line and Underground cables to the Sports Centre/2500 Capacity Auditorium	2010	2010	Extra Government Earnings and Other Charges	Completed and In use

S/N	PROJECT	YEAR OF AWARD	DATE OF COMPLETION	SOURCE OF FUND	REMARK
45	Construction of Erosion and Flood Control at The Female Halls of Residence area, COLNAS and Chief Tony Anenih Multipurpose Buildings	2010	2011	FGN Capital 2010	Completed and In use
46	Construction of Interlocking Paved Walkways (Zone C)	2010	2011	FGN Capital 2010	Completed and In use
47	Construction of Interlocking Paved Walkways (Zone B)	2010	2011	FGN Capital 2010	Completed and In use
48	Completion of Bukateria for Junior and Senior Staff	2010	2011	Extra Government Earnings and Other Charges	Completed and In use
49	Construction of Fence, Gate, Entrance Gate and Adjoining Facilities at INHURD	2010	2011	Extra Government Earnings and Other Charges	Completed and In use
50	Construction of Student Hostel at INHURD (Block A)	2010	2011	Extra Government Earnings and Other Charges	Completed and In use
51	Extension of the Vice-Chancellor's Office	2010	2011	Extra Government Earnings and Other Charges	Completed and In use
52	Erosion Control Works at the International Scholars and Exchange Centre	2010	2011	FGN Capital 2010	Completed and In use
53	Construction of Zoological Garden	2010		ETF 2010 (Special)	Ongoing
54	Construction of 500 Seater Central Computer Laboratory Building, 500 PC Hardware and related items	2010		ETF 2010 (Special)	Ongoing
55	Construction of Veterinary Teaching and Research Farm Facilities	2010	2011	FGN CAPITAL 2010	Completed and In use
56	Construction of Sports Complex (Phase 3) Grand Stand	2010	2011	FGN CAPITAL 2010	Completed and In use

S/N	PROJECT	YEAR OF AWARD	DATE OF COMPLETION	SOURCE OF FUND	REMARK
57	Supply and Extension of High Tension Lines to IFSERAR	2010	2010	Extra Government Earnings and Others Charges	Completed and In use
58	Supply and Installation of 30KVA inverter (2 Units)	2010	2010	Extra Government Earnings and Others Charges	Completed and In use
59	Supply and Installation of APC Smart UPS : 30KVA for ICT Resource Centre	2010	2010	Extra Government Earnings and Others Charges	Completed and In use
60	Supply Tools and Consumables for ICT	2010	2010	Extra Government Earnings and Others Charges	Completed and In use
61	Supply and Installation of 60KVA Claude Lyons Stabilizer for ICT Resource Centre	2010	2010	Extra Government Earnings and Others Charges	Completed and In use
62	Supply and Installation of Laboratory Furniture for the Institute for Human Resources Development (INHURD)	2010	2010	Extra Government Earnings and Others Charges	Supplied, Installed and In use
63	Procurement of Steel Library Shelves for the Institute for Human Resources Development (INHURD)	2010	2010	Extra Government Earnings and Others Charges	Supplied, Installed and In use
64	Reconstruction of Ceremonial Road	2010	2011	FGN CAPITAL 2010	Completed and In use
2011					
1	Construction of Student Hostel at INHURD (BLOCK B)	2011	2011	Extra Government Earnings and Other Charges	Completed and In use
2	Construction of Student Hostel Block C	2011	-	Extra Government Earnings and Other Charges	Ongoing

S/N	PROJECT	YEAR OF AWARD	DATE OF COMPLETION	SOURCE OF FUND	REMARK
3	Construction of Student Hostel Block D	2011	-	Donation From Zenith Bank	Ongoing
4	Construction of Chancellors Lodge	2011	-	Extra Government Earnings and Other Charges	Ongoing
5	Construction of Pro-Chancellors Lodge	2011	-	Extra Government Earnings and Other Charges	Ongoing
6	Construction of Vice Chancellors lodge	2011	-	Extra Government Earnings and Other Charges	Ongoing
7	Construction of IFSERAR Farm office & Security House	2011	2011	Extra Government Earnings and Other Charges	Completed and In use
8	Construction of Access Box Culverts (2 nd Gate to Bakery along Farm Centre road)	2011	2011	Extra Government Earnings and Other Charges	Completed and In use
9	Construction of UNIS Hostel Phase II (COMMON ROOM)	2011	2011	Extra Government Earnings and Other Charges	Completed and In use
10	Construction of UNIS Hostel Phase II (LAUNDRY)	2011	2011	Extra Government Earnings and Other Charges	Completed and In use
11	Construction of UNIS Hostel Phase II (GIRLS HOSTEL- BLOCK C)	2011	2011	Extra Government Earnings and Other Charges	Completed and In use

S/N	PROJECT	YEAR OF AWARD	DATE OF COMPLETION	SOURCE OF FUND	REMARK
12	Construction of UNIS Hostel Phase II (BOYS HOSTEL- BLOCK H)	2011	2011	Extra Government Earnings and Other Charges	Completed and In use
13	Construction of Staff Nursery and Primary School	2011	-	Extra Government Earnings and Other Charges	Ongoing
14	Construction of Earth Roads Network for Farm centre	2011	-	FGN 2011 Capital Grant	Ongoing
15	Construction of Interlocking Paved car Park, and Drive way at International Scholars and Resource Centre	2011	-	Extra Government Earnings and Other Charges	Ongoing
16	Construction of Central Car Park (Interlocking Paving) at PG School, COLFHEC, COLERM Phase II, 2000 Lecture Theatre, and Central Computer Laboratory.	2011	-	Extra Government Earnings and Other Charges	Ongoing
17	Construction of Car Park for Unity Building	2011	2011	Extra Government Earnings and Other Charges	Completed and In use
18	Construction of Crop Labour Line Accommodation Building for the Farm Centre Phase II	2011	2011	Extra Government Earnings and Other Charges	Completed and In use

SN	PROJECT	YEAR OF AWARD	DATE OF COMPLETION	SOURCE OF FUND	REMARK
19	Construction of Agro-Market for the Farm Centre Phase II	2011	2011	Extra Government Earnings and Other Charges	Completed and In use
20	Construction of Box Concrete Culverts along Plantation Village Road	2011	2011	Extra Government Earnings and Other Charges	Ongoing
21	Construction of Gate Houses for Vice Chancellor's, Pro-Chancellor's and Chancellor's Lodges	2011	-	Extra Government Earnings and Other Charges	Ongoing
22	Completion of Sports Complex Site Office	2011	2011	Extra Government Earnings and Other Charges	Completed and In use
23	Construction of Gate House for International Scholars and Resource Centre	2011	-	Extra Government Earnings and Other Charges	Ongoing
24	Supply and Installation of Lecture Theatre Seats for Post Graduate School	2011	-	Extra Government Earnings and Other Charges	Ongoing
25	Extension of 11 KV Line, Installation of New 500 KVA, 11/0.415 KV Distribution Transformer and 415 Distribution Network to service ISEC	2011	-	Extra Government Earnings and Other Charges	Ongoing

SN	PROJECT	YEAR OF AWARD	DATE OF COMPLETION	SOURCE OF FUND	REMARK
26	Extension of 415V Distribution Network to Service The Proposed UNAAB Staff School	2011	-	Extra Government Earnings and Other Charges	Ongoing
27	External Electrification of New 500 KVA (11/0.415KV Distribution Substation & Line) to Service Zoological Garden	2011	-	Extra Government Earnings and Other Charges	Ongoing
28	Re- construction of University Ring Road	2011	2011	FGN CAPITAL 2011	Completed and In use
29	Construction of Road from Post Graduate School Junction to Farm Centre	2011	2011	FGN CAPITAL 2011	Completed and In use
30	Construction of Road from Isolu Second Gate to the Junction of Farm Centre Road	2011	2011	FGN CAPITAL 2011	Completed and In use
31	Fencing of International Scholars and Resource Centre LOT I	2011		Extra Government Earnings and Other Charges	Ongoing
32	Fencing of International Scholars and Resource Centre LOT II	2011		Extra Government Earnings and Other Charges	Ongoing
33	Fencing of International Scholars and Resource Centre LOT III	2011	-	Extra Government Earnings and Other Charges	Ongoing

S/N	PROJECT	YEAR OF AWARD	DATE OF COMPLETION	SOURCE OF FUND	REMARK
34	Completion of COLVET Phase II Building	2011	-	Extra Government Earnings and Other Charges	Ongoing
35	Fencing of The Vice-Chancellors Lodge	2011	-	Extra Government Earnings and Other Charges	Ongoing
36	Fencing of The Pro-Chancellors Lodge	2011	-	Extra Government Earnings and Other Charges	Ongoing
37	Fencing of The Chancellors Lodge	2011	-	Extra Government Earnings and Other Charges	Ongoing
38	Extension of 11 KV Line, Installation of New 500 KVA, 11/0.415 KV Distribution Transformer and 415 Distribution Network to service the Vice Chancellor's, Pro-Chancellor's and Chancellor's Lodges	2011	2011	FGN CAPITAL 2011	Completed and In use
39	Fencing of the New Female Students' Hostel	2011	-	Extra Government Earnings and Other Charges	Ongoing
40	Construction of the Road from Health Centre to Vice Chancellor's, Pro-Chancellor's and Chancellor's Lodges and International Scholars and Resource Centre.	2011	-	FGN CAPITAL 2011	Ongoing

S/N	PROJECT	YEAR OF AWARD	DATE OF COMPLETION	SOURCE OF FUND	REMARK
41	Construction of the Road from FUNAAB International School Junction to the Staff Nursery and Primary School	2011	-	FGN CAPITAL 2011	Ongoing
42	Construction of the Veterinary Teaching Hospital Complex	2011	-	FGN CAPITAL 2011	Ongoing
43	Construction of the Interlocking Paved Car Park at the New Female Hostel	2011	-	Extra Government Earnings and Other Charges	Ongoing
44	Construction of the Interlocking Paved Walkways and paving at the New Female Hostel	2011	-	Extra Government Earnings and Other Charges	Ongoing
45	Construction of 3000 Capacity Poultry Building at the Farm Centre	2011	-	FGN CAPITAL 2011	Ongoing
46	Construction of Ancillary Building (LOT 2) at the International Scholars and Resource Centre.	2011	-	Extra Government Earnings and Other Charges	Ongoing
47	Construction of Swimming Pool (LOT 1) at the International Scholars and Resource Centre	2011	-	Extra Government Earnings and Other Charges	Ongoing
48	Construction of Interlocking Paved Walkways at the Post Graduate School, College of Food Science and Human Ecology (COLFHEC) and Biotechnology Centre	2011	-	Extra Government Earnings and Other Charges	Ongoing

S/N	PROJECT	YEAR OF AWARD	DATE OF COMPLETION	SOURCE OF FUND	REMARK
49	Construction of Interlocking Paved Walkways at the College of Environmental Resources Management (COLERM) Phase I, 2000 Capacity Lecture Theatre and Computer Laboratory.	2011	-	Extra Government Earnings and Other Charges	Ongoing
50	Construction of 1 No. Horseley Bridge Pressed Steel Elevated Water Tank for the Vice-Chancellor's, Pro-Chancellor's and Chancellor's Lodges	2011	-	Extra Government Earnings and Other Charges	Ongoing
51	Landscaping of the Vice-Chancellor's Lodges, Pro-Chancellor's and the International Scholars and Resource Centre	2011	-	Extra Government Earnings and Other Charges	Ongoing
52	Completion of Box and Pipe Culverts on 12KM Lateite Road From University Bus-Stop Via Farm Centre to INHURD (LOT A)	2011	-	Extra Government Earnings and Other Charges	Ongoing
53	Completion of Box and Pipe Culverts on 12KM Lateite Road From University Bus-Stop Via Farm Centre to INHURD (LOT B)	2011	-	Extra Government Earnings and Other Charges	Ongoing
54	Completion of Box and Pipe Culverts on 12KM Lateite Road From University Bus-Stop Via Farm Centre to INHURD (LOT C)	2011	-	Extra Government Earnings and Other Charges	Ongoing

S/N	PROJECT	YEAR OF AWARD	DATE OF COMPLETION	SOURCE OF FUND	REMARK
55	Completion of Administrative Building at International Scholars and Resource Centre (Lot 1 : Outstanding Civil Works)	2011	-	Extra Government Earnings and Other Charges	Ongoing
56	Completion of Administrative Building at International Scholars and Resource Centre (Lot 2 : Roof)	2011	-	Extra Government Earnings and Other Charges	Ongoing
57	Completion of Administrative Building at International Scholars and Resource Centre (Lot 3 : Mechanical and Electrical Installations)	2011	-	Extra Government Earnings and Other Charges	Ongoing
58	Completion of Administrative Building at International Scholars and Resource Centre (Lot 4: Finishings)	2011	-	Extra Government Earnings and Other Charges	Ongoing
59	Construction of Kitchen Cabinets in the Chancellor's Lodge (Main Building, Charlet and Boys Quarters)	2011	-	Extra Government Earnings and Other Charges	Ongoing
60	Construction of Kitchen Cabinet in the Pro-Chancellor's Lodge (Main Building, Charlet and Boys Quarter	2011	-	Extra Government Earnings and Other Charges	Ongoing

S/N	PROJECT	YEAR OF AWARD	DATE OF COMPLETION	SOURCE OF FUND	REMARK
61	Construction of Kitchen Cabinet in the Vice-Chancellor's Lodge (Main Building, Charlet and Boys Quarter	2011	-	Extra Government Earnings and Other Charges	Ongoing
62	Construction of Wardrobes in the Chancellor's Lodge (Main Building, Charlet and Boys Quarters	2011	-	Extra Government Earnings and Other Charges	Ongoing
63	Construction of Wardrobes in then Pro-Chancellor's Lodge (Main Building, Charlet and Boys Quarters	2011	-	Extra Government Earnings and Other Charges	Ongoing
64	Construction of Wardrobes in the Vice-Chancellor's Lodge(Main Building, Charlet and Boys Quarters	2011	-	Extra Government Earnings and Other Charges	Ongoing
65	Supply of LG Air-Conditioners	2011	-	Extra Government Earnings and Other Charges	Ongoing
66	Supply of Samsung Air-Conditioners	2011	-	Extra Government Earnings and Other Charges	Ongoing
67	Sub-Contract for the Structural Steel works for 2500 Capacity Auditorium Complex	2011	-	FGN CAPITAL 2011	Ongoing